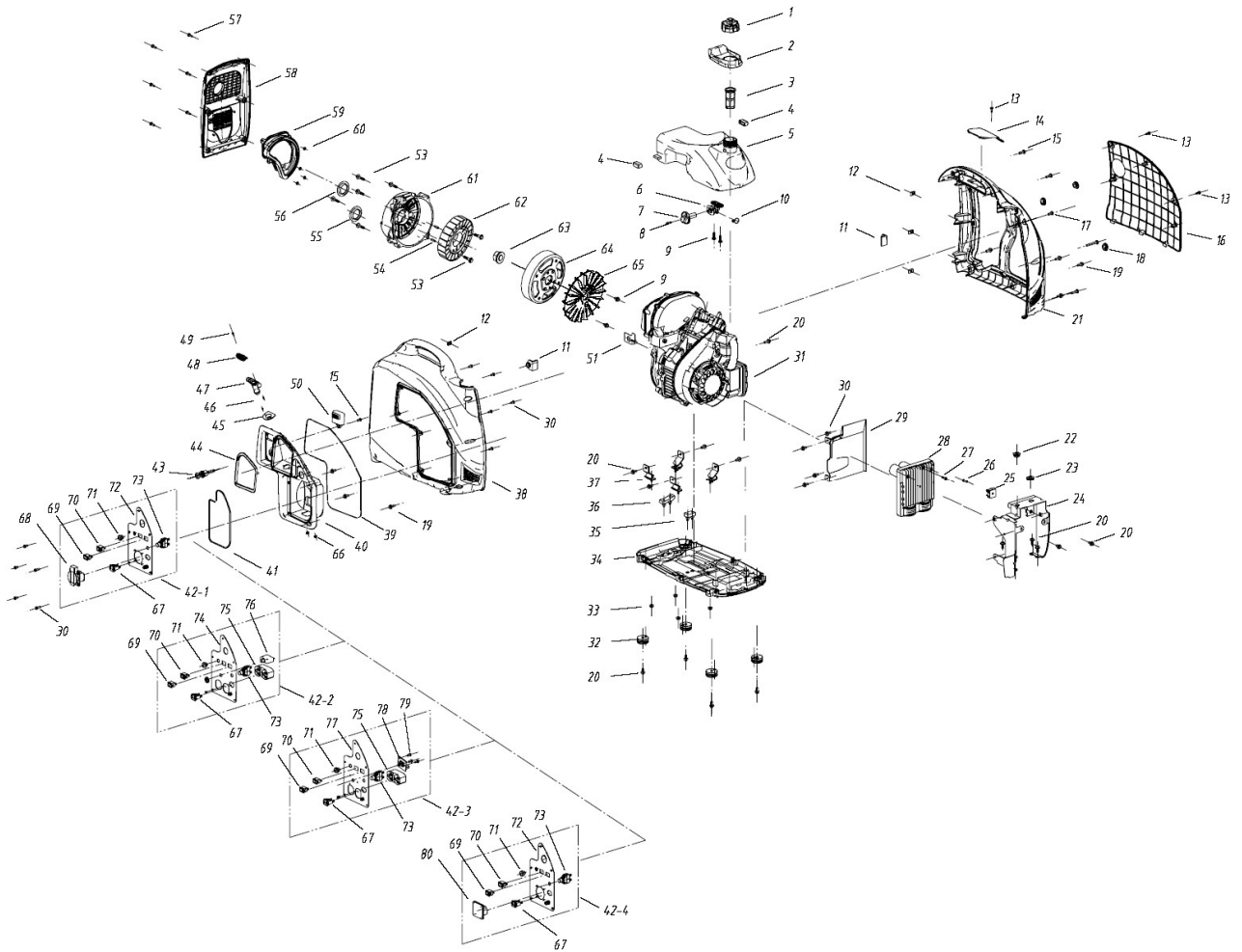
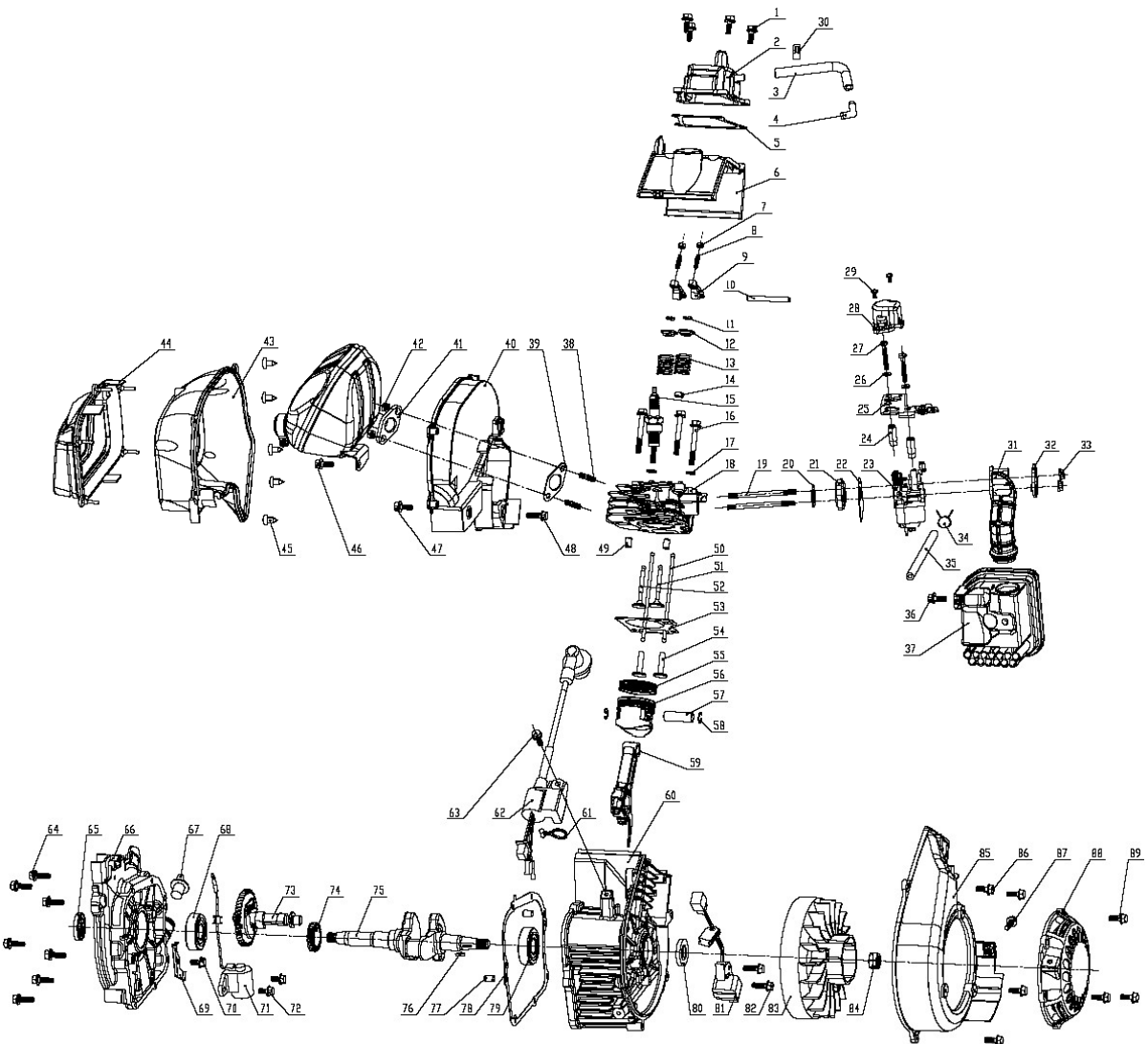


HS2000i 零部件分解图 COMPONENTS DECOMPOSITION MAP



序号 NO.	品号	图号 DRAWING NUMBER	名称 DESCRIPTION	数量 AMOUNT	序号 NO.	品号	图号 DRAWING NUMBER	名称 DESCRIPTION	数量 AMOUNT
1	40002684	HS10001.2.1.1	油箱盖组件 CAP COMP., FUEL FILLER	1	41	50006595	HS20001.4-1	电气安装盒O型胶圈 ELECTRICAL INSTALLATION BOX OF O TYPE RUBBER RING	1
2	40003149	HS20001.5-2	油箱导油胶套 TANK FUEL GUIDING RUBBER SLEEVE	1	42-1		HS20001.10	控制面板组件 CONTROL PANEL ASSEMBLY	1
3	40002685	HS10001.2.1.2	油位过滤器 FUEL FILTER	1	42-2		HS20001.10A	控制面板组件 CONTROL PANEL ASSEMBLY	1
4	50006613	HS20001.5-4	油箱固定胶套 TANK FIXED RUBBER SLEEVE	2	42-3		HSG20001.10	控制面板组件 CONTROL PANEL ASSEMBLY	1
5	40003659	HS20001.5-1	油箱 FUEL TANK	1	42-4		HS20001.10AU	控制面板组件 CONTROL PANEL ASSEMBLY	1
6	40003150	HS20001.5.1	油开关 FUEL SWITCH	1	43	60002183	HS20001.4.3	阻风门拉索总成 CHOKE CABLE ASSEMBLY	1
7	40003151	HS20001.5-3	油开关旋钮 FUEL SWITCH KNOB	1	44		HS20001.4-2	拉手装饰框 HANDLE DECORATIVE FRAME	1
8	50006182	GB/T9074.4	螺钉组合件 M4x16 SCREW ASSEMBLY M4x16	1	45		HS20001.4-4	拉手定位板 HANDLE POSITIONING PLATE	1
9	50006591	GB/T9074.4	螺钉组合件 M6x16 SCREW ASSEMBLY M6x16	4	46		GB/T12615	抽芯铆钉3X6 SELF-PLUGGING RIVET	2
10	60002609	149F.10-3A	油管卡 FUEL TUBE CLIP	1	47		HS20001.4.5-1	启动拉手 STARTING HANDLE	1
11	50006594	HS20001.4-3	发动机缓冲胶 ENGINE BUFFER FEET	2	48	40003170	HS20001.4.5-2	拉手盖板 HANDLE COVER	1
12	50005694	HS10001-7	簧片螺母 SPRING NUT	6	49	50006592	GB/T845	十字槽盘头自攻螺钉 ST2.9x9.5 CROSS RECESSED COUNTERSUNK HEAD TAPPING SCREWS ST2.9x9.5	1
13	50006175	GB/T837	螺钉M5x16 PHILLIPS SCREW M5X16	3	50	40003147	HS20001.4.4	指示灯组件 INDICATING LAMP ASSEMBLY	1
14	按颜色	HS20001.8-1	火花塞维护盖 MAINTENANCE SPARK PLUG COVER	1	51	50006617	HS20001.2-2	护线板 GUARD BOARD	1
15	50006172	GB/T9074.4	螺钉组合件 M5x16 SCREW ASSEMBLY M5x16	6					
16	按颜色	HS20001.7-1	空滤器维护盖 AIR FILTER COVER	1	53	50001616	GB/T5789	螺栓M6X30 BOLT M6X30	7
17	50005886	GB/T9074.4	螺钉组合件 M5x12 SCREW ASSEMBLY M5x12	1	54	50005835	149F.1-3	定位销 DOWEL	2
18	50006609	HS20001.6-1	空滤器维护盖安装胶套 AIR FILTER MAINTENANCE COVER MOUNTING RUBBER SLEEVE	3	55	50007098	HS20001.2-5	出线孔橡胶塞 THE OUTLET HOLE RUBBER STOPPER	1
19	50001598	GB/T5789	螺栓M6x12 BOLT M6x12	6	56	50006589	HS20001.2-3	橡胶塞 RUBBER STOPPER	1
20	50001739	GB/T5789	螺栓M6x12 BOLT M6x12	15	57	50006794	GB/T9074.4	螺钉组合件 M5x25 SCREW ASSEMBLY M5x25	6
21	按颜色	HS20001.6.1	右箱盖组件 RIGHT BOX COVER ASSEMBLY	1	58	40003155	HS20001.9.1	消音器盖 SILENCER COVER	1
22	40003164	HS20001.3.2-1	油箱支撑工字胶 FUEL TANK SUPPORTING H-SHAPED RUBBER	1	59	50006610	HS20001.9-1	电机导风胶套 MOTOR WIND GUIDING RUBBER SLEEVE	1
23	40003165	HS20001.3.2-2	油箱支撑椭圆胶 FUEL TANK SUPPORTING ELLIPSE GLUB	1	60	50005691	GB/T862	齿形垫圈 5 TOOTH GASKET 5	4
24	40003146	HS20001.3.2.1	逆变器支架 INVERTER BRACKET	1	61	70000313	149F.7-4	盖盒 ECONOMY COVER	1
25	40003050	HS10001.10.2	整流桥 RECTIFIER BRIDGE	1	62-1		HS20001.2.1.1	发电机定子(高电压) STATOR ASSEMBLY(HIGHT VOLTAGE)	1
26	50003941	GB/T9074.4	螺钉组合件 M5x20 SCREW ASSEMBLY M5x20	1	62-2		HS20001.2.1A.1	发电机定子(低电压) STATOR ASSEMBLY(LOW VOLTAGE)	1
27	50005887	GB/T9074.4	螺钉组合件 M4x12 SCREW ASSEMBLY M4x12	1	63	50001513	GB/T6177.2	螺母M12X1.25 NUT M12X1.25	1
28-1	40003282	HS20001.3.1	逆变器总成(230V50Hz) INVERTER(230V50Hz)	1	64		HS20001.2.1.2	发电机转子 ROTOR ASSEMBLY	1
28-2	40003295	HS20001.3.1A	逆变器总成(120V60Hz) INVERTER(120V60Hz)	1	65	40003163	HS20001.2-4	发电机叶轮 MOTOR FAN	1
28-3	40003561	HS20001.3.1B	逆变器总成(220V50Hz) INVERTER(220V50Hz)	1	66		GB/T95	平垫圈3 FLAT GASKET 3	2
28-4	40003660	HS20001.3.1AU	逆变器总成(240V50Hz) INVERTER(240V50Hz)	1	67	40003159	HS20001.10.3	直流插座 V TYPE DC SOCKET	1
28-5	40003145	HSG20001.3.1	逆变器总成(100V 50Hz/60Hz) INVERTER(100V 50Hz/60Hz)	1	68	40002862	HS10001.9.2	交流插座 AC SOCKET	1
29	40003166	HS20001.3-1	逆变器罩 INVERTER COVER	1	69	40003286	HS20001.10.2	熄火开关 FLAMEOUT SWITCH	1
30	50001487	GB/T818	螺钉M5X12 SCREW M5X12	13	70	60002147	HS10001.9.5	节能开关 ENERGY SAVING SWITCH	1
31		149F	发动机组 ENGINE	1	71	40003097	HS10001.9.4	保护切除开关 PROTECTION SWITCH REMOVAL	1
32	40002692	HS10001.3.5	整机脚胶 SUPPORT RUBBER	4	72	40003283	HS20001.10.1	电器安装板组件 CONTROL PANEL ASSEMBLY	1
33	50006586	GB/T6183.1	螺母M6 NUT M6	4	73	40003160	HS20001.10.4	直流过载保护器 DIRECT CURRENT OVERLOAD PROTECTOR	1
34	40003162	HS20001.1.1	底板 BASEPLATE	1	74	按颜色	HS20001.10.1A	电器安装板组件 CONTROL PANEL ASSEMBLY	1
35	50006587	HS20001.1-1	动力支撑胶垫 ENGINE SUPPORTING PAD	1	75	40003113	HSG10001.1.2	交流插座 AC SOCKET	1
36	50006588	HS20001.1-2	电机支撑胶垫 GENERATOR SUPPORTING PAD	1	76	40003302	HS20001.10.6	断路器 BREAKER	1
37	40003143	HS20001.1.2	减震座 SHOCK-ABSORBING SEAT	4	77	按颜色	HSG20001.10.1	电器安装板组件 CONTROL PANEL ASSEMBLY	1
38	按颜色	HS20001.4.1	左箱盖组件 LEFT BOX COVER ASSEMBLY	1	78	60002069	HSG10001.1.3	频率转换开关 FREQUENCY-CHANGEOVER SWITCH	1
39	50006984	HS20001.4-13	左箱盖O型胶圈 THE LEFT BOX COVER APRONS O	1	79	50005887	GB/T9074.4	螺钉组合件 M4x12 SCREW ASSEMBLY M4x12	3
40	按颜色	HS20001.4.2	电气安装盒 ELECTRICAL INSTALLATION BOX	1	80	40003655	HS10001.9.2AUS	交流插座 AC SOCKET	1

序号 NO.	图号 DRAWING NUMBER	名称 DESCRIPTION
31	149F	发动机组 ENGINE



This technical drawing is an exploded view of an engine assembly, showing various components and their relative positions. The parts are numbered from 1 to 89. The diagram includes the following components:

- 1-5:** Top cover and associated fasteners.
- 6-7:** Upper housing or intake manifold parts.
- 8-18:** Various internal components, including valves and pistons.
- 19-33:** Crankshaft and connecting rod assembly.
- 34-37:** Oil pump and related components.
- 38-48:** Lower housing and cooling fan parts.
- 49-58:** Piston and ring assembly.
- 59-63:** Camshaft and timing components.
- 64-72:** Various small parts and fasteners.
- 73-79:** Cooling fan and fan housing components.
- 80-89:** Final housing and fan assembly parts.

序号 NO.	图号 DRAWING NUMBER	名称 DESCRIPTION	数量 AMOUNT	序号 NO.	图号 DRAWING NUMBER	名称 DESCRIPTION	数量 AMOUNT
1	GB/T16674.1	螺栓M6x16 BOLT, FLANGE, M6x16	4	46	GB/T5789	螺栓M6x16 BOLT, FLANGE, M6x16	1
2	149F.2.2.1	缸盖罩组件 COVER COMP., HEAD	1	47	GB/T5789	螺栓M6x20 BOLT, FLANGE, M6x20	1
3	149F.2.2-1	通气管 TUBE, AIR CLEANER	1	48	GB/T5789	螺栓M6x20 BOLT, FLANGE, M6x20	1
4	149F.6-2	蒸汽弯管 STEAM PIPE	1	49	149F.1-3	定位销8x12 DOWEL 8x12	2
5	149F.2-2	缸盖罩垫 PACKING, HEAD COVER	1	50	149F.2-8	挺杆 ROD, PUSH	2
6	149F.2.2.2	缸盖罩护壳组件(尼龙6) CYLINDER HEAD COVER SHELL COMPONENT	1	51	149F.2.1-1	进气门 VALVE, IN.	1
7	149F.2.1-10	调整螺母 NUT, PIVOT ADJUSTING	2	52	149F.2.1-2	排气门 VALVE, EX.	1
8	149F.2.1-9	螺栓 BOLT, PIVOT	2	53	149F.2-1	气缸垫 GASKET, CYLINDER HEAD	1
9	149F.2.1-8	气门摇臂 ARM, VALVE ROCKER	2	54	149F.1-1	挺柱 LIFTER, VALVE	2
10	149F.2.1-7	摇臂转轴 SHAFT, ARM	1	55	149F.3.1.1	活塞环组合(理研) RING SET, PISTION	1
11	149F.2.1-5	气门卡锁(YAMAHA) LOCK, VALVE	2	56	149F.3.1-1	活塞(金皇) PISTION	1
12	149F.2.1-4	气门弹簧盘(YAMAHA) RETAINER, VALVE, SPRING	2	57	149F.3-1	活塞销 PIN, PISTION	1
13	149F.2.1-3	气门弹簧 SPRING, VALVE	2	58	149F.3-2	活塞销挡圈 NIP PIN, PISTION	2
14	149F.2.1-6	进气门油封 OIL SEAL, VALVE, IN.	1	59	149F.3.2	连杆组合(滚压) ROD CONNECTING COMP.	1
15	20A0670100	火花塞 PLUG, SPARK	1	60	149F.1.1A	机体组件(处理) BARREL ASS'Y, CYLINDER	1
16	GB/T5789	螺栓M6x50 BOLT, FLANGE, M6x50	4	61	149F.9.2-2	线夹 LINE CARD	1
17	GB/T97.1	平垫圈6 FLAT GASKET 6	2	62	149F.9.2	高压包组合 HIGHT VOLTAGE PACKAGE ASS'Y	1
18	149F.2.1.1	气缸盖组件 HEAD COMP., CYLINDER	1	63	GB/T5789	螺栓M6x20 BOLT, FLANGE, M6x20	1
19	149F.2.1-11	进气口双头螺栓 THE AIR INLET STUD	2	64	GB/T5789	螺栓M6x20 BOLT, FLANGE, M6x20	7
20	149F.2-4	进气口垫片 PACKING, INTAKE	1	65	149F.1-2	双唇油封20x35x5 OIL SEAL 20x35x5	1
21	149F.2-3	组合垫 SPACER COMP., CARBURETOR	1	66	149F.7-1A	侧盖(处理) SIDE COVER	1
22	149F.2-7	化油器出口垫片 PACKING, CARBURETOR	1	67	149F.7.1	油堵组合 OIL GAUGE ASS'Y	1
23	149F.10.1.1	化油器 CARBURETOR ASS'Y	1	68	6204/P5/GB276	轴承(人本集团) BEARING RADIAL BALL	1
24	149F.10.1-1	支撑套 SUPPORTING SLEEVE	2	69	149F.7-3	导线压板 WIRE PRESSING PLATE	1
25	149F.10.1.2	支撑板组件 SUPPORTING PLATE ASS'Y	1	70	GB/T5789	螺栓M6x12 BOLT, FLANGE, M6x12	1
26	GB/T97.1	平垫圈5 FLAT GASKET 5	2	71	149F.7.2	机油报警器组合 LUBE SENSOR	1
27	GB/T9074.3	螺钉组合件M5x35 SCREW ASSEMBLY M5x35	2	72	GB/T5789	螺栓M6x12 BOLT, FLANGE, M6x12	2
28	149F.10.2	步进电机组件 STEPPER MOTOR	1	73	149F.8	凸轮轴组件 CAMSHAFT ASS'Y	1
29	149F.10-1	螺钉M4x8 SCREW M4x8	2	74	149F.4.1-2	主动齿轮 DRIVE GEAR	1
30	AFG1100030	管夹 ELASTIC CLAMP	1	75	149F.4.1-1	曲轴 CRANKSHAFT	1
31	149F.6-1	进气管 AIR FILTER PIPE	1	76	149F.4.1-3	半圆键 KEY, WOODRUFF	1
32	149F.6-3	空滤器垫片 AIR FLTLER GASKET	1	77	149F.1-3	定位销8x12 DOWEL 8x12	2
33	GB/T6177.1	螺母M6 NUT M6	2	78	149F.7-2	侧盖垫片 GASKET COVER	1
34	149F.10-3A	油管卡(直径10) FUEL TUBE CLIP	1	79	6204/P5/GB276	轴承(人本集团) BEARING RADIAL BALL	1
35	149F.10-2	油管 TUBE, FUEL	1	80	149F.1-2	双唇油封20x35x5 OIL SEAL 20x35x5	1
36	GB/T5789	螺栓M6x20 BOLT, FLANGE, M6x20	1	81	149F.9.1	线圈组件 IGNITION ASS'Y	1
37	149F.6.1	空滤器组件(新) AIR CLEANER COMP.	1	82	GB/T5789	螺栓M6x20 BOLT, FLANGE, M6x20	2
38	149F.2.1-12	排气口双头螺栓 BOLT STUD, OUTTAKE	2	83	149F.4.2	飞轮组件 FLYWHEEL COMP.	1
39	149F.2-5	排气口垫片 EXHAUST GASKET	1	84	GB/T6171	螺母M12x1.25 NUT M12x1.25	1
40	149F.11.2.2	内护罩组合(尼龙6) INNER SHROUD COMBINATION	1	85	149F.5.2	导风罩组件 BLOWER HOUSING COMP.	1
41	149F.11.1	消声器组合 MUFFLER COMP.	1	86	GB/T5789	螺栓M6x16 BOLT, FLANGE, M6x16	4
42	GB/T6170	螺母M6 NUT M6	2	87	GB/T5789	螺栓M6x20 BOLT, FLANGE, M6x20	1
43	149F.11.2.1.1	外护罩组件(尼龙6) OUTER SHROUD ASS'Y	1	88	149F.5.1	启动轮组件 STARTER ASS'Y, RECOIL	1
44	149F.11.2.1-1	外护罩胶垫 OUTER COVER PAD	1	89	GB/T5789	螺栓M6x16 BOLT, FLANGE, M6x16	3
45	ST4.8x16/GB845-85	自攻螺钉 CROSS RECESSED COUNTERSUNK HEAD TAPPING SCREWS	5				