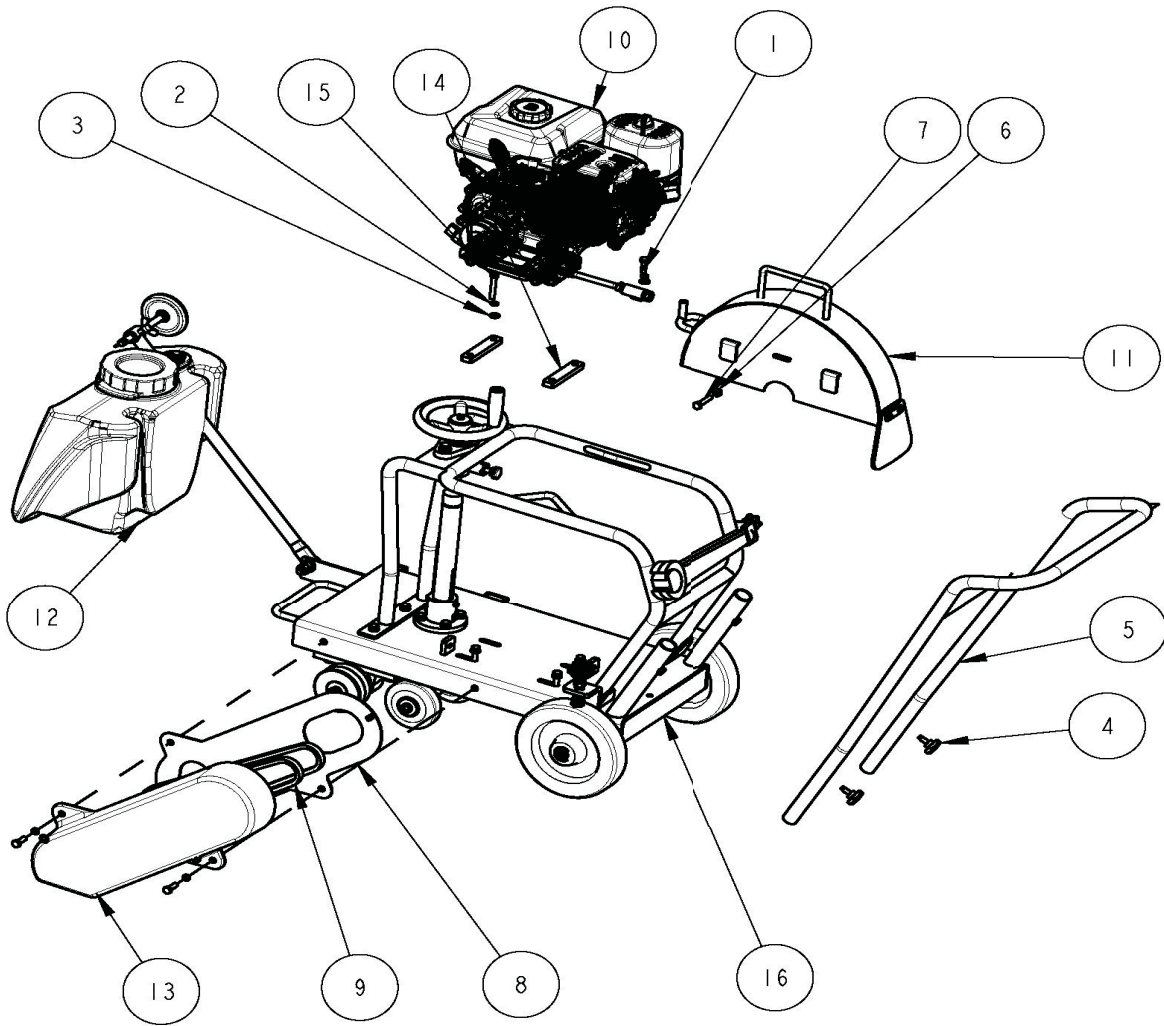


LQS350A 手扶式路面切缝机分解图/FLOOR SAW BOM

总体分解图/FLOOR SAW ASSEMBLY

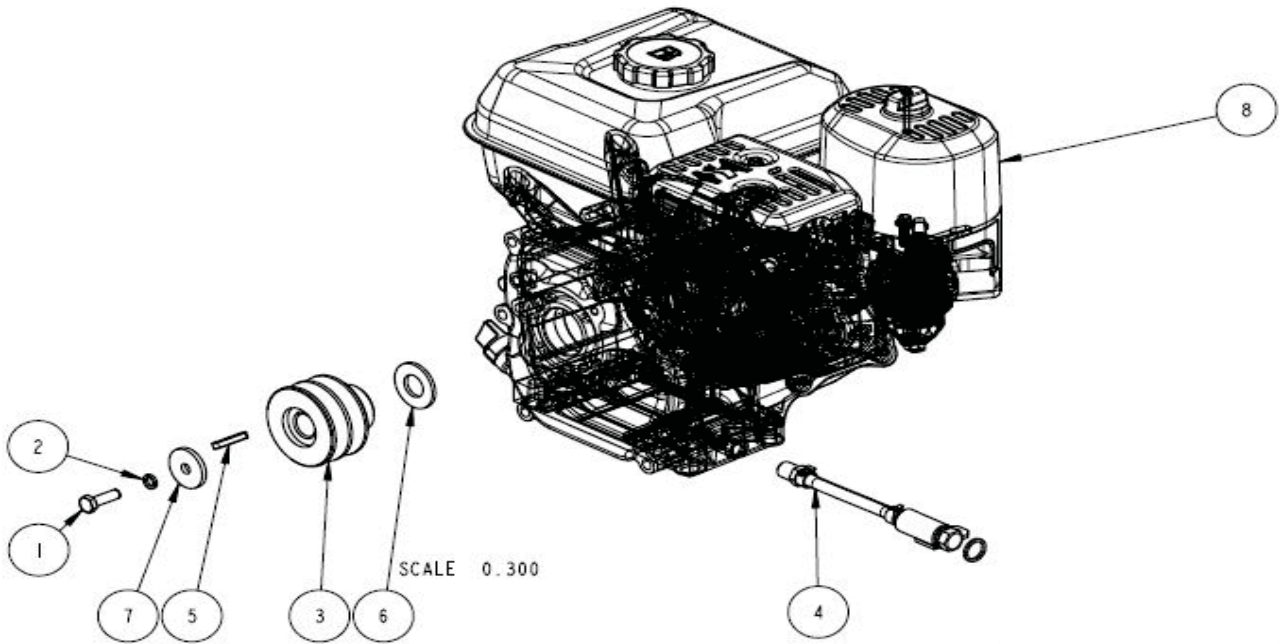


序号 NO.	规格 SPEC/SPECS	数量 QTY.	DESCRIPTION	名称	备注 REMARK
1	M8*25 GB5783	4	HEXAGON BOLT-M8*25 GB5783	螺栓-M8*25	
2	8 GBT93	7	SPRING WASHER-8 GBT93	垫圈8	
3	8 GBT97.1	7	FLAT WASHER-d8 GBT97.1	垫圈8	
4	LQS350.8	2	KNOB BOLT M10	锁紧手柄铸合	
5	LQS350A.1	1	HANDLE	操纵手把焊合	
6	M8*30 GB5783	1	HEXAGON BOLT-M8*30 GB5783	螺栓-M8*30 GB5783	
7	M8 GB6170	1	HEXAGON NUT-M8 GB6170	螺母-M8 GB6170	
8	LQS350A.7	1	BELT INSIDE COVER	带轮内护罩	
9	LQS350A-11	2	BELT XPA882 (RED)	V带 XPA882 (红标)	GATES
10		1	ENGINE ASSEMBLY	发动机装配组件	发动机装配 ENGINE ASSEMBLY
11	LQS350A.5	1	BLADE COVER ASSEMBLY	刀片护罩组件	刀片护罩组合 BLADE COVER ASSEMBLY
12	LQS350A.9	1	WATER TANK ASSEMBLY	水箱组件	水箱组合 WATER TANK ASSEMBLY
13	LQS350A-12	1	BELT OUTSIDE COVER	带轮外护罩	
14	LQS350A-16	2	ENGINE LOCKING PLATE	汽油机安装板	
15	M8*45 GB5783	4	HEXAGON BOLT-M8*45 GB5783	螺栓-M8*45	
16		1	WATER TANK FRAME ASSY.	水箱支架组件	水箱支架组合 WATER TANK FRAME ASSEMBLY

LQS350A 手扶式路面切缝机分解图/FLOOR SAW BOM

发动机装配/ENGINE ASSEMBLY

返回-总体分解图
FLOOR SAW ASSEMBLY

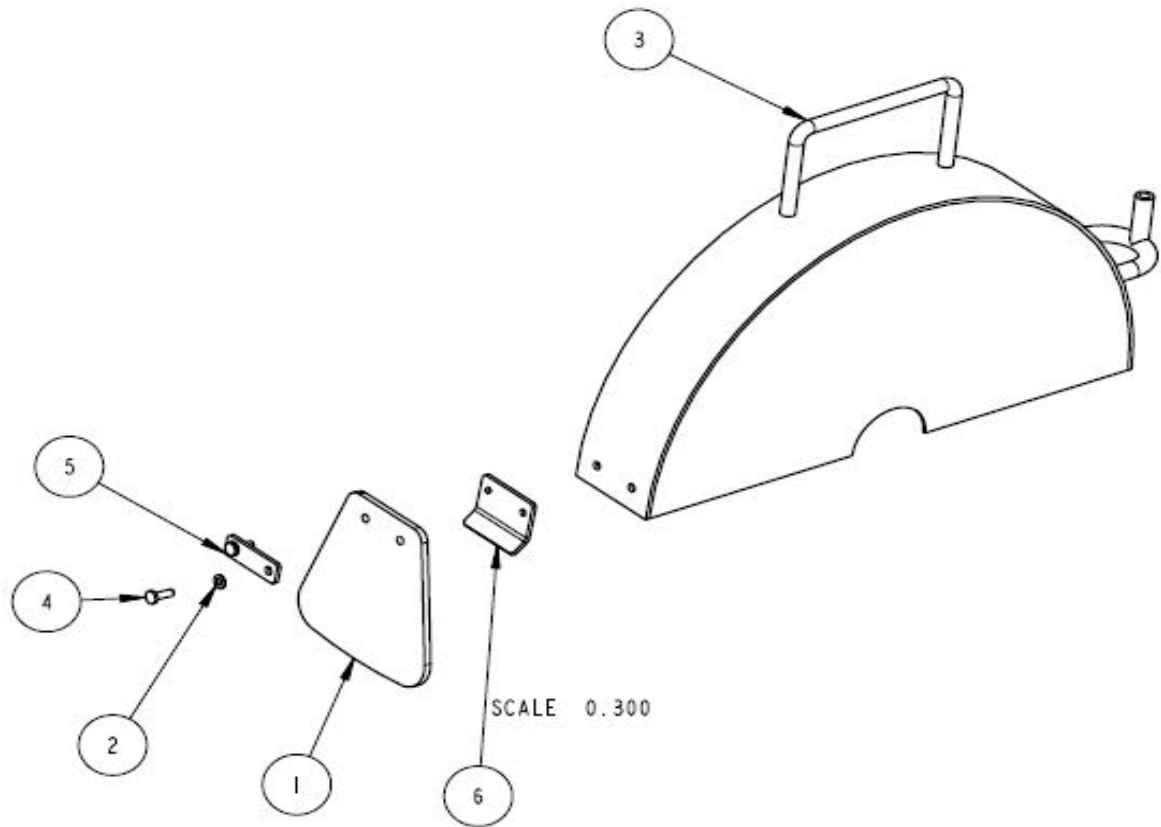


序号 NO.	规格 SPEC/SPECS	数量 QTY.	DESCRIPTION	名称	备注 REMARK
1	M8*30 GB5783	1	HEXAGON BOLT-M8*30 GB5783	螺栓-M8*30	
2	8 GBT93	1	SPRING WASHER-8 GBT93	垫圈8	
3	LQS350A-3	1	ENGINE PULLEY	小带轮	
4	LQS350A.13	1	EXHAUST OIL ASSEMBLY	放机油管组合	放机油管组合 EXHAUST OIL ASSEMBLY
5		1	KEY-5*32 GBT1095	平键-5*32 GBT1095	
6	LQS350A-17	1	FLAT WASHER-d20*D40*3	小带轮垫板	d20*D40*3
7	LQS350A-19	1	FLAT WASHER-d9*D35*4	小带轮压板	d9*D35*4
8	1062/163CC-S轴(公制)	1	ENGINE	汽油机	

LQS350A 手扶式路面切缝机分解图/FLOOR SAW BOM

刀片护罩组合/BLADE COVER ASSEMBLY

[返回-总体分解图](#)
FLOOR SAW ASSEMBLY

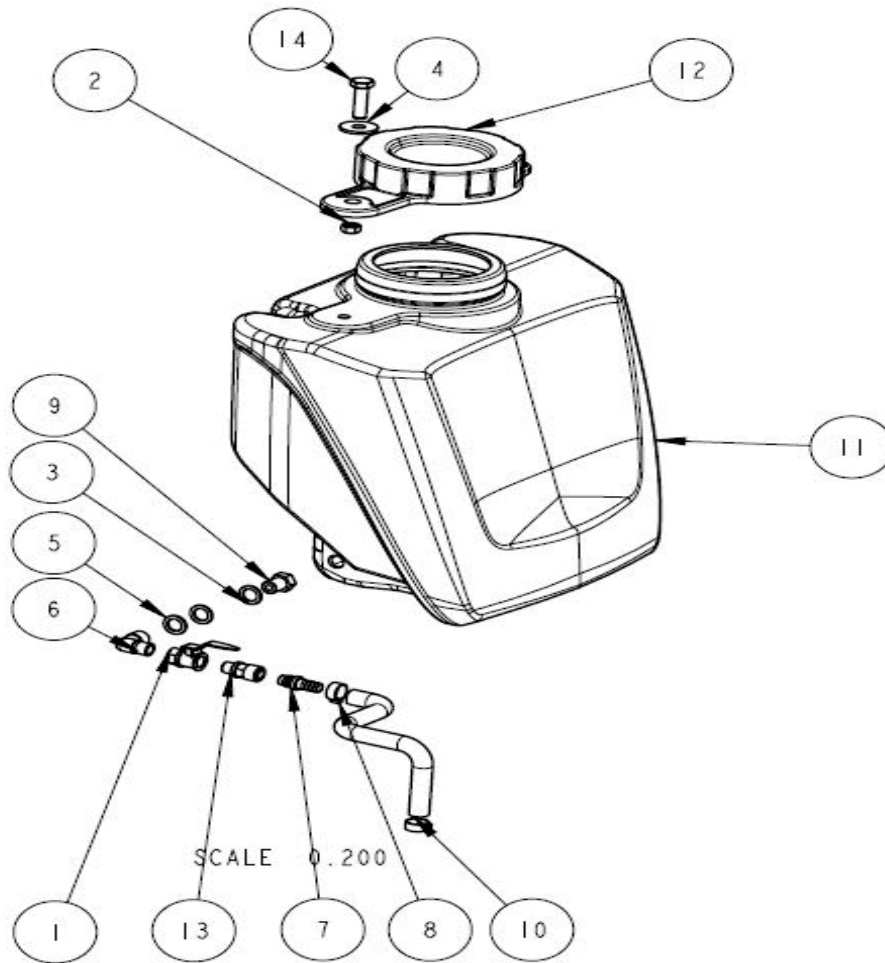


序号 NO.	规格 SPEC/SPECS	数量 QTY.	DESCRIPTION	名称	备注 REMARK
1	LQS350. 16-3	1	RUBBER FENDER	挡泥板	
2	5 GBT97.1	2	FLAT WASHER 5	垫圈5	
3	LQS350A. 5. 1	1	BLADE COVER ASSEMBLY	刀片护罩焊合	
4	M5*14 GBT818	2	SLOTTED PAN HEAD SCREW-M5*14 GBT818	螺钉M5*14	
5	LQS350. 16-1	1	OUTSIDE RUBBER PLATE	外压板	
6	LQS350. 16-2	1	INSIDE RUBBER PLATE	内压板	

LQS350A 手扶式路面切缝机分解图/FLOOR SAW BOM

水箱组合/WATER TANK ASSEMBLY

[返回-总体分解图](#)
[FLOOR SAW ASSEMBLY](#)

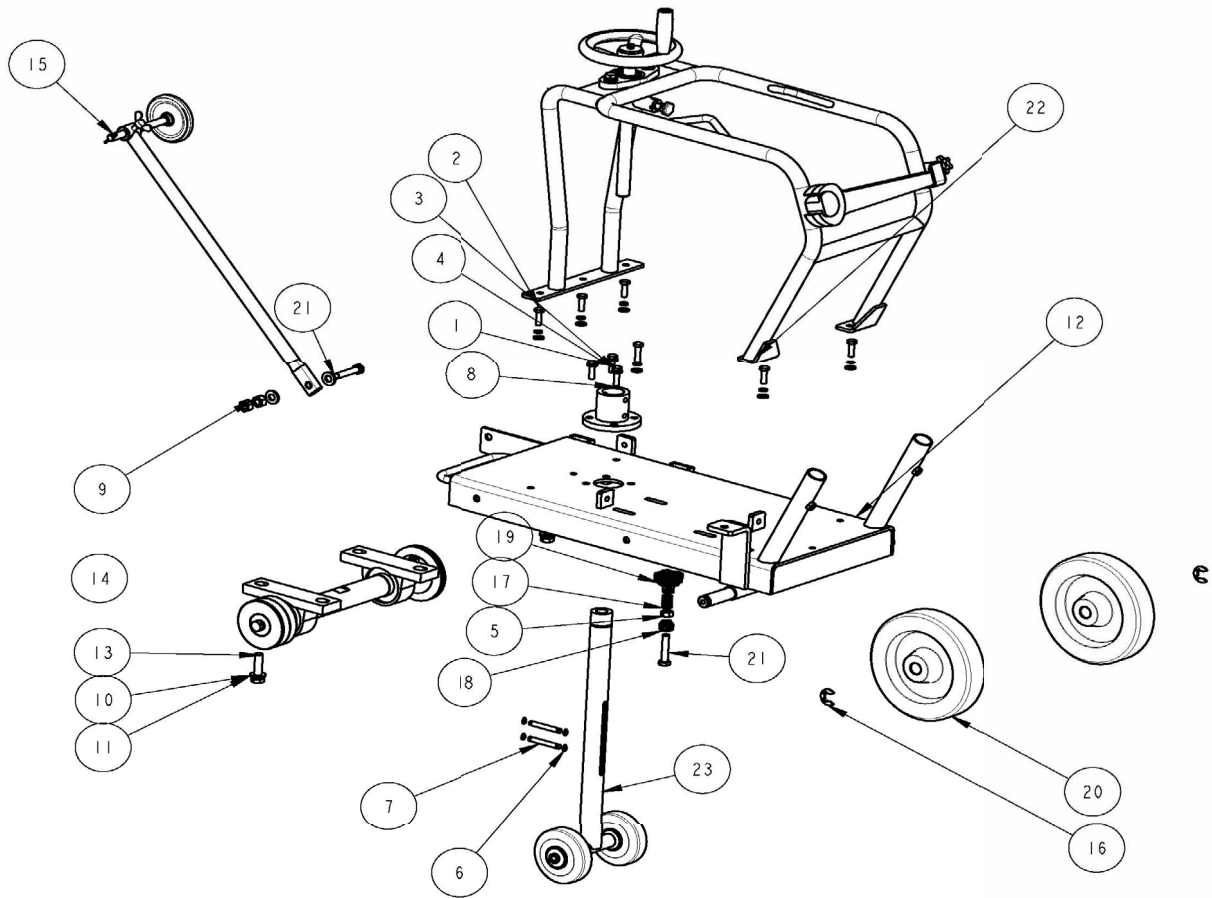


序号 NO.	规格 SPEC/SPECS	数量 QTY.	DESCRIPTION	名称	备注 REMARK
1	GX5071	1	brass ball valve PT1/4	球阀	
2	M8 GB889.1	1	HEXAGON NUT-M8 GB889.1	螺母M8 GB889.1	
3	3WP-300G.14-39	2	asbestos washer-d13.5	喷杆螺帽密封垫	
4	GB/T96 \varnothing 8	1	big flat washer-D10 GB9074 25	垫圈	
5	LQS350A.9-4	1	flat washer-d13.5*D20*2	水管垫片	
6	LQS350A.9-3	1	Ltype pipe joint-PT1/4(in) PT1/4(out)	直角弯头	
7	1/4G	1	quick connector-female joint-PH 21 FE	快速止水母接头	
8	(13~ 19)	2	spring clamp	喉箍 (13~ 19)	
9	LQS350A.9-1	1	T type pipe joint-PT1/4	通孔螺栓	
10	ϕ 16* ϕ 11	1	water hose	黑色耐油橡胶管	
11	LQS350A.9-2	1	WATER TANK	水箱14L	
12	LQS500A.11-2	1	WATER TANK COVER	水箱盖	
13	1/4G	1	quick connector-male joint-YSM 22 FE	快速公接头	
14	M8*30 GB5783	1	HEXAGON BOLT-M8*30 GB5783	螺栓-M8*30	

LQS350A 手扶式路面切缝机分解图/FLOOR SAW BOM

水箱支架组合/WATER TANK FRAME ASSEMBLY

[返回-总体分解图/FLOOR SAW ASSEMBLY](#)

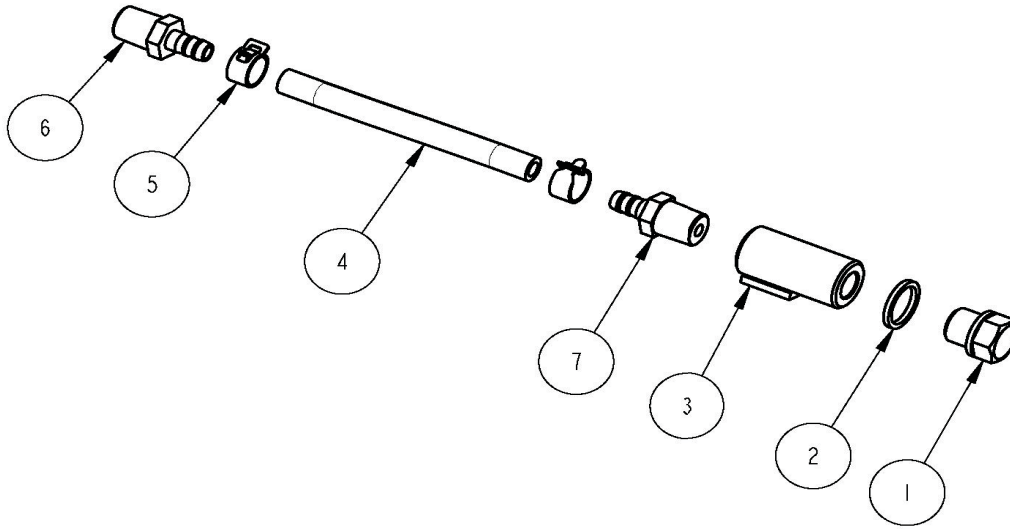


序号 NO.	规格 SPEC/SPECS	数量 QTY.	DESCRIPTION	名称	备注 REMARK
1	M8*30 GB5783	4	HEXAGON BOLT-M8*30 GB5783	螺栓-M8*30	
2	M8*25 GB5783	5	HEXAGON BOLT-M8*25 GB5783	螺栓-M8*25	
3	8 GBT93	9	SPRING WASHER-8 GBT93	垫圈8	
4	8 GBT97.1	9	FLAT WASHER-d8 GBT97.1	垫圈8	
5	M10 GB6170	1	HEXAGON NUT-M10 GB6170	螺母-M10	
6	6 GBT896	4	CILIPS FOR SHAFT-6 GBT896	开口挡圈6	
7	LQS350A-14	2	PIN-d8	限位销	
8	LQS350A-13	1	GUIDE PLATE	导向套	
9	M10 GB6170	2	HEXAGON NUT-M10 GB6170	螺母-M10	
10	12 GBT93	4	SPRING WASHER-12 GBT93	垫圈12	
11	HZR96-4	4	FLAT WASHER	垫圈一	
12	LQS350A.6	1	ENGINE BASE PLATE	底座焊合	
13	M12*45 GB5783	4	HEXAGON BOLT-M12*45 GB5783	螺栓-M12*45	
14	LQS350A	1	BLADE SHAFT ASSEMBLY	刀片轴组件	刀片轴组合 BLADE SHAFT ASSEMBLY
15	LQS350A.4	1	GUIDE ROD ASSEMBLY	导向杆组件	导向杆组合 GUIDE ROD ASSEMBLY
16	GB/T896	2	E TYPE CLIP-GBT896 15	开口挡圈15	
17	LQS350.10-1	1	RETURN SPRING-d12 L20 pitch3	止动弹簧	
18	LQS350.10-2	1	RUBBER COVER	橡胶套	
19	LQS350A.10.1	1	KNOB BOLT M10	止动手柄铸合	
20	LQS350A.8	2	REAR WHEEL-D190	后轮铸合	
21	M10*50 GB5783	2	HEXAGON BOLT-M10*35 GB5783	螺栓-M10*50	
22	LQS350A	1	TANK GUARD ASSEMBLY	水箱支架焊合	水箱支架组合 TANK GUARD ASSEMBLY
23	LQS350A.3	1	CONECTING ROD ASSEMBLY	升降杆焊合	连接杆组合 CONECTING ROD ASSEMBLY

LQS350A 手扶式路面切缝机分解图/FLOOR SAW BOM

放机油组合/EXHAUST OIL ASSEMBLY

[返回-发动机装配](#)
[ENGINE ASSEMBLY](#)

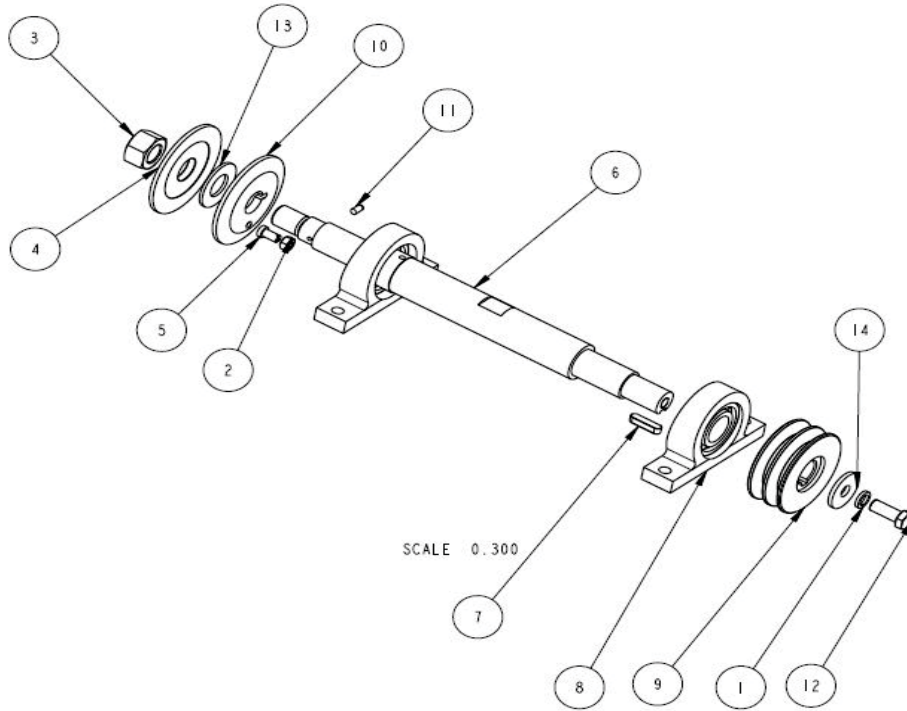


序号 NO.	规格 SPEC/SPECS	数量 QTY.	DESCRIPTION	名称	备注 REMARK
1	LQS350.13-3	1	HEXAGON HEAD PLUG-M14*1.5	油堵	M14*1.5
2	LQS350.13-2	2	SEALING GASKET 14	油堵垫圈	
3	LQS350.13.1	1	NOZZLE	机油管焊合	
4	GB/T15329	1	OIL HOSE-d14*3-95	织物液压软管2-10	d14*3-95
5	(13~ 19)	2	SPRING CLAMP	喉箍 (13~ 19)	
6	LQS350A-29	1	TAPER JOINT	螺嘴	
7	LQS350.13-1	1	TAPER JOINT	螺嘴	

LQS350A 手扶式路面切缝机分解图/FLOOR SAW BOM

刀轴组合/BLADE SHAFT ASSEMBLY

[返回-水箱支架组合](#)
[WATER TANK FRAME ASSEMBLY](#)

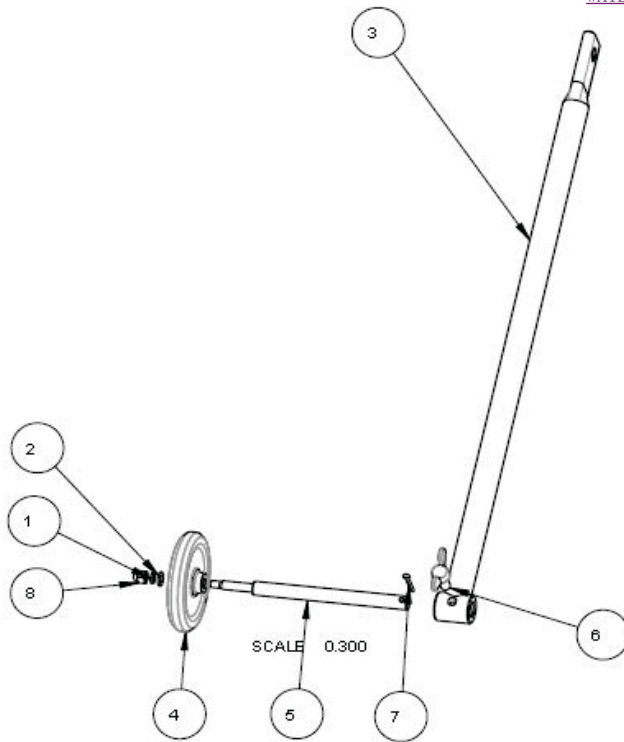


序号 NO.	规格 SPEC/SPECS	数量 QTY.	DESCRIPTION	名称	备注 REMARK
1	10 GBT93	1	SPRING WASHER-10 GBT93	垫圈10 GBT93	
2	M8 GB6170	1	HEXAGON NUT-M8 GB6170	螺母-M8 GB6170	
3	LQS350A-6	1	HEXAGON NUT LEFT-M22 L	螺母(左旋)-M22 L	
4	LQS350A-10	1	INSIDE BLADE FLANGE	刀片夹紧板	
5	LQS350A-8	1	BLADE COCATION BOLT	刀片定位销	
6	LQS350A-7	1	SHAFT	传动轴	
7	C8*28 GB1096	1	KEY-8*28 GB1095	键-C8*28 GB1096	
8	UCP206-GBT7810	2	BEARING UCP206-GBT7810	轴承 UCP206	
9	LQS350A-5	1	BELT PULLEY	大带轮	
10	LQS350A-9	1	OUTSIDE BLADE FLANGE	刀片安装板	
11	GB/T119.1 6h8*12	1	PIN-6*12	销-6*12	
12	M10*25 GB5783	1	HEXAGON BOLT-M10*25 GB5783	螺栓-M10*25	
13	LQS350A-2	1	BLADE WASHER D25.4-D50	刀片垫板	
14	LQS350A-4	1	BLADE SHAFT WASHER-D13*d40*4	大带轮压板	D13*d40*4

LQS350A 手扶式路面切缝机分解图/FLOOR SAW BOM

导向杆组合/GUIDE ROD ASSEMBLY

[返回-水箱支架组合](#)
[WATER TANK FRAME ASSEMBLY](#)

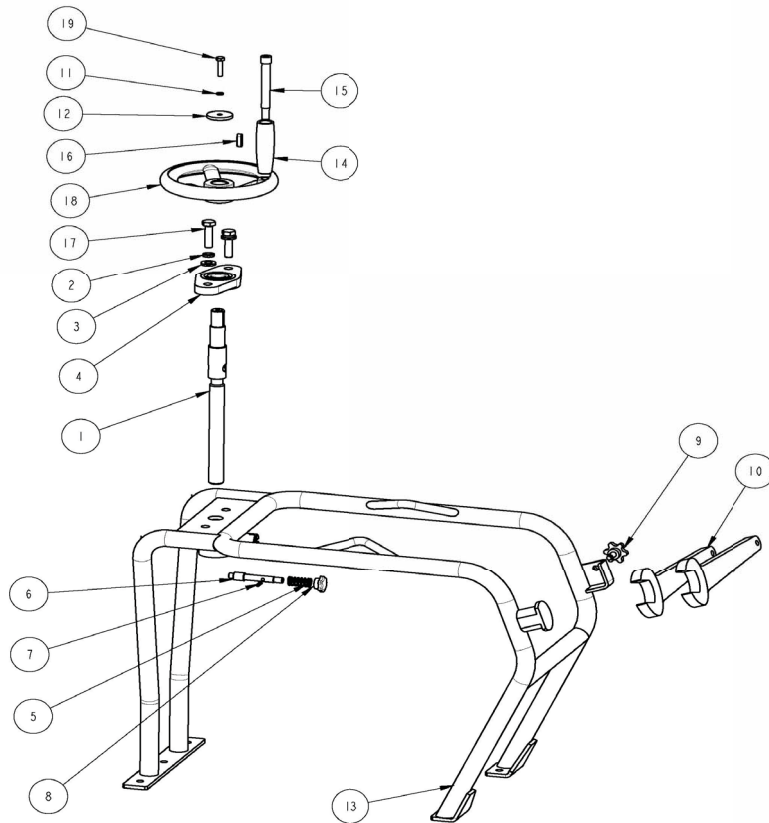


序号 NO.	规格 SPEC/SPECS	数量 QTY.	DESCRIPTION	名称	备注 REMARK
1	M6 GB6170	1	HEXAGON NUT-M6 GB6170	螺母-M6	
2	6 GBT96	1	FLAT WASHER-6 GBT96	垫圈6	
3	LQS350A. 4. 1	1	GUIDE ROD	导向杆焊合	
4	LQS350. 1-1	1	GUIDE WHEEL	导向轮	
5	LQS350. 1-2	1	GUIDE WHEEL SHAFT	导轮轴	
6	LQS350. 1. 2	1	WING NUT-M8*20 GBT62	蝶型螺钉	
7	GB91 3. 2*20	1	SPLIT PIN-3. 2*20 GBT91	开口销-3. 2*20	
8	M6 GBT923	1	ACORN NUT-M6 GBT923	盖形螺母M6	

LQS350A 手扶式路面切缝机分解图/FLOOR SAW BOM

水箱支架组合/TANK GUARD ASSEMBLY

返回-水箱支架组合
WATER TANK FRAME ASSEMBLY

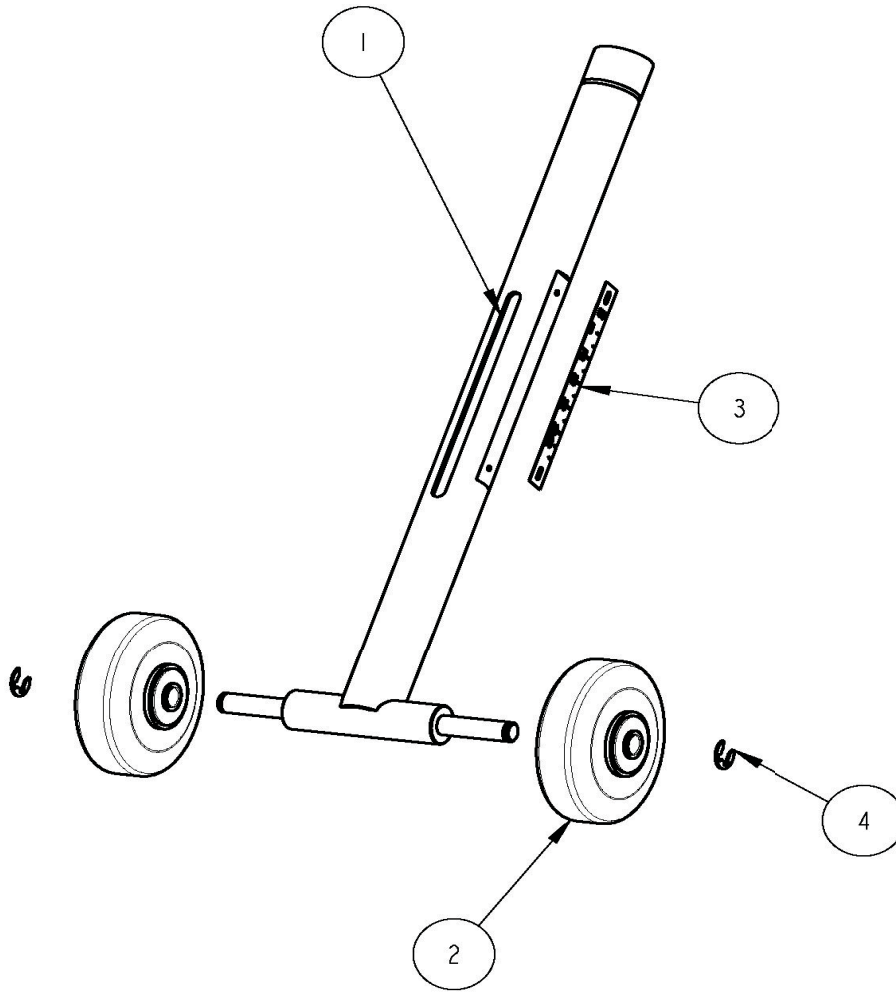


序号 NO.	规格 SPEC/SPECS	数量 QTY.	DESCRIPTION	名称	备注 REMARK
1	LQS350A-1	1	THREADED ROD	螺纹杆	
2	10 GBT93	3	SPRING WASHER-10 GBT93	垫圈10	
3	10 GBT97.1	3	FLAT WASHER-d10 GBT97.1	垫圈10	
4	GB/T7810 UCFLU204	1	BEARING UCFLU204-GB7810	轴承UCFLU204	
5	65Mn (BS)/LQS350A. 2. 4	1	SPRING-d12 pitch4.8	止动弹簧	
6	LQS350A. 2. 4-3	1	PIN	调节杆	
7	LQS350A. 2. 4-3	1	SPRING TYPE STRAIGHT PIN-d4 GB879. 1	弹性圆柱销-4*26	
8	LQS350A. 10. 1	1	KNOB BOLT M10	止动手柄铸合	
9	LQS350. 8	1	KNOB BOLT M8	锁紧手柄铸合	
10	S34	2	SPANNER-34	呆头扳手-34	
11	6 GBT93	1	SPRING WASHER-6 GBT93	垫圈6	
12	LQS500-24	1	FLAT WASHER	大手轮压板	
13	LQS350A. 2	1	TANK GUARD	支架焊合	
14		1	RETURN HANDLE	手柄套	
15	JB/T7270. 4 M10*80	1	RETURN HANDLE BOLT	手柄螺栓	
16	GB/T1096 B6×20	1	KEY	键	
17	M10*40 GB5783	2	HEXAGON BOLT-M10*40 GB5783	螺栓-M10*40	
18	JB/T7273. 3 B18×160	1	HANDLEWHEEL	塑料手轮	
19	M6*16 GB5783	1	HEXAGON BOLT	螺栓-M6*16	

LQS350A 手扶式路面切缝机分解图/FLOOR SAW BOM

连接杆组合/CONNECTING ROD ASSEMBLY

[返回-水箱支架组合](#)
[WATER TANK FRAME ASSEMBLY](#)



序号 NO.	规格 SPEC/SPECS	数量 QTY.	DESCRIPTION	名称	备注 REMARK
1	LQS350A.3	1	BLADE LIFTING ROD	升降杆焊合	
2	LQS350.14.3	2	FRONT WHEEL	前轮	D100
3	LQS350A-15	1	CUTTING DEPTH LABEL	深度指示牌	
4	GB/T896	2	E TYPE CLIP-E15	开口挡圈9	