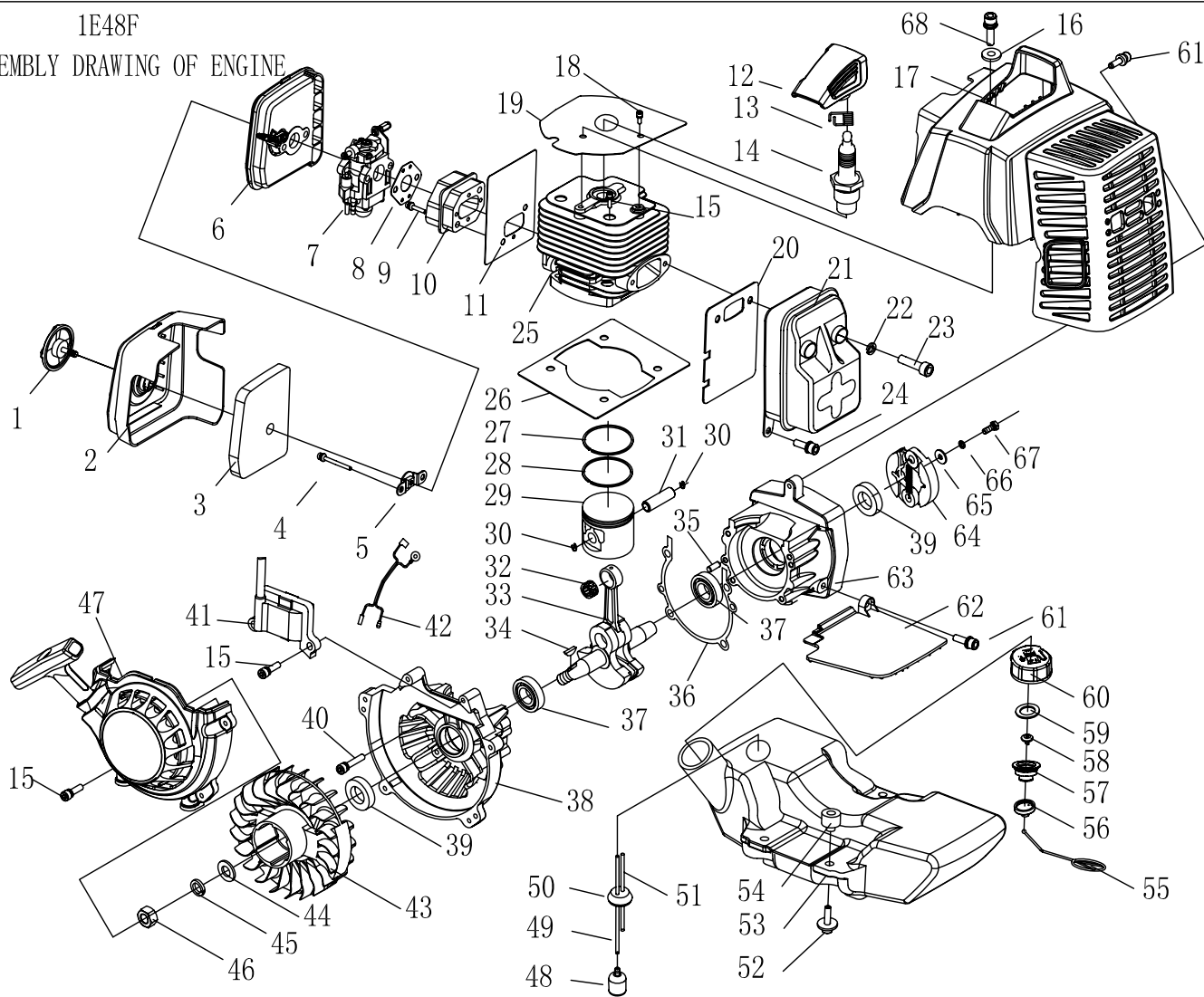


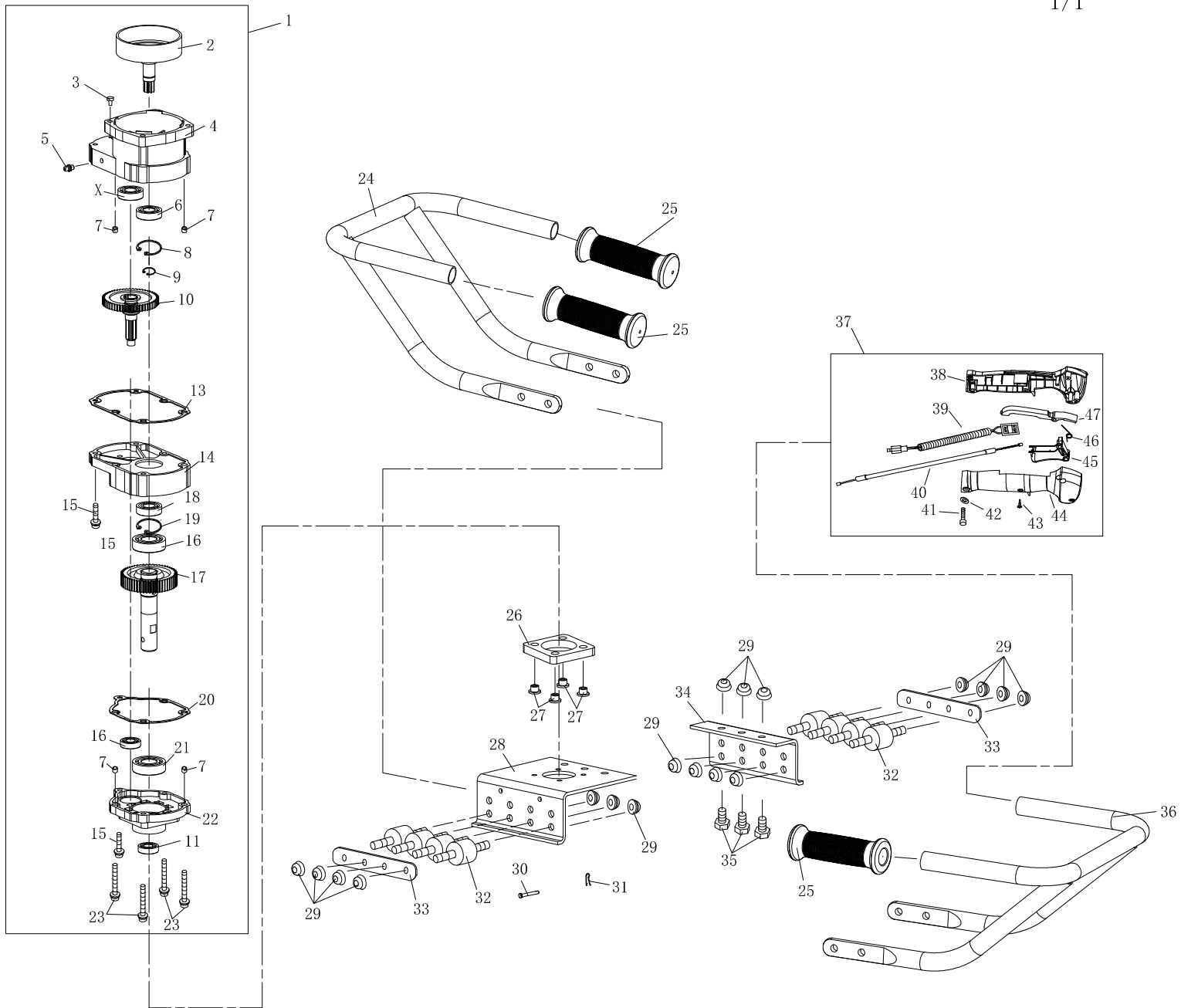
1E48F
ASSEMBLY DRAWING OF ENGINE



NO.	PART NO.	PART NAME	QTY.	NO.	PART NO.	PART NAME	QTY.	NO.	PART NO.	PART NAME	QTY.
1	1E48F. 1. 2	Screw	1	29	1E48FP. 5-5	PISTON	1	57	1E32FL. 6. 2-2	Inside Cover	1
2	1E48F. 1-1	Cleaner Outside Cover	1	30	1E40F-03. 02. 01	RING	1	58	EB-415. 4. 1. 1-1	Inlet	1
3	1E48F. 1-2	Filter Net	1	31	1E48FP. 5-2	PISTON PIN	1	59	CG420. 1. 3. 1-2	Gasket	1
4	GB70. 1+GB93+GB97	Screw M5 × 50	2	32	1E44F-2A. 2-3	Bearing	1	60	1E32FL. 6. 2-1	Fuel Tank Lid	1
5	GMF-30. 1-13	Baffle (thickness 1.5mm)	1	33	1E48F. 7. 1	Crank Shaft Ass'y	2	61	GB70. 1+GB93+GB97	Screw M5 × 16	2
6	1E48F. 1. 1	Cleaner inside cover	1	34	GB1099	KEY 3 × 13	1	62	1E48F-2	Clapboard	1
7	1E48F. 2Z	Carburetor	1	35	GB119	Pin 4h8 × 10	2	63	1E48F. 8-1	Crank Case	1
8	1E48FP-3	Gasket	1	36	1E48FP. 6-2	Gasket	1	64	1E48F-E. 5	Clutch	1
9	GB70. 1+GB93+GB97	Screw M5 × 30	2	37	GB/T276	Bearing 6202/P6	2	65	GB/T96	Washer 6	1
10	1E48FP-5	Admitting Pipe	1	38	1E48F. 8-2	Crank Case	1	66	GB/T93	Washer 6	1
11	1E48F-5	Gasket	1	39	1E40FP-3Z-11	Seal	2	67	1E40F-6-4	Bolt	1
12	1E48F. 5. 1-1A	Cap	1	40	GB70. 1+GB93+GB97	Screw M5 × 30	4	68	GB70. 1	Screw M5 × 16	1
13	1E34FL-3E. 6-1	Spring	1	41	1E48F. 5. 1. 2A	Coil	1	69			
14	L8RTC	Plug	1	42	3WT-300. 7	Cord Comp.	1	70			
15	GB70. 1+GB93+GB97	Screw M5 × 20	10	43	1E48F. 5. 1. 1	Fly Wheel	1	71			
16	1E33F-4	Gasket	1	44	GB/T97	Washer 10	1	72			
17	1E48F. 3(1E48F. 3A)	Guide Cover Ass'y	1	45	GB/T93	Washer 10	1	73			
18	GB70. 1+GB96	Screw M5 × 12	1	46	GB/T6171	Nut M10 × 1. 25	1	74			
19	1E48F-1	Clapboard	2	47	1E48F. 6	Starter	1	75			
20	1E48F-E-5	Gasket	1	48	P40. 12. 2-3A	Filter	1	76			
21	1E48F. 4(1E48F. 4A)	Muffler	1	49	CG420. 4. 2-2	Fuel pipe 3 × 1. 25 × 260	1	77			
22	GB/T859	Washer 8	2	50	EB-415. 4. 2-2	Plug	1	78			
23	GB/T70. 1	Screw M8 × 30-10. 9	2	51	EB-415. 4. 2-4	Fuel pipe 3 × 1 × 90	1	79			
24	GB70. 1+GB93+GB97	Screw M5 × 12	1	52	GB70. 1+GB93+GB96	Screw M5 × 25	1	80			
25	1E48F-4	Cylinder	1	53	1E48F. 9. 1	Fuel Tank	1	81			
26	1E48FP-10	Gasket	1	54	139F-2-12	Gasket	1				
27	1E48FP. 5-3	Piston Ring	1	55	HB33. 2. 2. 1	Chain	1				
28	1E48FP. 5-4	Piston Ring	1	56	1E32FL. 6. 2-3	Cover	1				

The Parts List of Model 3WT-300B Earth Auger 80310996

1/1



NO.	PART NO.	PART NAME	QTY.	NO.	PART NO.	PART NAME	QTY.	NO.	PART NO.	PART NAME	QTY.
1	3WT-300.1	Gear Box	1	22	3WT-300.1-3	Case Cover	1	43	GB/T845	Screw ST3.5 × 13	4
2	3WT-300.1.1	Clutch Drum Comp.	1	23	GB/T70.1+GB/T93+GB/T97.1	Screw M6 × 55	4	44	BC36.3-1	Box, Right	1
3	M5	Vent-plug	1	24	3WT-300.3.1A	Handle	1	45	BC36.3-6	Handgrip	1
4	3WT-300.1-1	Wheel Box	1	25	3WT-300.2-1A	Rubber Ringer	3	46	BC36.3-5	Spring	1
5	GB/T1152	Fuel Cup M6	1	26	3WT-300-1	Rubber Washer	1	47	BC36.3-3	Handgrip	1
6	GB/T276	Bearing 6002-2RS/P5	3	27	3WT-300-2	Spacer	4				
7	6MF-30.1-14	Bushing	4	28	3WT-300-4C	Brace I	1				
8	GB/T893.1	Stop ring 32	1	29	GB/6183.1	Nut M8	19				
9	GB/T894.1	Stop ring 15	1	30	3WT-300-3A	Shaft	1				
10	3WT-300.1-5	Gear	1	31	3WE-2.6A-2	Pin	1				
11				32	3WT-300.9	Rubber pole	8				
12	3WT-300.1-6	Gear Shaft	1	33	3WT-300-7	Cushion	2				
13	3WT-300.1-9	Gasket	1	34	3WT-300-6C	Brace II	1				
14	3WT-300.1-2	Wheel Box	1	35	GB/T5783	Screw M8 × 20	3				
15	GB/T70.1+GB/T93+GB/T97.1	Screw M6 × 30	3	36	3WT-300.2.1A	Handle	1				
16	GB/T276	Bearing 6004-2RS/P5	2	37	3WT-300.2.2	Lever Ass'y	1				
17	3WT-300.1-7	Gear	1	38	BC36.3.3	Box, Left	1				
18				39	3WT-300.2.2.1	Stop Button Comp.	1				
19	3WT-300.1-8	Shaft	1	40	3WT-300.2.2.2	Cable Comp.	1				
20	3WT-300.1-10	Gasket	1	41	GB/T818	Screw M5 × 30	1				
21	GB/T276	Bearing 6000-2RS/P5	1	42	GB/T848	Washer 5	1				