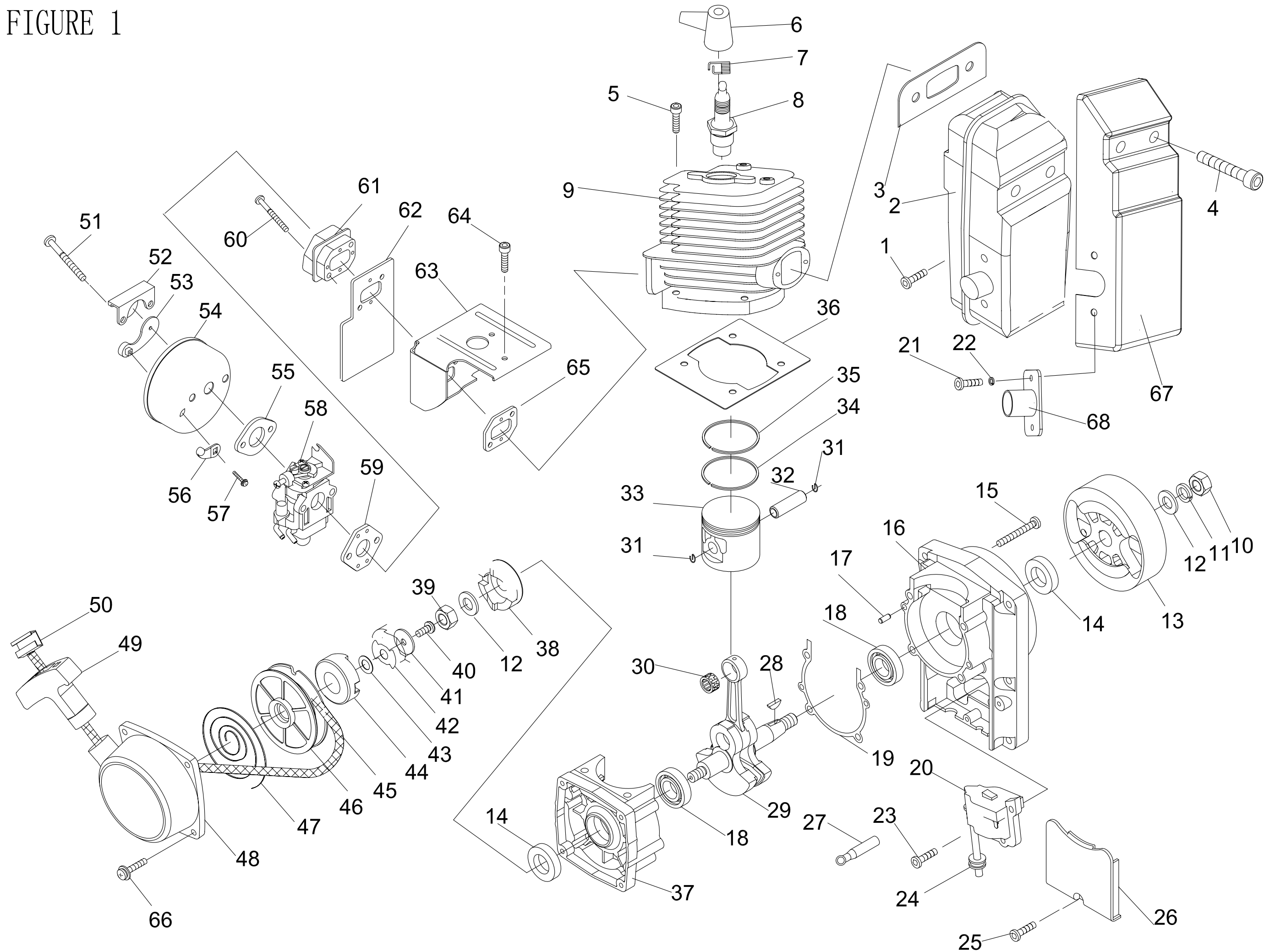


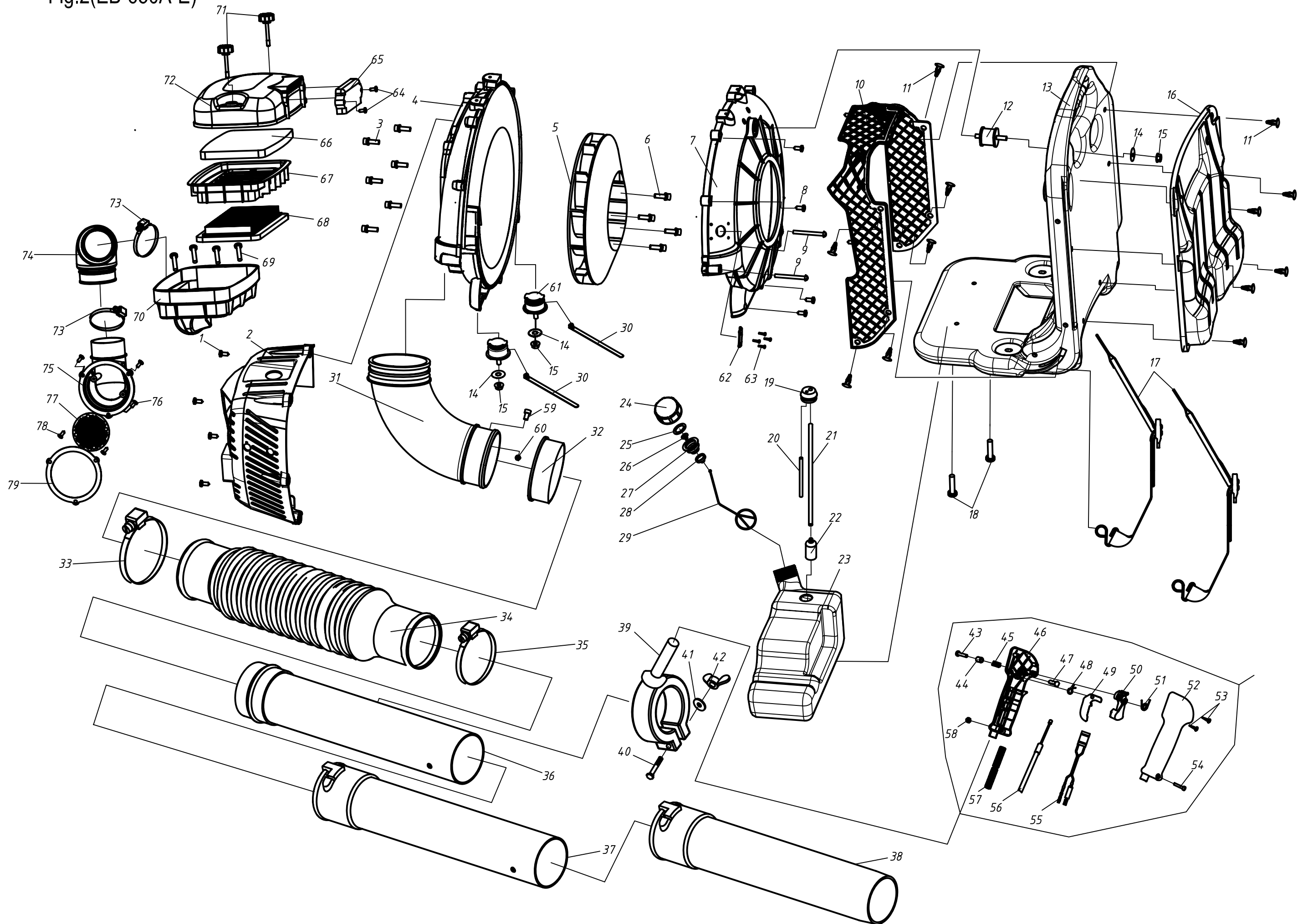
FIGURE 1



附图1 零部件清单(1E48FP-E) Appendix List of Attached Fig.1(1E48FP-E)

Ser.NO.	Part NO.	Part Name	Qty.	Ser.NO.	Part NO.	Part Name	Qty.	Ser.NO.	Part NO.	Part Name	Qty.
1-1	GB70.1+GB93+GB97.1 M6X16	螺钉组合件 BOLT	1	1-30	1E44F-2A.2-3	小头滚针轴承 BEARING	1	1-59	1E48FP-6	进气管垫 SEALING GASKET	1
1-2	1E48FP-E.3	消音器 MUFFLER	1	1-31	1E40F-03.02.01	活塞销挡环 RING	2	1-60	GB70.1+GB93+GB97.1 M5X30	螺钉组合件 BOLT	2
1-3	EB-650-E-1	消音器垫 MUFFER GASKET	1	1-32	1E48FP.5-2	活塞销 PISTON PIN	1	1-61	1E48FP-5	进气管 PIPE	1
1-4	GB/T70.1+GB97.1 M6X75-10.9	螺钉组合件 BOLT	2	1-33	1E48FP-E.1-1	活塞 PISTON	1	1-62	1E48FP-4	进气口垫(二) GASKET	1
1-5	GB70.1+GB93+GB97.1 M5X20	螺钉组合件 BOLT	4	1-34	1E48FP.5-4	第二道活塞环 PISTON RING	1	1-63	1E48FP-9	导风板 GUIDE AIR PLATE	1
1-6	1E46FP.1-1	高压帽 CAP	1	1-35	1E48FP.5-3	第一道活塞环 PISTON RING	1	1-64	GB70.1+GB93+GB97.1 M5X10	螺钉组合件 BOLT	2
1-7	1E40F-3A.8-2	火花塞卡簧 SPRING	1	1-36	1E48FP-10	缸垫 GASKET	1	1-65	1E48FP-3	进气口垫(一) GASKET	1
1-8	BPMR7A	火花塞 PLUG	1	1-37	1E48FP-E.2-2	后半曲轴箱 BACK CRANKCASE	1	1-66	GB70.1+GB93+GB97.1 M5X20	螺钉组合件 BOLT	4
1-9	1E48FP-E-1	缸体 CYLINDER	1	1-38	1E40FP-3Z-19	起动机拨盘 RATCHET	1	1-67	1E48FP-E.5	隔热罩 COVER	1
1-10	GB6171 M10X1.25	螺母 NUT	1	1-39	1E40FP-3Z-16	螺母 NUT	1	1-68	1E48FP-E.6	外排气管 COVER	1
1-11	GB93 10	垫圈 WASHER	1	1-40	GB67 M5X12	螺钉 SCREW	1				
1-12	GB97.1 10	垫圈 WASHER	2	1-41	1E40FP-3Z.4-4	垫圈 WASHER	1				
1-13	1E46FP.1.1	磁电机转子 ROTOR	1	1-42	1E40FP-3Z.4-5	导向片 GUIDE SLICE	1				
1-14	1E40FP-3Z-11	小油封 SEAL	2	1-43	GB860 8	垫圈 WASHER	1				
1-15	GB70.1+GB93+GB848 M5X35	螺钉组合件 BOLT	4	1-44	1E40FP-3Z.4-8	起动机轮 START WHEEL	1				
1-16	1E48FP-E.2-1	前半曲轴箱 FRONT CRANKCASE	1	1-45	1E40FP-3Z.4-9	拉绳 ROPE	1				
1-17	GB119 B4X10	销 PIN	2	1-46	1E40FP-3Z.4-6	起动机滑轮 PULLEY	1				
1-18	GB/T276 6302/P5	轴承 BEARING	2	1-47	1E40FP-3Z.4-7	平卷弹簧 SPRING	1				
1-19	1E48FP.6-2	曲轴箱密封垫 GASKET	1	1-48	1E40FP-3Z.4-1	起动机罩壳 CASE	1				
1-20	1E46FP.1.1	磁电机定子 ROTOR	1	1-49	1E40FP-3Z.4-2	起动机手把 HANDLE	1				
1-21	GB818 M4X6	螺钉 BOLT	2	1-50	1E40FP-3Z.4-10	增强套 PACK	1				
1-22	GB93 4	垫圈 WASHER	2	1-51	GB70.1+GB93+GB97.1 M5X50	螺钉组合件 BOLT	1				
1-23	GB70.1+GB93+GB97.1 M5X20	螺钉组合件 BOLT	2	1-52	1E48FP-8	挡油板 BAFFLE	1				
1-24	1E46FP.1-3	高压线胶塞 GROMMET	1	1-53	1E48FP.3-2	阻风门 CHOKER	1				
1-25	GB70.1+GB93+GB97.1 M5X20	螺钉组合件 BOLT	1	1-54	1E48FP.3-1	空滤器连接罩 COVER	1				
1-26	1E46FP-2	定子盖板 RETAINER	1	1-55	1E48FP-7	化油器垫 SEALING GASKET	1				
1-27	1E48FP.4.1	停车线 STOP WIRE	1	1-56	1E48FP.3-3	阻风门手柄 HANDLE	1				
1-28	GB1099 3X13	半圆键 KEY	1	1-57	GB845 ST2.9X8.5	自攻螺钉 SCREW	1				
1-29	1E48FP-E.1.1	曲轴连杆组 CRANKSHAFT	1	1-58	1E48FP-E.4	化油器 CARPURATOR	1				

Appendix List of Attached
Fig.2(EB-650A-E)



Appendix List of Attached Fig.2(EB-650A-E)

Ser. NO.	Part NO.	Part Name	Qty.	Ser. NO.	Part NO.	Part Name	Qty.	Ser. NO.	Part NO.	Part Name	Qty.
1	3WF-20.9-2	自攻螺钉M5×16 SCREW M5×16	4	19	EB-415.4.2-2	胶塞 VITTA PLUG	1	37	EB-650.7-3	吹风管二 PIPE	1
2	3W-30-2	防护罩 PROTECTION	1	20	EB-415.4.2-4	回油管 FUEL TUBE	100mm	38	EB-650-E.5-1	吹风管三 PIPE	1
3	GB70.1+GB93+GB97	螺钉组合件M6×30 SCREW M6×30	6	21	CG420.1.3.2-2	进油管 FUEL TUBE	270mm	39	EB-650.7.2-1(A)	手把组合 HANDLE	1
4	3W-30.2-1	前半蜗壳组合 VOLUTE CASE	1	22	P40.12.2-3A	燃油过滤器 FILTER	1	40	GB/T5783	螺栓 M6×45 BOLT M6×45	1
5	EB-650.2.1	叶轮组合 IMPELLER ASSEM	1	23	EB-500-E.4-1	油箱 FUEL TANK	1	41	GB/T96.1	垫圈Φ6 WASHER Φ6	1
6	GB70.1+GB93+GB97	螺钉组合件M5×35 SCREW M5×35	4	24	1E32FL.6.2-1	油箱盖 FUEL TANK LID	1	42	GB/T62	螺母M6 NUT M6	1
7	3W-30.2-2	后半蜗壳组合 VOLUTE CASE	1	25	CG420.1.3.1	密封垫 SEALING WASHER	1	43	GB/T846	自攻螺钉ST2.9×13 SCREW ST2.9×13	1
8	GB/T818	自攻螺钉M5×16 SCREW M5×16	12	26	EB-415.4.1.1-1	进气嘴 AIRVALVE	1	44	BL750.3-9	按钮 PUSH BUTTON	1
9	GB/T818	螺钉M5×55 SCREW M5×55	2	27	1E32FL.6.2-2	油箱内盖 LID	1	45	BL750.3-7	弹簧 SPRING	1
10	EB-500-E-3	防护网 PROTECT NET	1	28	1E32FL.6.2-3	端盖 LID	1	46	CG330B-3E.2.1.2	左半操纵盒 LEFT MANIPULATOR	1
11	3WF-2.6B-2	塑料卡子 BACK CLIP	12	29	1E32FL.6.2-4	防脱链 CHAIN	1	47	BL750.3-8	销 PIN	1
12	3W-11.3	减振柱 SUPPORT	1	30	250×4.5	线扎 LINE	2	48	BL750.3-2	扭簧 SPRING	1
13	EB-500-E-2	机架 FRAME	1	31	3WF-16.3.1	风机弯头组合 FAN JOINT ASSEM	1	49	BL750.3-3	手柄 HANDLE	1
14	GB/T96.1	垫圈 Φ6 WASHER Φ6	5	32	3F-30.18-2	橡胶套 RUBBER PLUG	1	50	BL750.3-4	油门手柄 HANDLE	1
15	GB/T6177	螺母 M6 NUT M6	3	33	JB8870	喉箍(Φ78~Φ101) CLIP(Φ78~Φ101)	1	51	BL750.3-1	长扭簧 LONG SPRING	1
16	EB-500-E-1	背垫 BACK MAT	1	34	EB-650.7-2	大软管 HOSE	1	52	CG330B-3E.2.1-1	右半操纵盒 RIGHT MANIPULATOR	1
17	EB-500-E.3	背带 BAND	2	35	JB8870	喉箍(Φ59~Φ82) CLIP(Φ59~Φ82)	1	53	GB/T845	螺钉ST2.9×18 SCREW ST2.9×18	3
18	GB70+GB93	螺钉组合件M6×16 SCREW M6×16	2	36	EB-650.7.1	吹风管一 PIPE	1	54	GB/T70.1	螺钉M5×30 SCREW M5×30	1

