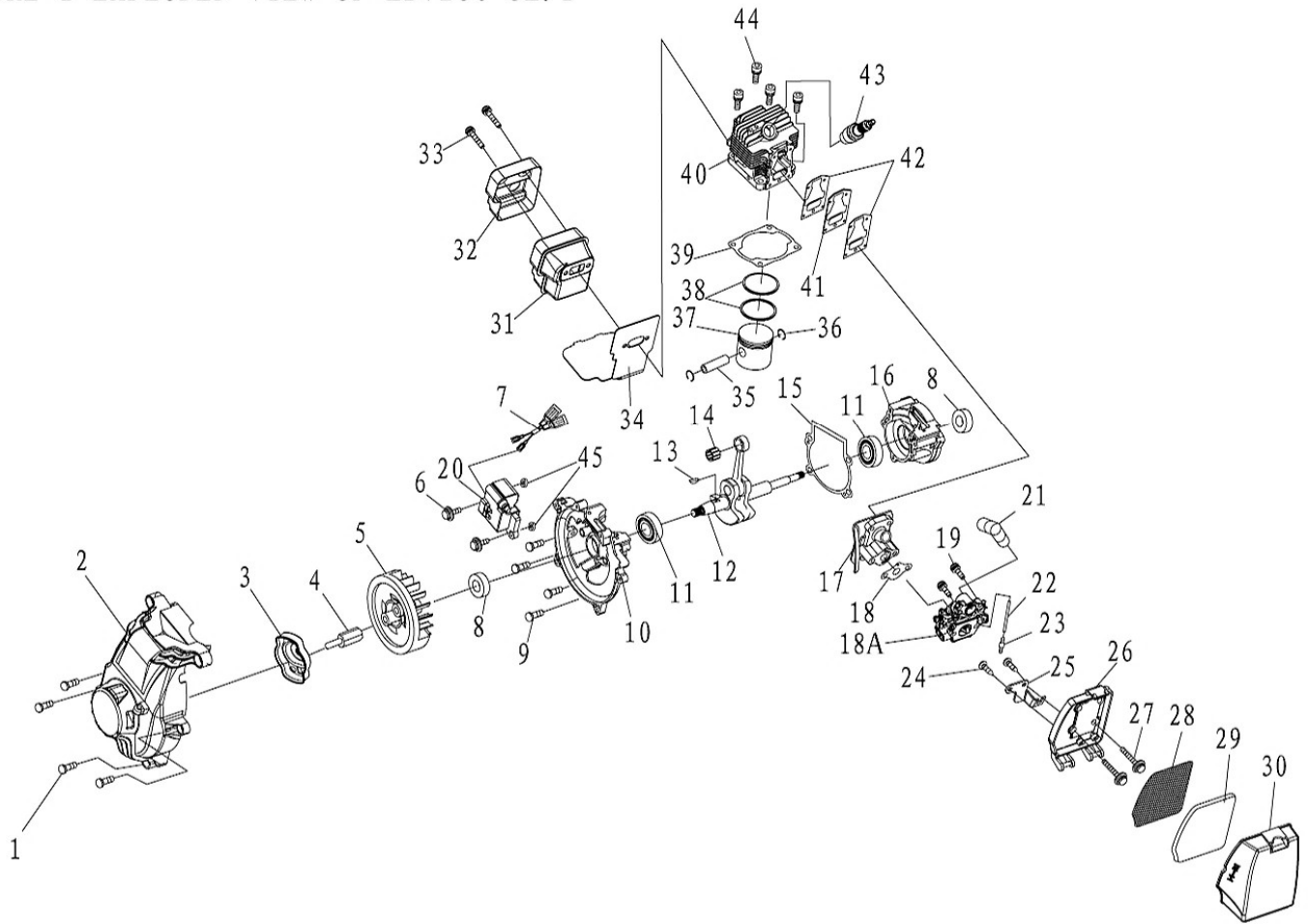


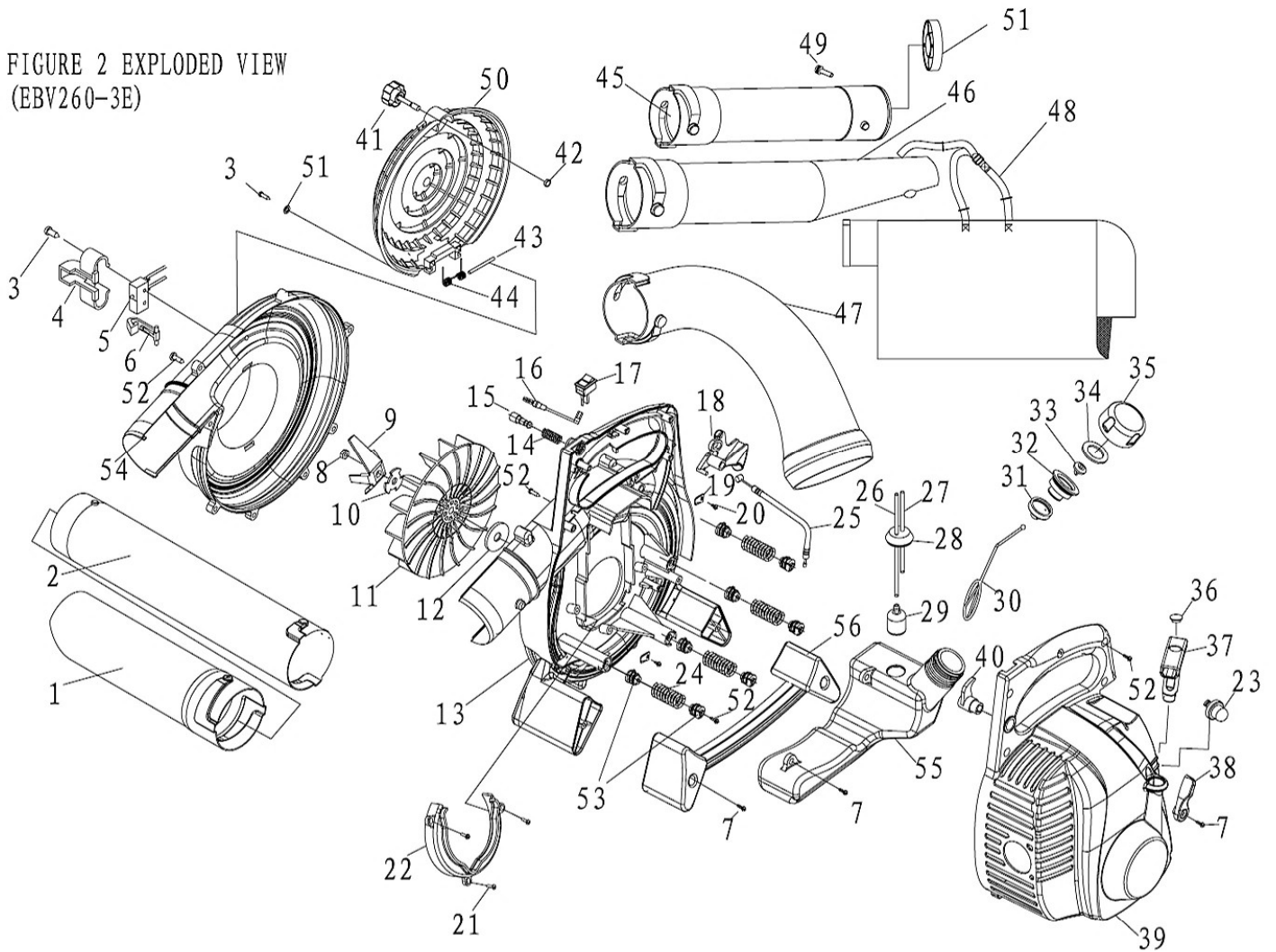
FIGURE 1 EXPLODED VIEW OF EBV260-3E.1



Appendix List of Attached Fig.1(EBV260-3E.1)

NO.	PART NO.	PART NAME	QTY.	NO.	PART NO.	PART NAME	QTY.
1	GB/T70+GB/T93+GB/T97	SCREW M5 × 14	4	30	EBV260-3E.1.8-1	CLEANER OUTSIDE COVER	1
2	EBV260-3E.1.6	STARTER	1	31	EBV260-3E.1.2	MUFFLER	1
3	EBV260-3E.1.7	START REEL	1	32	EBV260-3E.1.2.1	COVER	1
4	EBV260-3E-1	LINK SHIFT	1	33	GB/T70+GB/T93+GB/T97	SCREW M5 × 60-12.9	2
5	EBV260-3E.1.3-1	FLY WHEEL	1	34	EBV260-3E.1.2.2	MUFFLER GASKET	1
6	GB/T70.1+GB/T93+GB/T97	SCREW M5 × 20	2	35	1E31F.4-2	PISTON PIN	1
7	EBV245A.1.8	Parking	1	36	1E31F.4-3	PISTON PIN CIRCLET	2
8	1E36F-3E.11	OIL SEAL	2	37	1E34F-3E.7-1	PISTON	1
9	GB/T70.1	SCREW M5 × 18	4	38	1E34F.6-5	PISTON RING	2
10	1E34F-3E.11-2	FRONT HALF CRANK CASE	1	39	1E34F-3E-3	CYLINDER GASKET	1
11	GB/T276 6001/P6	BALL BEARING	2	40	1E34F-3E.4	CYLINDER ASSEMBLY	1
12	EBV260-3E.1.4.1	CRANK SHAFT COMP.	1	41	1E34F-3E.3	READ VALVE ASSEMBLY	1
13	GB/T1099	KEY 3 × 5 × 13	1	42	1E34F-3E-1A	INLET MANIFOLD GASKET	2
14	1E31F.4.1	NEEDLE BEARING	1	43	Z8C	SPARK PLUG	1
15	1E34F-3E.11-3	CRANK CASE GASKET	1	44	GB/T70.1	SCREW M5 × 18	4
16	1E34F-3E.11-1	BACK HALF CRANK CASE	1	45	EBV260-3E-2	GASKET	2
17	EBV260-3E.1.5	INLET MANIFOLD	1				
18	EBV260-3E.1-1	CARBURETOR GASKET	1				
18A	EBV260-3E.1.1	CARBURETOR	1				
19	GB/T70+GB/T93+GB/T97	SCREW M5 × 14	2				
20	EBV260-3E	MAGNETO STATOR	1				
21	1E40F-3E-9	INLET PIPE	1				
22	EB-415.4.2-4	FUEL PIPE (115mm)	1				
23	EBV260-3E.1.9.2A	CONNECTION	1				
24	GB/T845	SCREW ST4.8 × 9.5	2				
25	EBV260-3E.1.9.1	FUHL THROTTLE BRACKET	1				
26	EBV260-3E-NZZH	CLEANER INSIDE COVER	1				
27	GB/T70+GB/T93+GB/T97	SCREW M5 × 50	2				
28	EBV260-3E.1.8-5	FILTER BAFFLE	1				
29	EBV260-3E.1.8-4	FILTER	1				

FIGURE 2 EXPLODED VIEW
(EBV260-3E)



Appendix List of Attached Fig.2 (EBV260-3E)

Ser. NO.	Part NO.	Part Name	Qty.	Ser. NO.	Part NO.	Part Name	Qty.	Ser. NO.	Part NO.	Part Name	Qty.
1	EBV260-8	PIPE (2)	1	20	GB/T845	SCREW ST4. 2X9. 5	2	39	EBV260-3E. 2. 2	PROTECTION	1
2	EBV260A-1	PIPE (1)	1	21	3WF-20. 9-1	SCREW M5X10	3	40	EBV245A-2	INSIDE CONTROL	1
3	3WF-20. 9-1	SCREW M5X10	2	22	EBV260-3E. 2. 3	WIND-LEADING COVER	1	41	EBV260. 2. 4	SCREW	1
4	EBV260. 2. 3-2	SWITCH CARAPACE	1	23	YD-40. 6. 10-3	OIL CUP	1	42	GB/T3452. 1	SEALING WASHER 3. 15x1. 8	1
5	3WF-20. 9-1	SCREW M5X10	2	24	EBV245A-7	SPRING	4	43	EBV260. 2-2	SPING	1
6	EBV260. 2. 3. 2	SWITCH	1	25	EBV260-3E. 1. 9	FUEL THROTTLE	1	44	EBV260. 2-3	SPING	1
7	XSS46-2. 2-5	SCREW M5X20	5	26	CG420. 1. 3. 2-2	FUEL PIPE	1	45	EBV245A. 6-1	PIPE	1
8	GB/T6171	NUT M8X1 LH	1	27	EB-415. 4. 2-4	FUEL PIPE	1	46	EBV245A-8	PIPE	1
9	EBV245A. 8	COMMUNUTE BOARD	1	28	EB-415. 4. 2-2	PLUG	1	47	EBV245A-10	COLLECTING PIPE	1
10	EBV260-9	WASHER	1	29	1E34F. 9. 2-3C	FILTER	1	48	EBV245A. 7	COLLECTING BAG	1
11	EBV245A. 2-1	IMPELLER	1	30	1E32FL. 6. 2-4	CHAIN	1	49	GB/T9074. 4	SCREW M5x10	1
12	EBV245A-14	WASHER	1	31	EB-415. 4. 1. 1-1	AIRVALVE	1	50	EBV245A. 6-2	PROTECTION	1
13	EBV260-3E. 2. 1	VALUTE CASE	1	32	1E32FL. 6. 2-3	END COVER	1	51	GB/T96. 1	WASHER Φ6	1
14	EBV245A-4	SPRING	1	33	CG420. 1. 3. 1-2	SEALING WASHER	1	52	3WF-20. 9-2	SCREW M5x16	23
15	EBV245A-5	LOCK HANDLE	1	34	1E32FL. 6. 2-2	LID	1	53	EBV245A-6	CONNECTION	8
16	EBV245A. 1. 9	STOP WIRE	2	35	1E32FL. 6. 2-1	FUEL TANK LID	1	54	EBV245A. 2. 2. 1	VALUTE CASE	1
17	EBV260E. 6	STOP SWITCH	1	36	1E46FP-3. 3-9	BLOCK	1	55	EBV245A. 4-1	FUEL TANK	1
18	EBV245A-1	CONTROL HANDLE	1	37	EBV245A-12	STARTER	1	56	EBV245A-11	HANDLE	1
19	EBV245A-9	BAFFLE	2	38	EBV245A-3	OUTSIDE CONTROL	1				