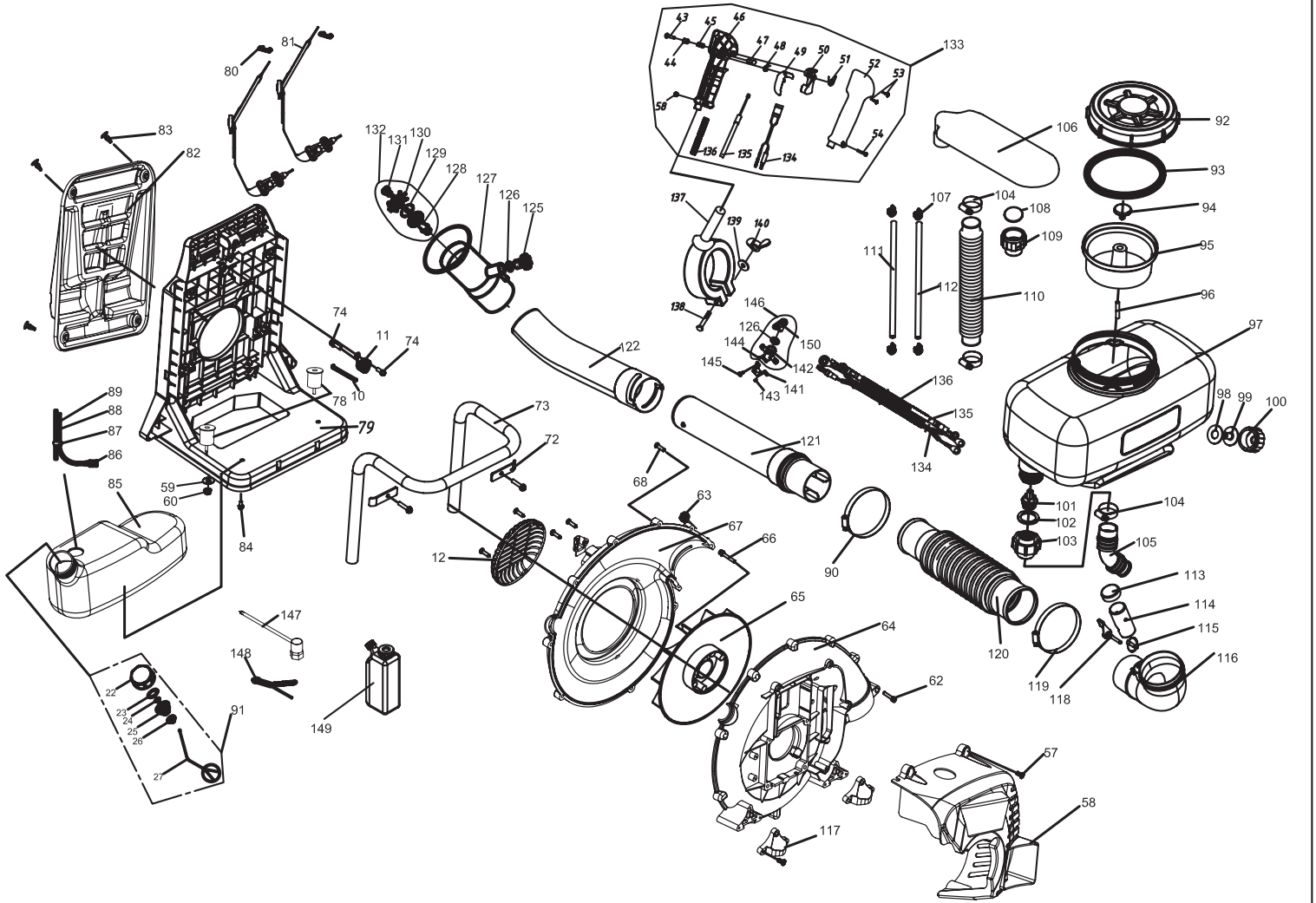




# 背负式喷雾喷粉机 3WFB-16 (2)



Ser. No.	Part No.	Part Name	Qty	Ser. No.	Part No.	Part Name	Qty	Ser. No.	Part No.	Part Name	Qty	Ser. No.	Part No.	Part Name	Qty	Ser. No.	Part No.	Part Name	Qty	Ser. No.	Part No.	Part Name	Qty
57	3WF-20.9-2	M5*16	4	75	3WF-14B-3	board	3	93	3WF-8.1-1	sealing washer	1	111	GB/T13327.1 10×1.5×330	tube	1	129	3WF-2.6.4.3.1-1	washer	1	147	3WZ-4.15.1	spanner	1
58	EB-420-E-1	protection	1	76	3WF-14-12	spring	1	94	3WF-14.3-1	air valve	1	112	GB/T13327.1 10×1.5×380	tube	1	130	3WF-2.6.4.3.1-3	rotation impeller	1	148	3WF-3.25.4	chain	1
59	GB/T96	washer 6	2	77	250×4.5	line	1	95	3WF-14.3-3	filter	1	113	3WF-16.3-1	plug	1	131	3WF-2.6.4.3.1-2	seat	1	149	ZB4-10.1	OIL bottle	1
60	GB/T6177	Nut M6	2	78	3F-30.17	rubber pillar	2	96	GB/T13327.1 8×1.5×510	tube	1	114	3WF-950.1.1-1	tube	1	132	3WF-2.6.4.3.1	nozzle	1	150	3WF-3.19.1-1	core	1
61	GB70+GB93+GB97	SCREW M6 × 30	6	79	3WF-14-7	frame	1	97	3WF-14B.2-1	chemical tank	1	115	3WF-16.3.1-3	board	1	133	CG330B-3E.2.1	handle	1				
62	GB/T818	SCREW M5 × 70	2	80	EB-650-10	axis	2	98	3WF-3A.1-2	sealing washer	1	116	3WFB-16.1-1	elbow	1	134	3W-15A-3	line	1	151			
63	GB/T6170	M5 Nut	2	81	EB-650.10	gallus	2	99	3WF-3A.1-1	link pipe	1	117	EB-420-E-1	Bracket	2	135	3WF-14B.3.1.1	line	1	152			
64	EB-420-E.2.2	volute case	1	82	3WF-14.7A	mat	1	100	3WF-3A.1-3	connector lid	1	118	3WF-16.3.1-2A	switch	1	136	CG328.1.1-4	tube	1	153			
65	EB-420-E.2.1	impeller	1	83	3WF-2.6B-2	plastic clip	5	101	3W-16.4-2	connector	1	119	GB/T 8870	hoopφ78-φ102	1	137	EB-650.7.2-1(A)	HANDLE	1	154			
66	GB70+GB93+GB97	M3X35(10.9)Screw	4	84	GB/T9074.4 M6×12	M6×12 Screw	2	102	3W-16.4-3	sealing washer	1	120	3WF-3.19-4	tube	1	138	GB/T5783	BOLT M6X45	1	155			
67	EB-420-E.2-1	volute case	1	85	EB-420-E.3-1A	gasoline tank	1	103	3W-16.4-1	connector lid	1	121	EB-650.7.1	connector	1	139	GB/T96.1	WASHER φ5	1	156			
68	XSS46-2.2-5	M5×20 Screw	10	86	1E34F.9.2-3D	filter	1	104	JB/T8870	hoopφ25-φ40	3	122	3W-16.8-2	tube	1	140	GB/T62	NUT M5	1	157			
69	GB70+GB93+GB97	M6×30 Screw	6	87	EB-415.4.2-2	stopper	1	105	3WF-14B-5	connector	1	123				141	3WF-14.5.1.2-1	seat	1	158			
70	3WF-14-10	board	1	88	EB-415.4.2-4	tube(180mm)	1	106	3WF-16.2-1	tube	1	124				142	3WF-3.19.1-2	shell	1	159			
71	3WF-14-11	board	1	89	CG420.1.3.2-2	tube(350mm)	1	107	3WF-3-3	clip	4	125	3WF-3.19.3-3	valve	1	143	GB/T 845	ST4.2X8 Screw	2	160			
72	3WF-14-9	board	2	90	GB/T 8870	hoopφ59-φ82	1	108	3WF-950.2.1-2	loop	1	126	GB1235 16×2.4	sealing washer	1	144	GB/T828	M3X52.5 screw	1				
73	3WF-14B-4	support	1	91	HB33.2.2	Cap Assy	1	109	3WF-950.2.1-1	connector lid	1	127	3WF-2.6.4.3-1	nozzle	1	145	GB/T845	ST4.8×13 screw	1				
74	GB70+GB93+GB97	M6×16 Screw	4	92	3WF-8.1-2A	lid	1	110	3WF-16.2-3	tube	1	128	3WF-2.6.4.3.1.1	nozzle	1	146	3WF-3.19.1	cock assen(no board)	1				