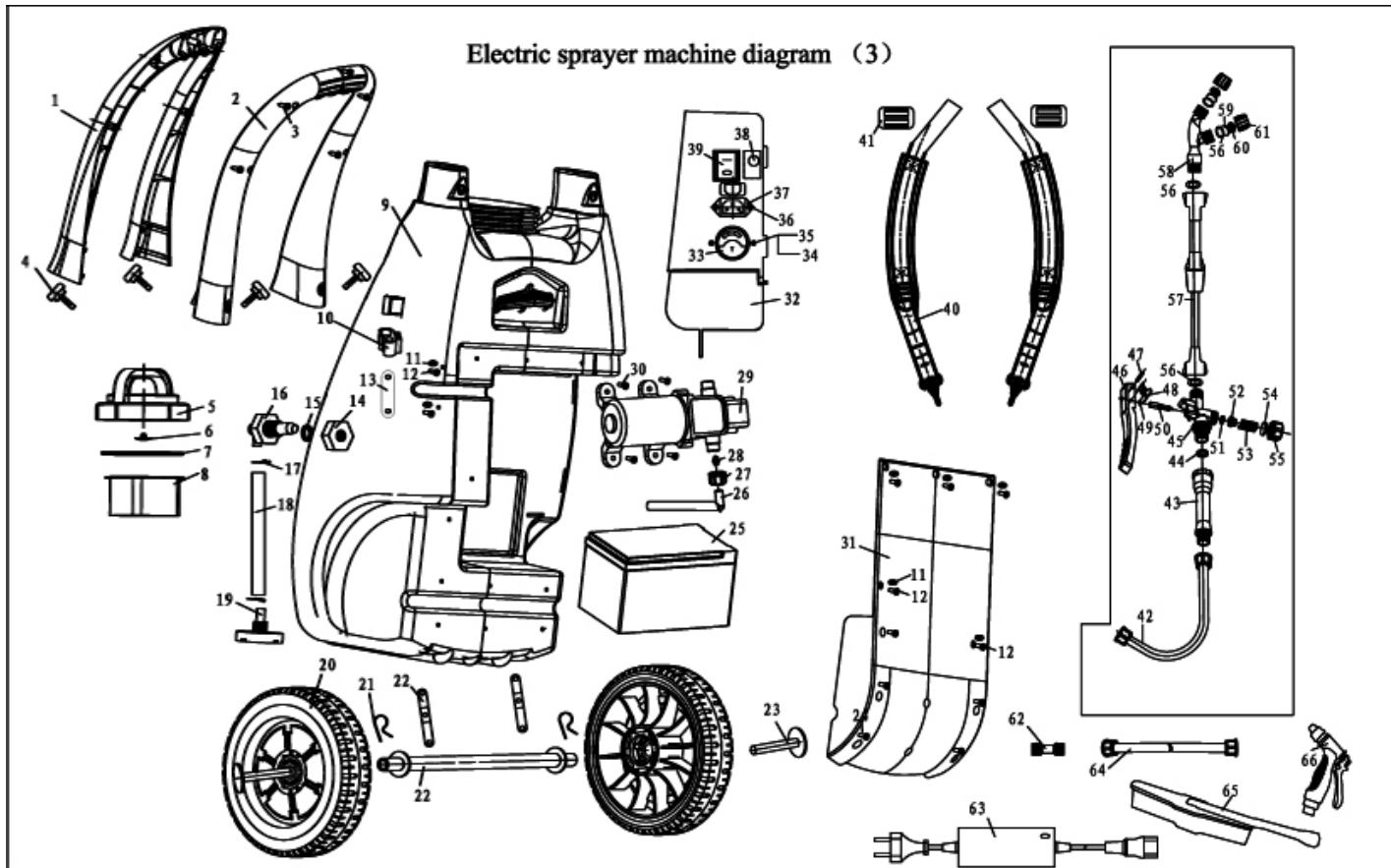


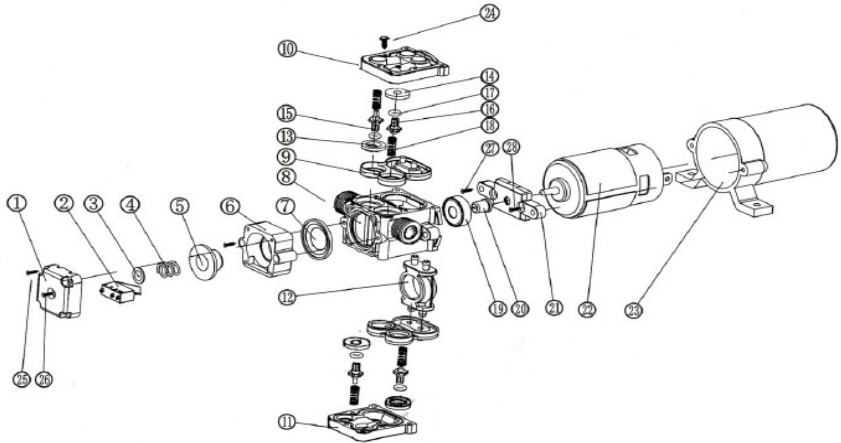
Electric sprayer machine diagram (3)



Y U47FC

| NO. | Part No. | Part Name | Qty. | NO. | Part No. | Part Name | Qty. | NO. | Part No. | Part Name | Qty. |
|-----|---------------|------------------------|------|-----|----------------|---------------------------|------|-----|----------------|----------------------|------|
| 1 | WS-25DA. 2-1 | Front handle | 1 | 23 | WS-25DA. 8-3 | Head | 2 | 45 | WS-18D. 5-1 | Switchbody | 1 |
| 2 | WS-25DA. 2-2 | Rear handle | 1 | 24 | GB/T 818 | Screw M5*10 | 6 | 46 | WS-18D. 5-8 | Press plate | 1 |
| 3 | | Screw ST4*12 | 5 | 25 | WS-HYS1212 | Battery | 1 | 47 | WS-18D. 5-10 | Switch pin | 1 |
| 4 | WS-25DA. 3 | Locking screw | 4 | 26 | WS-18D-2A | Absorb pipe | 1 | 48 | WS-18D. 5-9 | Lock catch | 1 |
| 5 | WS-18D. 9A-1 | Container cap | 1 | 27 | WS16-13-08-01B | Case nut M18 | 1 | 49 | GB/T3452. 1 | O-Ring 4.4×1.8 | 1 |
| 6 | WSJB-6. 2-2 | Air intake plug | 1 | 28 | WS16-13-08-02 | Scarf joint | 1 | 50 | WS-18D. 5-2 | Pressure shaft | 1 |
| 7 | WS-18D. 9A-2 | Felt washer | 1 | 29 | FD-G3400 | Pump | 1 | 51 | WS-18D. 5-3 | Switch felt washer | 1 |
| 8 | WS16-03 | Large filter | 1 | 30 | GB/T 818 | Screw M5*12 | 4 | 52 | WS-18D. 5-4 | Washer seat | 1 |
| 9 | WS-25DA. 1 | Water tank | 1 | 31 | WS-25DA-1 | Cover plant | 1 | 53 | WS-18D. 5-5 | Spring | 1 |
| 10 | WS-16D-1 | Round rod clamp | 1 | 32 | WS-25DA. 4-1 | Bead plant | 1 | 54 | WS-18D. 5-6 | Switch nut washer | 1 |
| 11 | GB/T 96. 1 | Washer $\varnothing 5$ | 6 | 33 | WS-25DA. 4. 1 | Voltmeter | 1 | 55 | WS-18D. 5-7 | Switch nut | 1 |
| 12 | GB/T 818 | Screw M5*8 | 7 | 34 | GB/T 96. 1 | Washer $\varnothing 2. 5$ | 2 | 56 | WS-18D. 11-2 | Felt washer | 4 |
| 13 | WS-25DA-4 | Clip | 1 | 35 | GB/T 845 | Screw ST2. 2*13 | 2 | 57 | SSG. A | Telescopic spray rod | 1 |
| 14 | WS-18DZ-1 | Case nut | 1 | 36 | GB/T 845 | Screw ST3. 5*9. 5 | 2 | 58 | WS16-13-04B | F style nozzle body | 1 |
| 15 | WS-18DZ. 1-4 | Rubber washe | 1 | 37 | WS-25DA. 4. 3 | The line for Charging | 1 | 59 | XSP-02 | Conical spray slice | 2 |
| 16 | WS-18DZ. 1-3 | Water pipe | 1 | 38 | WS-25DA. 4. 2 | Speed governor | 1 | 60 | WSYP-02A | Rotary water slice | 2 |
| 17 | WS-18DZ. 1-2 | Snap link | 2 | 39 | KCD7-2211N | Power switch | 1 | 61 | WS16-13-01C-03 | Join | 1 |
| 18 | WS-25DA. 5-1 | Water pipe | 1 | 40 | WS-25DA. 9 | Belt | 1 | 62 | WS16-13-01-03 | Spray head Nut | 1 |
| 19 | WS-18DZ. 1. 1 | Little filter | 1 | 41 | WS20-12-05 | Fastening buckle | 2 | 63 | WS1218Z-D3K | Charger | 1 |
| 20 | WS-25DA. 8. 1 | Wheel | 2 | 42 | WS16-13-01B | Hose | 1 | 64 | WS16-13-01B | Hose | 1 |
| 21 | WSS-76. 5-2 | R-pin | 2 | 43 | WS-18D. 5-13 | Handle switch | 1 | 65 | WS-25DA. 7 | Brush | 1 |
| 22 | WS-25DA. 8-2 | Axle | 1 | 44 | WS-18D. 5-12 | Felt washer | 1 | 66 | WS-25DA. 6 | Airbrush | 1 |

Pump diagram



| spare parts for pump | | | | | |
|----------------------|-------------------------|----------|-----|--------------------------|----------|
| No. | Name | Quantity | No. | Name | Quantity |
| 1 | pressure valve lid | 1 | 15 | inlet valve filter | 2 |
| 2 | pressure switch | 1 | 16 | outlet valve filter | 2 |
| 3 | pressure spring cushion | 1 | 17 | valve filter seal washer | 4 |
| 4 | pressure spring | 1 | 18 | valve filter spring | 4 |
| 5 | pressure piston | 1 | 19 | bearing | 1 |
| 6 | pressure fixity | 1 | 20 | slanting shaft sheath | 1 |
| 7 | pressure rubber | 1 | 21 | motor holder | 1 |
| 8 | pressure pump body | 1 | 22 | motor | 1 |
| 9 | diaphragm | 2 | 23 | motor cover body | 1 |
| 10 | diaphragm pump up lid | 1 | 24 | screw M3x18 | 10 |
| 11 | diaphragm pump down lid | 1 | 25 | screw M3x15 | 4 |
| 12 | bearing move seat | 1 | 26 | screw M3x14 | 1 |
| 13 | inlet valve seat | 2 | 27 | screw M3x25 | 2 |
| 14 | outlet valve seat | 2 | 28 | screw M3x8 | 2 |

Electric circuit diagram

