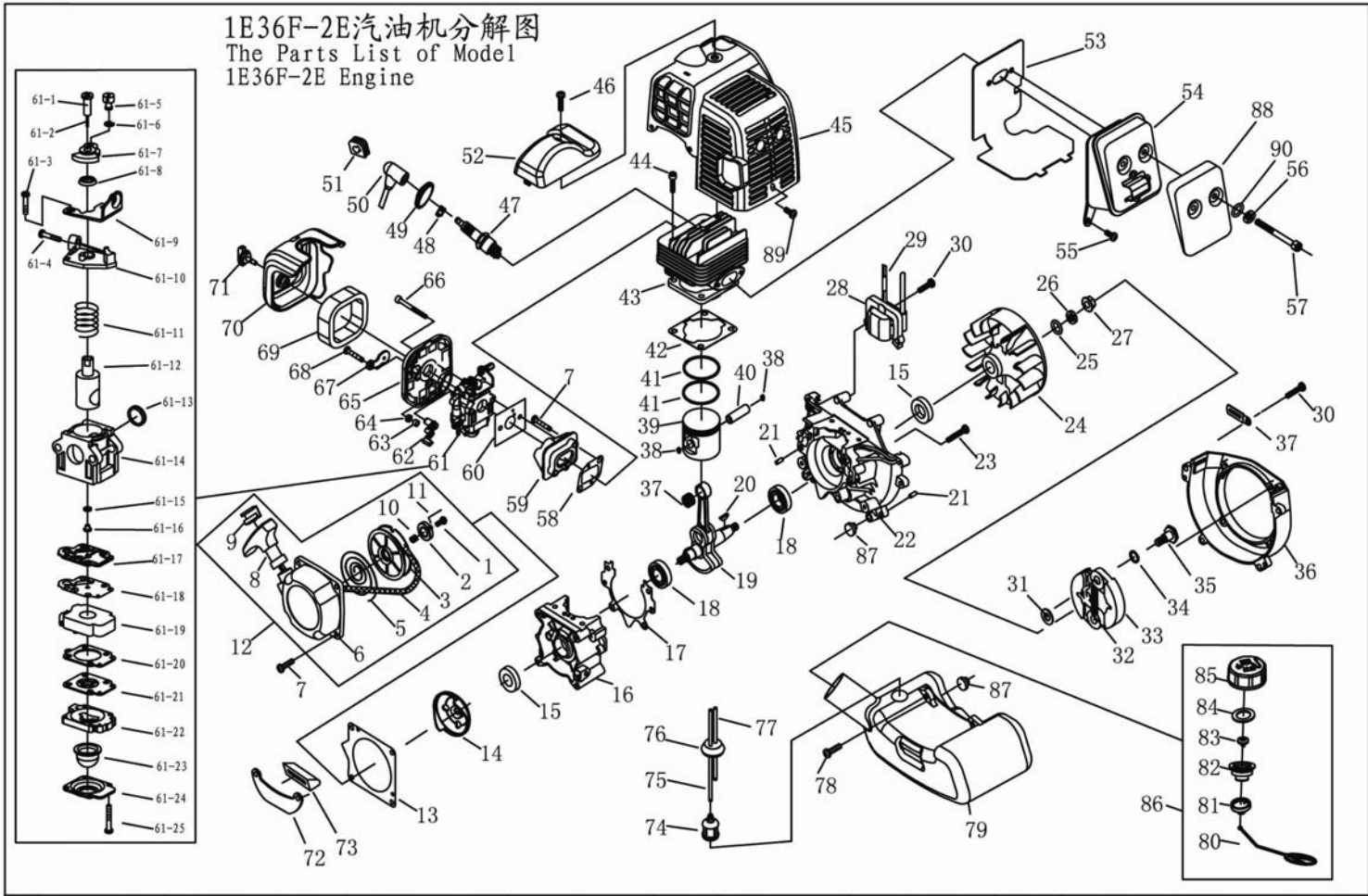


Appendix. list of Pump Parts

Ser.NO	Part NO	Part Name	Qty.	Ser.NO	Part NO	Part Name	Qty.
1	QGZ215-30.4-1	HOSE JOINT	2	24	QGZ40-35.10	THROTTLE LEVER	1
2	QGZ25-30.4-3	HOSE COUPLING	2	25	GB 97.1	WASHER	2
3	QGZ25-30.4-2	PACKING(PLUG)	2	26	GB 93	WASHER SPRING	2
4	QGZ25-30-6	VALVE CASE	1	27	GB 889	NUT M5	1
5	QGZ25-30.2	CHECK VALVE	1	28	GB 6170	NUT M8	4
6	GB 9074.15	BOLT W/S.W M6X20	7	29	QGZ40-35A.3	RUBBER PILLAR	1
7	GB 3452.1	O-SEALING RING	2	30	GB6170	NUT M5	1
8	QGZ25-30-9	PLUG	2	31	QGZ40-35A.1	BASE	1
9	GB 9074.15	BOLT W/S.W M8X20	4	32	QGZ40-35-5	UNTI VIBRATION RUBBER	4
10	QGZ25-30-3	PUMP CASE	1	33	GB 96	WASHER	4
11	QGZ25-30-8	PACKING	1	34	GB 845	SCREW ST4.2X13	4
12	QGZ25-30-7	BEND	1				
13	GB 9074.15	BOLT W/S.W M8X30	2				
14	GB 3452.1	O-SEALING RING	1				
15	QGZ25-30-5	VOLUTE SHELL	1				
16	QGZ25-30-4	IMPELLER	1				
17	GB 3452.1	O-SEALING RING	1				
18	QGZ40-35.4	MECHANICAL SEAL	1				
19	QGZ40-35-8	SEAL PACKING	4				
20	GB 70	SCREW M6X40	4				
21	GB 3452.1	O-SEALING RING	1				
22	QGZ25-30-2	CASING COVER	1				
23	QGZ25-30-10	HANDLE	1				

1E36F-2E汽油机分解图
The Parts List of Model
1E36F-2E Engine



序号 NO.	代号 Part No.	名称 Part Name	数量 Qty.	序号 NO.	代号 Part No.	名称 Part Name	数量 Qty.	序号 NO.	代号 Part No.	名称 Part Name	数量 Qty.	序号 NO.	代号 Part No.	名称 Part Name	数量 Qty.
1	1E36FE. 9-3	螺钉 Screw	1	30	GB9074. 13	螺栓组合件 M5×20 Bolt M5×20	6	59	1E36F-2A-2	进气管 Admitting Pipe	1	63	1E34F. 1-7	止逆塞 Stop ring	1
2	1E36FE. 9-4	起动机 Ratchet	1	31	1E36F-3	垫圈B WasherB	2	60	1E36F-E-11	化油器垫 Gasket	1	64	GB/T6170	螺母 M4 Nut M4	1
3	1E36FE. 9-1	绳轮 Start Rope Reel	1	32	1E36F-E. 6A-1	拉簧 Spring	1	61	1E36F-2E. 1	化油器 Carburetor	1	65	1E34F. 1. 1	空滤器内罩 Cleaner inside cover	1
4	1E36FE. 9-5	起动机绳 Rope	1	33	1E36F-2C. 4. 1	添紧块 Expander	2	61-1		主量针套 Thimble	1	66	GB/T9074. 4	螺钉组合件 M5×55 Screw M5×55	2
5	1E36FE. 9-7	起动机簧 Recoil Spring	1	34	1E40F-5-11	波形垫圈 Washer	2	61-2		主量针 Main Needle	1	67	1E34F. 1-3	阻风门 CHOKER	1
6	1E36FE. 9-8	壳体 Start Cover Ass'y	1	35	1E40F-5-12	螺钉轴 Screw Pin	2	61-3		油门调节螺钉 Screw	1	68	GB/T845	自攻螺钉 ST4. 2×12 Screw ST4. 2×12	1
7	GB9074. 4	螺钉组合件 M5×25 Screw M5×25	6	36	1E36FE-5	磁电机罩壳 Fan Cover	1	61-4	GB/T823	螺钉 M3×10 Screw M3×10	2	69	1E34F. 1-1	滤芯 Filter Net	1
8	1E40FP-3Z. 4-2	起动机手柄 Start Handle	1	37	1E36F-2. 4. 1	小头滚针轴承 Bearing	1	61-5		挂线轴 Swivel	1	70	1E36F-E. 7-1	空滤器外罩 Cleaner Outside Cover	1
9	1E40FP-3Z. 4-10	增强套 Ring	1	38	1E36F. 10-2	活塞销挡圈 Ring	2	61-6	GB896	开口当圈 3. 5 Ring 3. 5	1	71	1E34F. 1. 2	大头螺钉 Screw	1
10	1E36FE. 9-6	压簧 Spring	1	39	1E36F-E. 4-1	活塞 Piston	1	61-7		旋架 Turn Frame	1	72	1E36F-E-5	油箱挂架 Stand	1
11	1E36FE. 9-2	起动机杆 Start pole	2	40	1E36F. 10-1	活塞销 Piston Pin	1	61-8		密封圈 Airproof Ring	1	73	1E40F-5A-2	橡胶套 Rubber Cover	1
12	1E36FE. 9	起动机 Starter	1	41	1E36F. 10-3	活塞环 Piston Ring	2	61-9		上压板 Bracket	1	74	1E34F. 9. 2-3A	燃油过滤器 Cleaner Cover	1
13	1E40F-5-10	起动机垫 Gasket	1	42	1E36F-E-3	缸垫 Gasket	1	61-10		固定板 Fixed Board	1	75	CG420. 1. 3. 2-2	透明塑料管 Fuel Pipe	1
14	1E36FE. 7	起动机盘焊合 Start Reel	1	43	1E36F-2E-1	缸体 Cylinder	1	61-11		扭簧 Spring	1	76	EB-415. 34. 2-2	油管塞 Plug	1
15	1E36F. 2	小油封 Oil-seal	2	44	GB/T70. 1	螺钉 M5×18 Screw M5×18	4	61-12		柱塞 Column	1	77	EB-415. 4. 2-4	透明塑料管 Fuel Pipe	1
16	1E36F-E. 8-2	后半曲轴箱 Crank Case	1	45	1E36F-E. 5	缸体护罩组合 Guide Cover Ass'y	1	61-13		密封垫 Ring	1	78	GB/T9074. 4	螺钉组合件M5×16 Screw M5×16	2
17	1E36F-2. 6-3	曲轴箱密封垫 Gasket	1	46	GB9074. 4	螺钉组合件 M5×16 Screw M5×16	1	61-14		上本体 OverBody	1	79	1E36FE. 10-1	油箱 Fuel Tank	1
18	GB/T276	轴承 6201/P6 Bearing 6201/P6	2	47	L8RTC	火花塞 Spark Plug	1	61-15		O形圈 O Ring	1	80	1E32FL. 6. 2-4	防脱链 Chain	1
19	1E36F-E. 4. 1	曲轴连杆组 Crank Shaft	1	48	1E40F-3A. 8-2	火花塞卡簧 Spring	1	61-16		王型孔 Pinhole	1	81	1E32FL. 6. 2-3	端盖 End Cover	1
20	GB1099	半圆键 3×5×13 Key 3x5x13	1	49	1E34F. 5-3	火花塞罩 Plug Cap	1	61-17		中体密封片 Gasket, Pump	1	82	1E32FL. 6. 2-2	油箱内盖 Inside Cover	1
21	GB119	销 B4×10 Pin B4×10	4	50	1E34F. 5-2	高压帽 Cap	1	61-18		中体膜片 Diaphragm, Pump	1	83	EB-415. 4. 1. 1-1	进气嘴 Inlet	1
22	1E36F-E. 8-1	前半曲轴箱 Crank Case	1	51	1E40F-5. 3-1	胶塞 Plug	1	61-19		中体部件 Mid-body	1	84	CG420. 1. 3. 1-2	密封垫 Gasket	1
23	GB70. 1	螺钉 M5×30 Screw M5×30	4	52	1E36F-E-4	上压盖 Cover	1	61-20		下体密封片 Gasket Diaphragm	1	85	1E32FL. 6. 2-1	油箱盖 Fuel Tank Lid	1
24	1E36F-2E. 2. 1. 1	磁电机转子 MAGNETO ROTOR COMP.	1	53	1E36F-E-2	消音器垫 Gasket	1	61-21		吸油膜片部件 Diaphragm	1	86	1E32FL. 6. 2	油箱盖组合 Lid Ass'y	1
25	GB/T859	垫圈8	1	54	HA36-2. 3	消音器 Muffler	1	61-22		下体部件 Body Purge	1	87	1E40F-5A-3	橡胶垫 Rubber washer	2
26	GB/T97. 1	垫圈8 Washer8	1	55	GB9074. 4	螺钉组合件M5×12 Screw M5×12	1	61-23		油杯 Pump Priming	1	88	1E36F-2E-3	隔热罩 Cover	1
27	GB6170	螺母 M8 Nut M8	1	56	GB93	垫圈5 Washer5	2	61-24		下压板 Cover Pump	1	89	GB9074. 4	螺钉组合件 M4×8 Screw M4×8	1
28	1E36F-2E. 2. 1. 2	磁电机定子 IGNITION COIL COMP.	1	57	GB70. 1	螺钉 M5X60-12. 9 Nut M5X60-12. 9	2	61-25	GB/T818	螺钉 M3×22 Screw M3×22	4	90	GB97. 1	垫圈 5 Washer5	2
29	1E36F-2. 3. 1	停车线圈 Cord Comp.	1	58	1E36F-E-8	进气管垫 Gasket	1	62	1E34F. 1-2	阻风门手柄 Choker Handle	1				