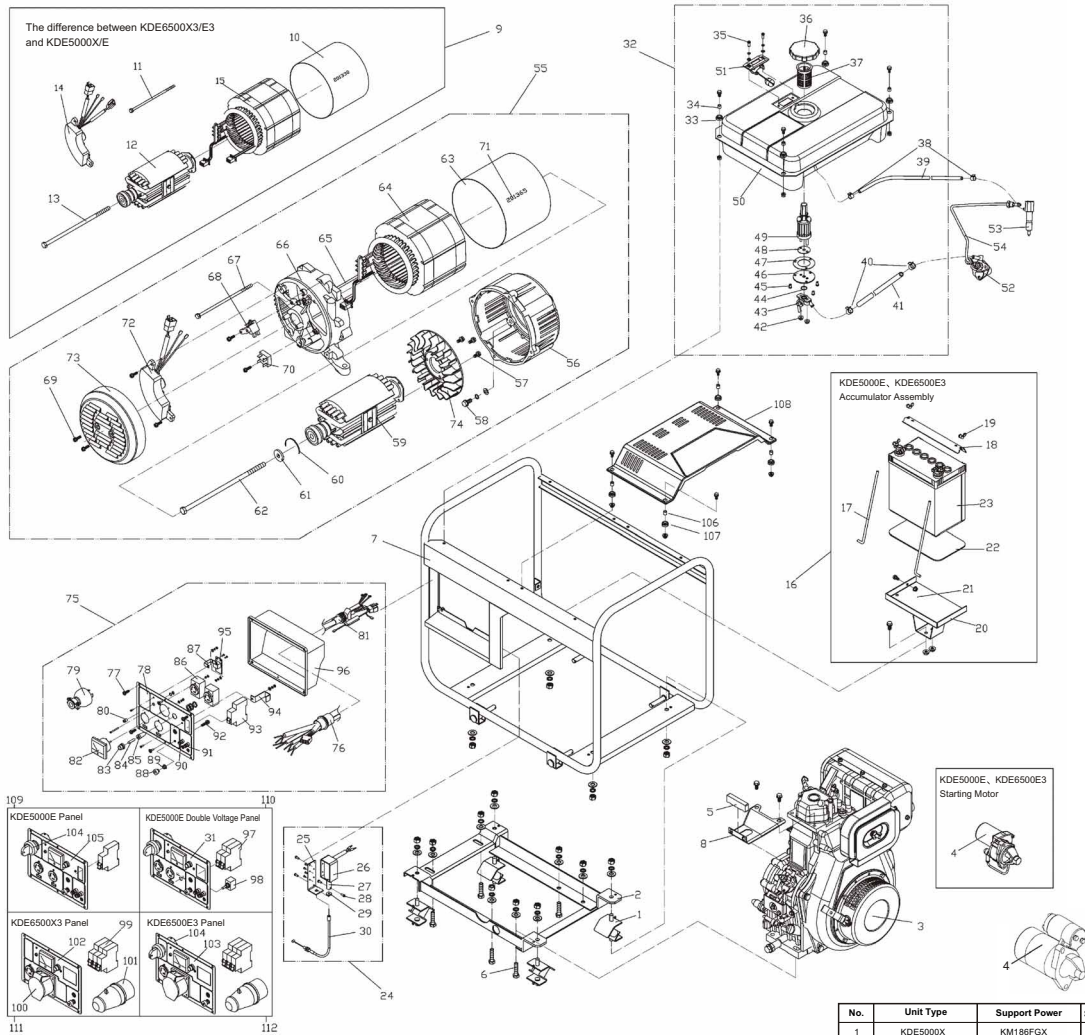


# ASSEMBLY AND PARTS ALBUM

## KDE5000X/E、KDE6500X/E、KDE6000X3/E3、KDE6500X3/E3



No.	Unit Type	Support Power	Support Motor
1	KDE5000X	KM186FGX	190
2	KDE5000E	KM186FGE	190
3	KDE6500X	KM186FAGE	204
4	KDE6500E	KM186FAGE	204
5	KDE6000X3	KM186FGX3	190
6	KDE6000E3	KM186FGE3	190
7	KDE6500X3	KM186FAGX3	204
8	KDE6500E3	KM186FAGE3	204

No.	Code.	Description	Qty.	No.	Code.	Description	Qty.	No.	Code.	Description	Qty.
1	KDE5000X-10000	Cushion	4	29	KDE3500X-40006a	Electromagnet Washer	1	57	GB853-86	Self-tapping Locking Screw ST5	3
2	KDE5000X-60000	Housing Base Weldment Assembly	1	30	KDE5000X-41000a	Flexible Shaft Unit	1	58	GB5781-86	Bolt M6X20	4
3	KM186FG-20000	Air-cooled Diesel	1	31	KDE5000E-13100J	Instrument Panel	1	59	SKM.5741.01	Generator Rotator	1
4	KM186F-15100	Starting Motor	1	32	KDE5000X-30200	Fuel Tank Assembly	1	60	6204DV	Clip Ring	1
5	KDE5000X-00002	Assistant Support Frame Cushion	1	33	KDE5000X-30204	Cushion	4	61	8KM.2182.01	Pull-through Shaft Bolt Washer	1
6	GB5783-86	Bolt M10X40	8	34	KDE5000X-30005	Sheath	4	62	8KM.2002.01	Pull-through Shaft Bolt M10X214	1
7	KDE5000X-50000	Housing Weldment Assembly	1	35	GB7819-1-2000	Screw M5X12	2	63	8KM.0132.01	Electrical Machinery Control Plate	1
8	KDE5000E-00001	Engine Assistant Support Frame	1	36	KM168F-10002	Fuel Tank Cap Joint Assembly	1	64	SKM.6801.01	Electrical Machinery Stator	1
9	KTS-5	Three-phase Machine Assembly	1	37	KM168F-10003	Fuel Filler Screen	1	65	8KM.203.009	Bolt M5	2
10	8KM.0132.01	Three-phase Machine Safeguard Plate	1	38	KM168F-10013	Fuel Return Pipe Clip	2	66	8KM.0342.01	Electrical Machinery Rare Cover	1
11	GB818-85	Screw M5X26	4	39	KDE5000X-30002	Fuel Return Pipe	1	67	GB5787-86	Bolt M6X120	4
12	SKM.6741.01	Three-phase Generator Rotator	1	40	KM168F-30011	Fuel Filler Pipe Clip	2	68	D104	Carbon Brush	1
13	KDE5000X-50000	Pull-through Shaft Bolt M10X224	1	41	KDE5000X-30001	Fuel Filler Pipe	1	69	GB5653-86	Self-tapping Locking Screw	2
14	SKM.5242.005	Three-phase Excitation AVR	1	42	GB6177-86	Nut M6	2	70	RBPC35-10	Gratz Rectifier	1
15	SKM.6801.01	Three-phase Machine Stator	1	43	KM168F-10400	Fuel Tank Switch Assembly	1	71		Generator Serial Number	1
16	KDE5000E-80000	Accumulator Assembly	1	44	GB3452.1-92	O-Ring	1	72	AVR	Excitation AVR	1
17	KDE3500E-00003a	Screw Rod	2	45	GB7819.1-2000	Screw	3	73	8KM.0131.01	Electrical Machinery Booting Air Cover	1
18	KDE3500E-00005a	Accumulator Pressure Plate	1	46	KDE5000X-31006	Seal Plate	1	74	8KM.4351.01	Electrical Machinery Fan	1
19	GB62-88	Wing Nut M6	2	47	KDE5000X-31007	Seal Washer	1	75	KDE5000X-70000	Panel Assembly	1
20	GB6177-86	Nut M6	1	48	KM168F-10007	Seal Washer	1	76	KDE5000X-70003	Wiring Harness Setting Sheath	1
21	KDE3500E-00002a	Accumulator Washer	1	49	KM168F-10300	Element Assembly	1	77	GB818-85	Screw M6X16	4
22	36AH	Accumulator 12V	1	50	KDE5000X-31000	Fuel Tank Weldment Assembly	1	78	KDE5000X-70001	Instrument Panel	1
23	KDE3500X-40000a	Electromagnet Assembly	1	51	KDE5000X-32000	Oil Mark Assembly	1	79	250V/28A	Single-phase Pin	1
24	KDE3500X-44000a	Electromagnet Setting Plate	1	52	KM168F-12000	Fuel Pump	1	80	CLAD	Oil Pressure Alerting Lamp	1
25	DCT-12-C	Iron-core	1	53	KM168F-13000	Nozzle	1	81	KDE5000X-70009	Circuitry Setting Sheath	1
26	DCT-12-C	Iron-core	1	54	KM168F-10500	High-Pressure Fuel Pipe	1	82	MV52.600-300V	Voltmeter KD-45	1
27	DCT-12-C	Iron-core	1	55	KT-5	Single-phase Electrical Machinery Assembly	1	83	BLX	Fuse Box	1
28	GB7818-85	Screw M5X8	2	56	8KM.3041.01	Electrical Machinery Forepart Cover	1	84	φ6 x 30	Fuse	1

KIPOR POWER CO., LTD.

11/F Suntime International Mansion, 450 Fushan Road, Pudong, Shanghai, China  
TEL: 86-21-58208881 FAX: 86-21-58208877