

CS45A/52A/58A

CS52 (欧V款)

Fig.1 POWER UNIT

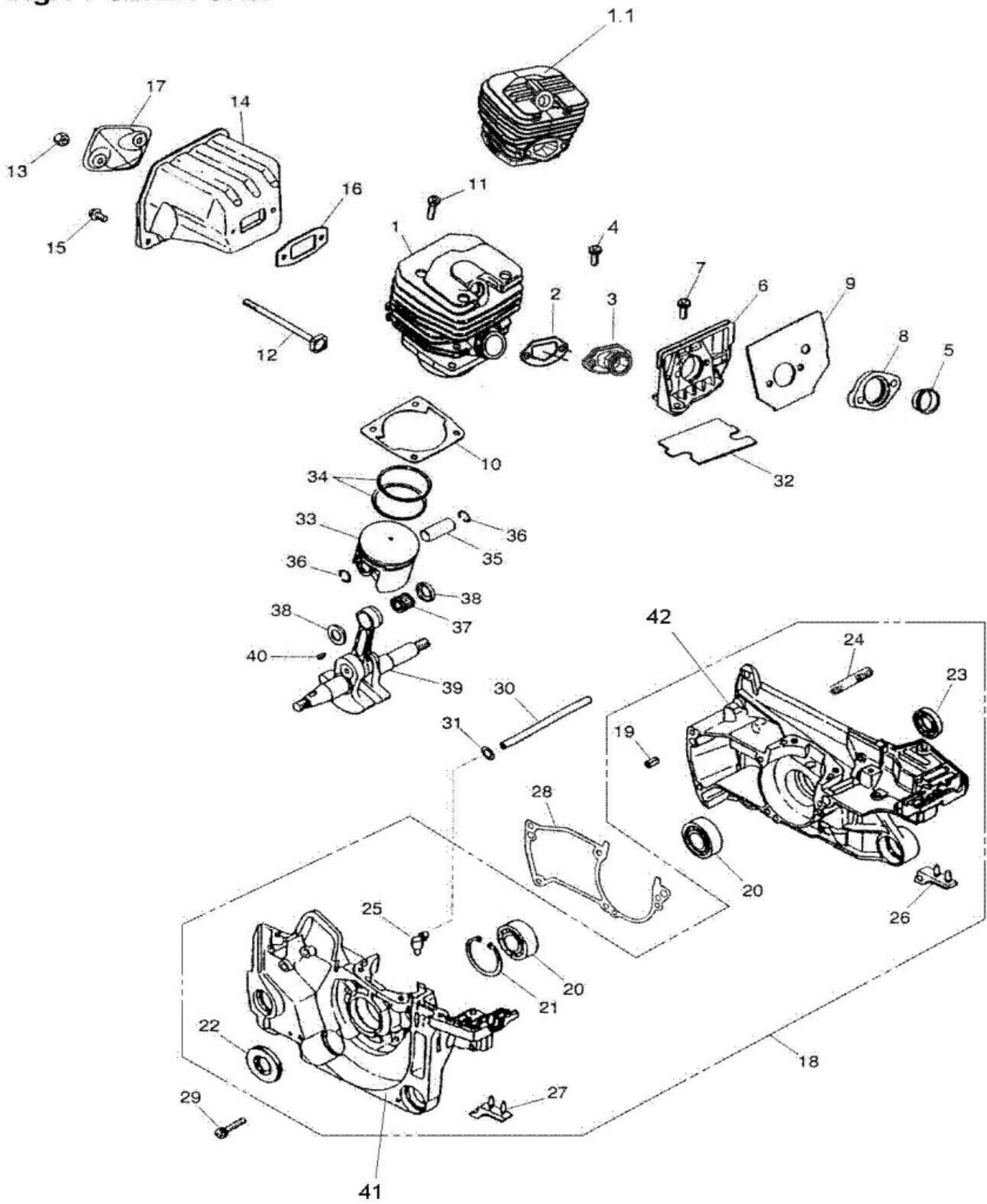


Fig.1 POWER UNIT CS52 (欧V款)

NO	Code	Part name	Part English name	Qty	
1	02.01.000122	气缸	Cylinder	1	∅46
2	07.01.0290	进气管纸垫	Inlet pipe gasket	1	
3	03.01.0010	进气管组件	Inlet pipe assembly	1	
4	01.01.0970	十字螺钉M5*14	phillips screw M5*14	2	
5	05.02.0130	进气管衬圈	inner guide	1	
6	04.01.0400	化油器支架	Carburetor bracket	1	
7	01.01.0501	螺钉M5*14	screw M5*14	2	
8	04.01.0410	进气管法兰	spacer	1	
9	07.01.0280	化油器支架纸垫	bracket gasket	1	
10	07.01.0300	气缸纸垫	cylinder gasket	1	
11	01.01.0523	晋亿螺钉M5*20	screw	4	
12	01.01.0300	方头螺栓M5*84	square head stud	2	
13	01.02.0111	六角法兰面防松螺母	hex nut	2	
14	05.02.0167	低排消音器	muffler	1	52
15	01.01.0491	螺钉M5*12	screw M5*12	2	
16	04.01.0330	消音器纸垫	muffler gasket	1	
17	05.02.0160	消音器盖板	muffler cover	1	
18		箱体总成	crank case ass'y	1	
19	01.05.0120	圆柱销∅5*8	spring pin	3	
20	01.06.0041	轴承6202/P6	bearing	2	
21	01.04.0210	∅35内卡	snap ring	1	
22	03.08.0060	油封15*35*4.5	seal	1	
23	03.08.0050	油封15*28*4.5	seal	1	
24	01.01.0370	双头螺栓M8*42	threaded stud	2	
25	05.13.0130	负压管接头	elbow	1	
26	03.01.0120	右箱减震块	Right stopper	1	
27	03.01.0110	左箱减震块	Left stopper	1	
28	07.01.0310	箱体纸垫	crank case gasket	1	
29	01.01.0542	螺钉M5*30	screw	5	
30	03.01.0060	负压管	pipe	1	
31	05.03.0100	负压管卡箍	clip	1	
32	04.01.0320	曲轴箱隔热垫	mat	1	
33	02.08.0096	活塞部件	Piston unit	1	∅46
34	05.07.0094	活塞环	Piston Ring	2	∅46
35	02.08.0077	活塞销	pstion pin	1	45/52
36	02.08.9021	活塞销卡簧	snap ring	2	
37	01.06.0090	滚针K111512.5	needle bearing	1	
38	01.07.0180	减磨垫	washer	2	45/52
39	05.04.0080	曲轴连杆部件	crank shaft	1	52
40	01.05.0010	半圆键3*10*3.7	key 3*10*3.7	1	
41	02.02.000101	左曲轴箱	Left crankcase	1	52
43	02.02.0240-1	右曲轴箱	right crankcase	1	52

CS45L/52L/58L

CS52 (欧V款)

Fig.2 IGNITION, STARTING

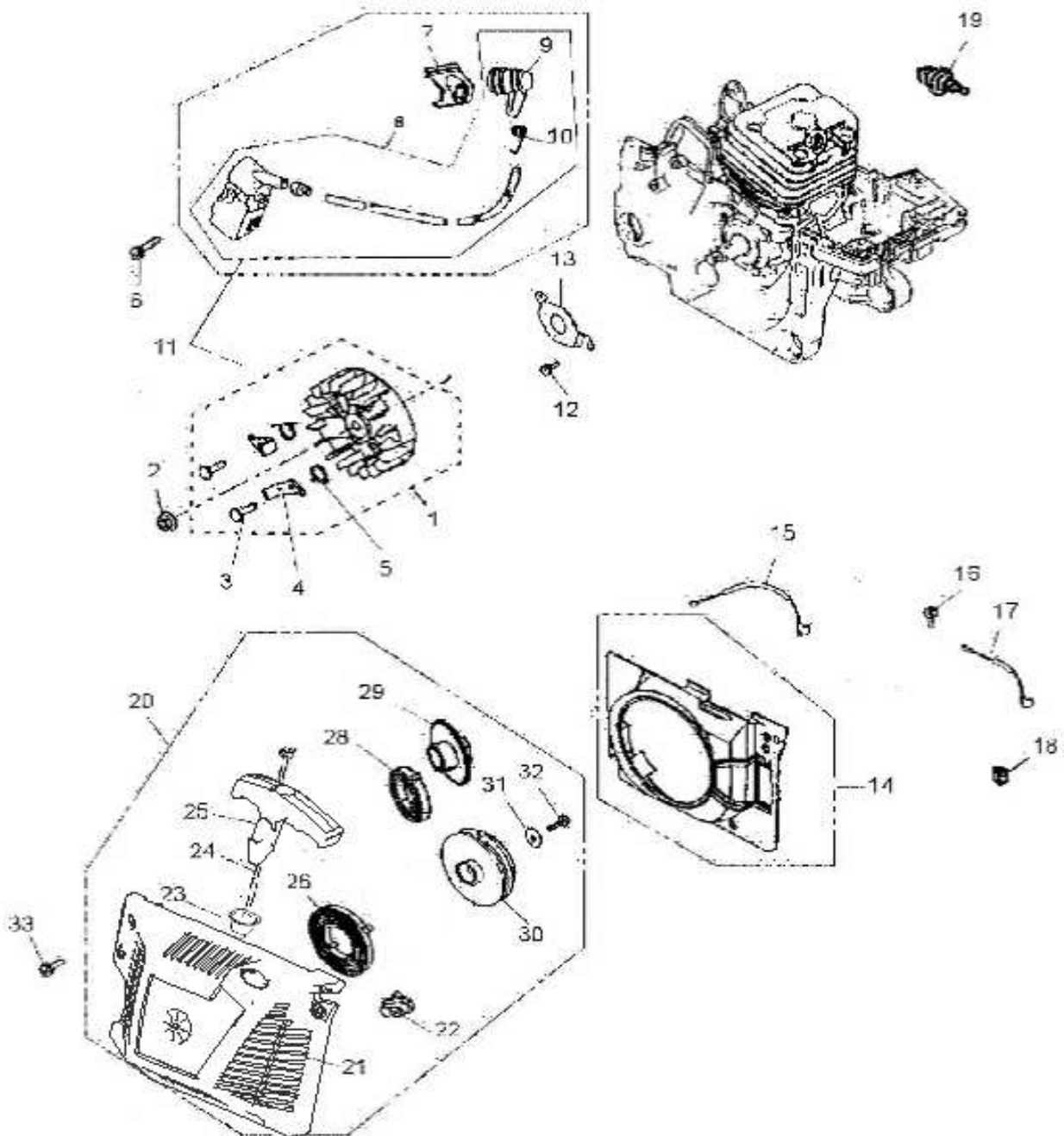


Fig.2 IGNITION, STARTING CS52 (欧V款)

NO	Code	Part name	Part English name	Qty	
1	02.03.0060	磁电机	rotor ass'y	1	
2	01.02.0061	法兰面防松螺母M8*1	nut	1	
3	02.03.0068	磁电机拨爪螺钉	screw	2	
4	02.03.0069	磁电机拨爪	paw	2	
5	02.03.0071	磁电机拨爪弹簧	ring	2	
6	01.01.0580	螺钉M5*20	screw	2	
7		点火器帽护套	Igniter cap sheath	1	
8		点火器	coil ass'y	1	
9		点火器帽	plug cap	1	
10	02.03.0162	点火器钢丝扣	spring	1	
11	02.03.0154	点火系统总成	ignition system ass'y	1	
12	01.01.0390	螺钉M4*8	screw	2	
13	05.02.0140	油封压板	plate	1	
14	YJ.01.0450	导风罩	Wind shield	1	
15	02.03.01701	熄火线	Flameout line	1	
16	01.01.0481	螺钉M5*10	screw	1	
17		接地线	ground wire	1	
18	07.99.0170	熄火开关	Flameout switch	1	
19	05.08.0091	火花塞LR8RTF	Spark plug LR8RTF	1	
20		起动机总成	Starter assembly	1	
21		起动机罩	Starter cover	1	
23	05.02.0240	起动机绳套	Starter sleeve	1	
24	07.99.0190	起动机拉绳	Starter drawstring	1	
25	YJ.01.000504	起动机手柄	Starter handle	1	
26	05.03.0122	起动机卷簧	Starting coil spring	1	
28	05.03.01216	绳轮弹簧	Rope spring	1	
29	YJ.01.0612	绳轮盖	Rope cover	1	
30	YJ.01.1123	起动机绳轮	Starter sheave	1	
31	01.04.0061	平垫片5*16*1.5	Flat gasket 5*16*1.5	1	
32	01.03.0143	十字槽盘头螺钉M5×14	Cross recessed pan head screws M5×14	1	
33	01.01.0512	组合螺钉M5*16[白	Combination screw M5*16	4	

CS45L/52L/58L

CS52 (欧V款)

Fig.3 HANDLE

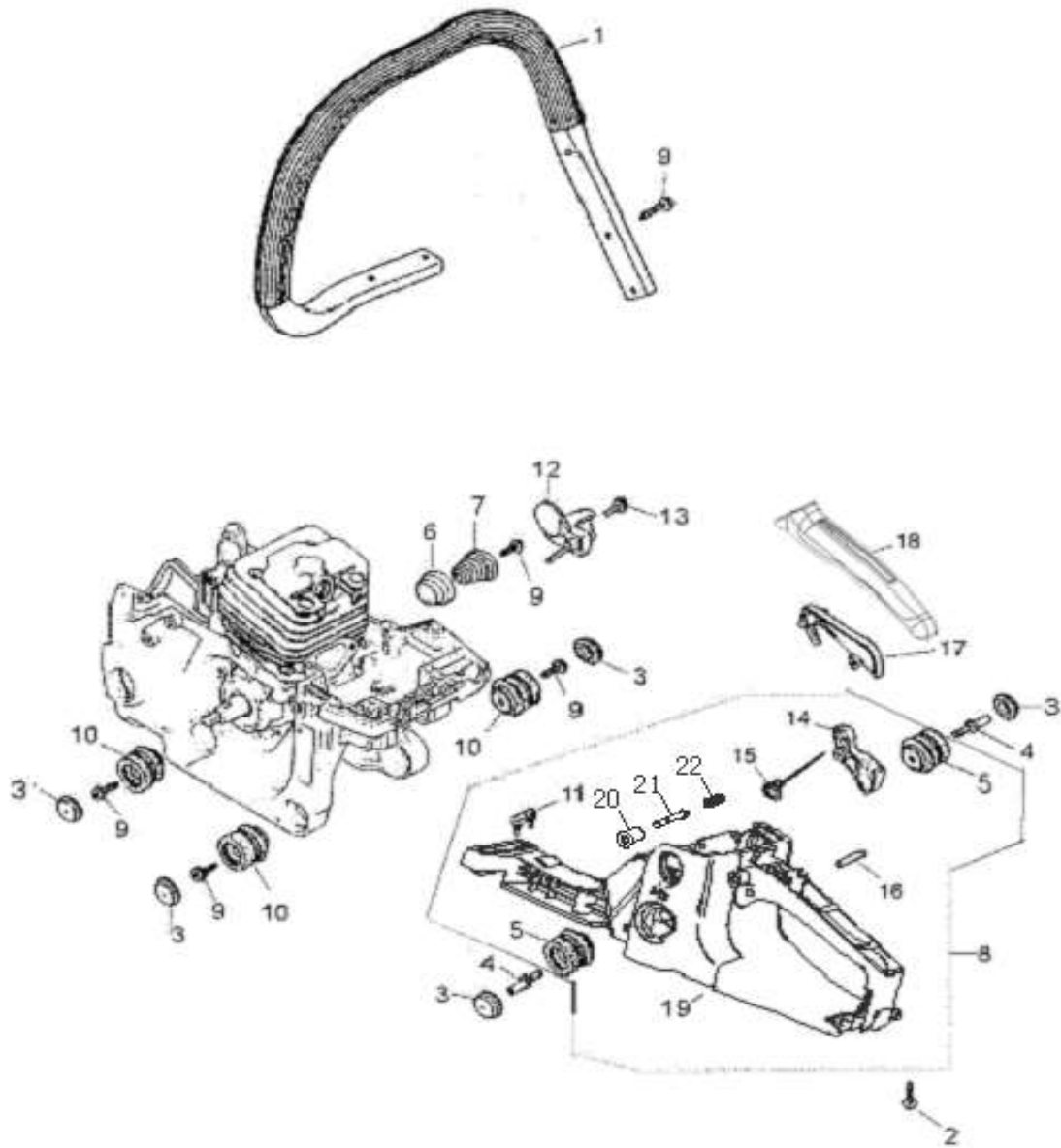


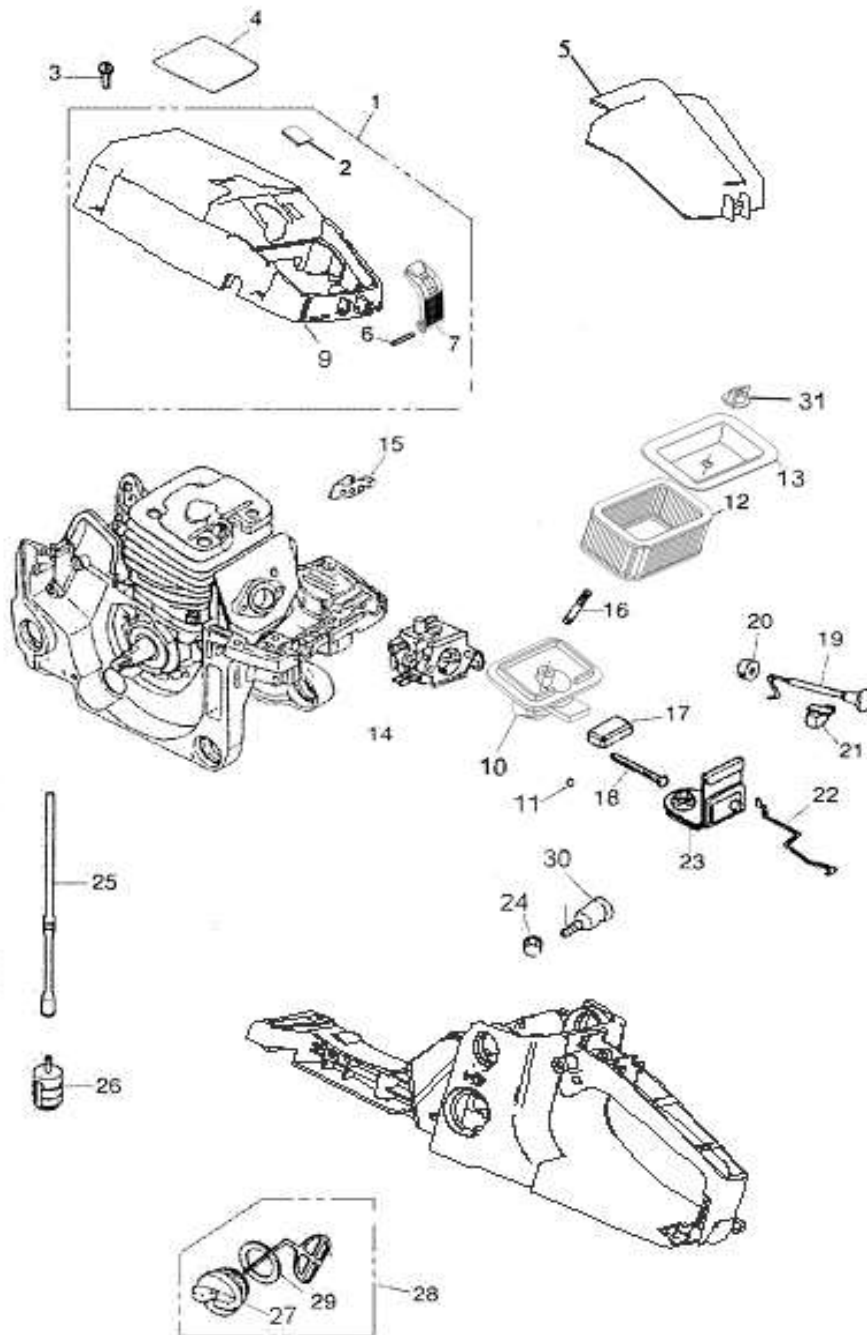
Fig.3 HANDLE CS52 (欧V款)

NO	Code	Part name	Part English name	Qty	
1	02.11.0084	提把	handle	1	
2	01.03.0160	自攻螺钉ST5*16	tapping screw	1	
3	YJ.01.0300-2	减震套盖	cap	5	
4	01.07.0100	油箱减震螺钉M5*14	screw M5*14	2	
5	03.01.0230	油箱减震	short damper	2	
6	YJ.01.0420	塔形弹簧座	spacer	1	
7	05.03.0080	塔形弹簧	spring	1	
8	YJ.94.003035	油箱总成	tank complete	1	
9	01.03.0142	自攻螺钉ST5*14	tapping screw	8	
10	03.01.0070	箱体减震套	Box shock absorber	3	
11	03.01.0220	双钉减震	Shock absorber nail	1	
12	YJ.01.0440	挡链块	chain catcher	1	
13	01.01.0501	螺钉M5*14	screw M5*14	1	
14	YJ.01.0340-8	扳机	throttle lever	1	
15	05.03.0140	扳机扭簧	throttle spring	1	
16	01.05.0160	圆柱销 $\phi$ 6*25	Cylindrical pin	1	
17	YJ.01.0360-4	扳机控制臂	Trigger control arm	1	
18	YJ.01.0000179	手柄盖	grip cover	1	
19	YJ.01.0000623	油箱	fuel tank	1	

CS45L/52L/58L

CS52 (欧V款)

Fig.4 FUELING SYSTEMS



## 气缸罩组件

Fig.4 FUELING SYSTEM CS52 (欧V款)

NO	Code	Part name	Part English name	Qty	
1		气缸罩组件	cylinder cover kit	1	
2	03.01.0141	气缸罩胶塞	cylinder head cove rubber plug	1	
3	01.01.0512	螺钉M5*16[白]	screw	5	
4		气缸罩标贴	cylinder head cove Label	1	
5		空滤器罩	Air filter cover	1	
6	01.05.0060	圆柱销3*25	Cylindrical pin 3*25	1	
7		空滤器罩扣	Hood buckle for air filter	1	
9		气缸罩	cylinder cover	1	
10	02.11.0140	进气弯管	inlet elbow	1	
11	01.04.0160	弹垫 $\varnothing$ 5	spring washer	2	
12	07.99.0080	空滤器(圆角、皱)	filter (Rounded corners, wrinkle)	1	5410/2520
14	02.04.0104	化油器MP16B25(不带油泡)	carburetor	1	52
15	03.01.0090	LH1护套	sheath	1	
16	01.01.0370	双头螺栓M5*38	stud bolts	1	
17	03.01.0020	进气弯管减震	intake elbow	1	
18	01.01.0580	内六角螺钉M5*50	Internal hexagonal screw	2	
19	YJ.01.3150-2	风门拉杆	Throttle tie rod	1	
20	03.01.0050	风门拉杆胶套	Throttle tie rod sleeve	1	
21	03.01.0080	风门拉杆减震块	Damper strut damping component	1	
22	05.03.0150	油门推杆	Throttle push rod	1	
23	03.01.0160	防尘胶块	Dustproof rubber component	1	
24	03.01.0210	平衡器座	balancer stand	1	
25	03.01.0200	燃油管	fuel pipe	1	
26	07.99.0110	燃油滤芯	fuel filter	1	
27		燃油箱盖	Fuel tank cap	1	
28		燃油箱盖组件	Fuel tank cap assembly	1	
29	03.01.0172	燃油箱盖密封垫	Fuel tank cap gasket	1	
30	07.99.0150	平衡器组件	Balancer assembly	1	
31	YJ.01.1130-1	空滤器锁母	Air filter lock net	1	5410

CS45A/52A/58A

CS52 (欧V款)

Fig.5 OIL SYSTEM, CLUTCH

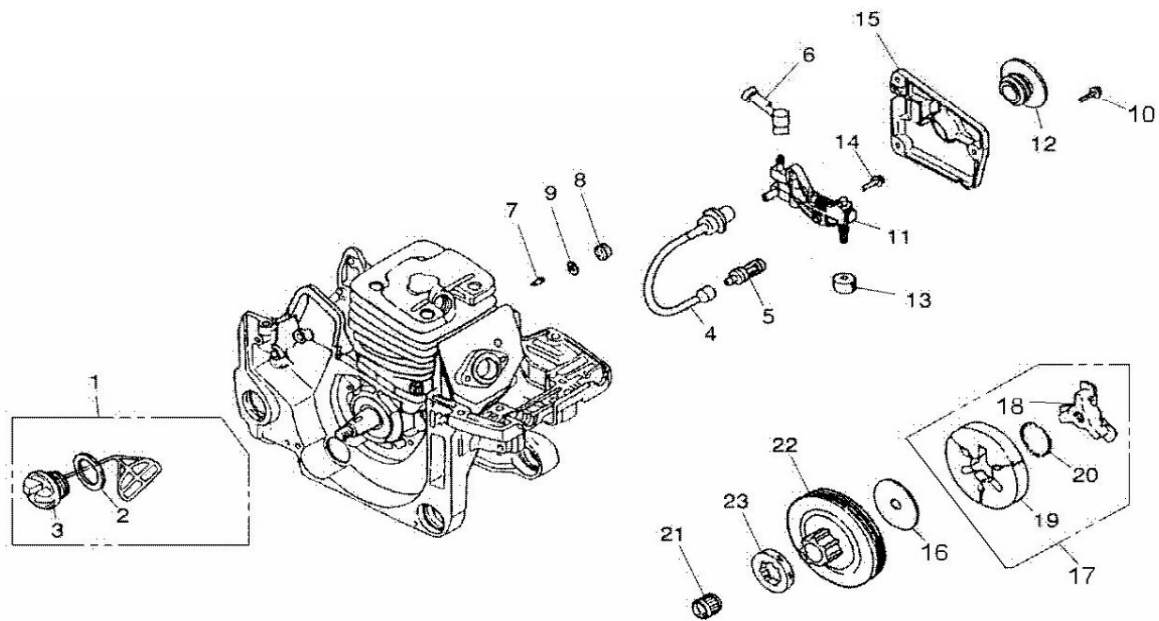


Fig.5 OIL SYSTEM, CLUTCH CS52 (欧V款)

NO	Code	Part name	Part English name	Qty	
1		机油箱盖组件	oil cap ass'y	1	
2	03.01.0100	机油箱盖密封垫	Oil tank cap gasket	1	
3		机油箱盖	Fuel tank cap	1	
4	03.01.0180	机油进油管	Oil inlet pipe	1	
5	07.99.0120	机油滤	Oil filter	1	
6	03.01.0190	喷油嘴	Injector	1	
7	03.01.0130	机油箱通气嘴	Oil tank vent	1	
8	05.03.0090	通气嘴钢丝挡圈	Vent wire retaining ring	1	
9	07.99.0050	通气孔海绵	Vent sponge	1	
10	01.01.0410	螺钉M4*10	screw	3	
11	02.11.0120	机油泵	Oil pump	1	
12	04.01.0480	蜗杆	Worm	1	
13	07.99.0040	机油泵海绵	Oil pump sponge	1	
14	01.01.0430	螺钉M4*14	screw	2	
15	YJ.01.0490	机油泵盖	Oil pump cover	1	
16	05.02.0150	离合器垫片	Clutch gasket	1	
17	05.01.0040	离合器	clutch	1	
18		离合器支撑架	Clutch bracket	1	
19		离合器蹄块	Clutch shoe block	3	
20		离合器弹簧	Clutch spring	1	
21	01.06.0100	滚针K121514.5	Kingpin K121514.5	1	
22	05.13.0110	被动盘	clutch drum	1	
23	05.13.0170	链轮	rim	1	0,325
	05.13.0180	链轮3/8	rim 3/8	1	7520

CS45L/52L/58L

CS52 (欧V款)

Fig.6 BREAKING SYSTEMS

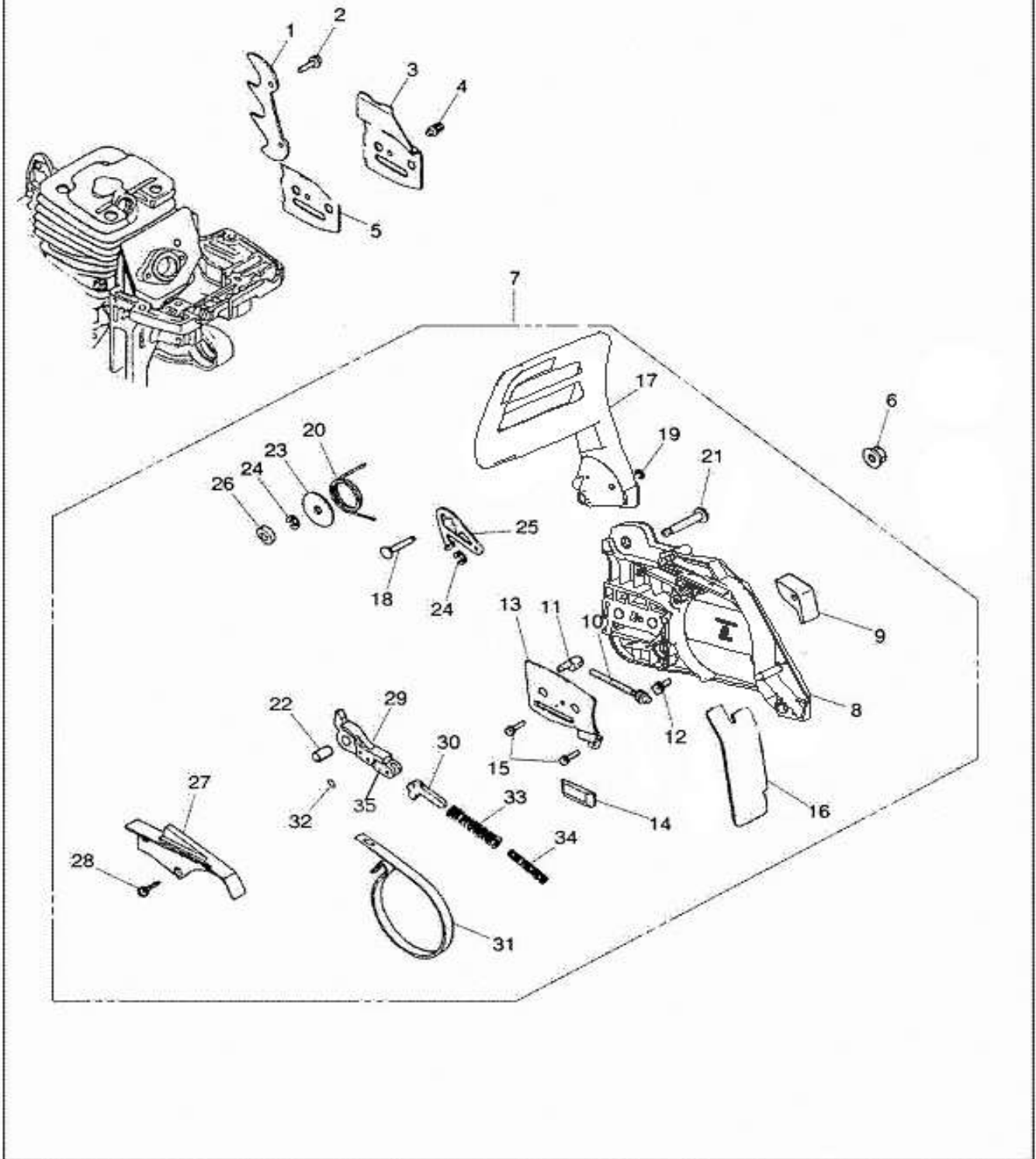


Fig.6 BREAKING SYSTEM CS52 (欧V款)

NO	Code	Part name	Part English name	Qty	
1	05.02.0190	插木齿	bumper	1	
2	01.01.0501	螺钉M5*14	screw	2	
3	05.02.0210	出油口挡板	baffle plate	1	
4	01.01.0900	十字螺钉M4*6	Phillips screw M4*6	1	
5	07.01.0341	出油口纸垫【3孔】T	Paper mat for oil outlet	1	
6	01.02.0100	法兰面加厚螺母M8	Nut M8	2	
7		刹车板总成	Brake Plate Assembly	1	
8		右侧盖组件	Right cover assembly	1	
9	03.01.0260	橡胶挡块	刹车内弹簧		
10	01.07.0220	涨紧器螺杆	Tightener screw	1	
11	01.07.0235	涨紧销	nut	1	
12	01.07.0230	涨紧齿轮	Tightener gear	1	
13	05.02.0200	涨紧器盖板	Tightener cover plate	1	
14	YJ.01.0470	导链板	Guide plate	1	
15	01.03.0060	自攻螺钉ST4*8	etmetal screws ST4*8	2	
16	03.01.0250	挡油板	protector	1	
17		前挡板	front guard	1	
18	01.07.0130	限位销	pin	1	
19	01.04.03000	开口挡圈 $\varnothing$ 3	ring	2	
20	05.03.0180	刹车扭簧	spring	1	
21	01.07.0120	前挡板销	Front bezel pin	1	
22	01.07.0110	销轴隔套	Pin spacer	1	
23	01.04.0100	平垫片6*18*1.2	washer	2	
24	01.04.0270	开口挡圈 $\varnothing$ 4	ring	2	
25	05.02.0180	限位板	Limiting plate	1	
26	03.01.0240	橡胶挡圈	Rubber O-sealing Ring	1	
27	YJ.01.0910	刹车弹簧盖	Brake spring cover	1	
28	01.03.0071	自攻螺钉ST4*10	etmetal screws ST4*10	3	
29	YJ.01.0950	主杠杆	Main lever	1	
30	05.02.0170	刹车控制杆	Brake lever	1	
31	05.02.0173	刹车带	Brake belt	1	
32	01.05.0030	圆柱销 $\varnothing$ 3*8	Cylindrical pin	1	
33	05.03.0160	刹车弹簧	Brake spring	1	
34	05.03.0170	刹车内弹簧	Brake inner spring	1	
35	YJ.01.0960	副杠杆	Secondary lever	1	