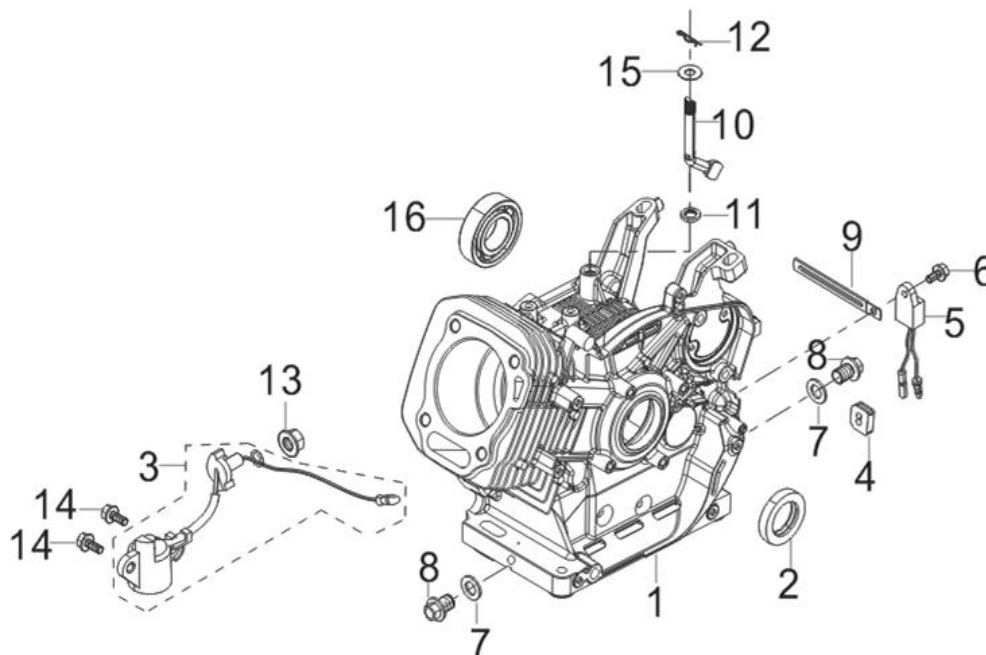


RG6.5-130Q-Z-2 (21906075)

FIG.1 CRANKCASE. (E01)

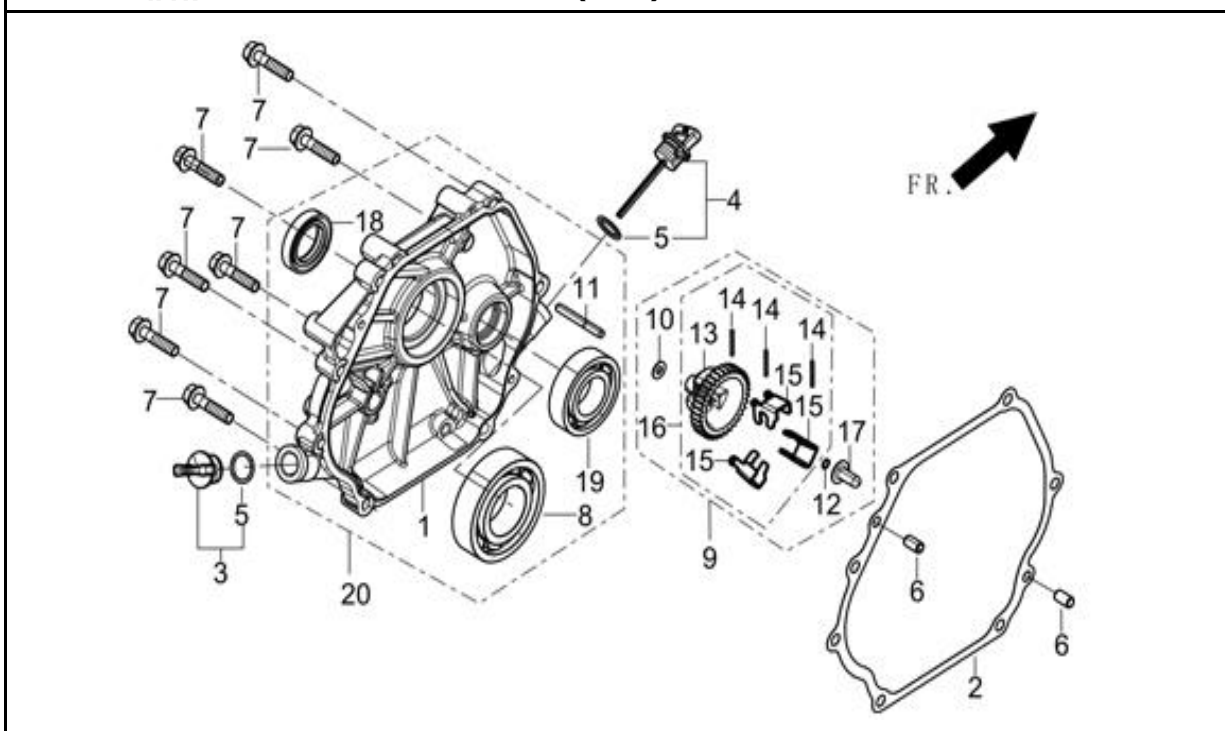
图1: 曲轴箱组件(E01)



REF.NO. 序号	PART NO 物料代码	DESCRIPTION 英文名	Q'TY 数量	包装数
E01-1	11310-Z0J0510-0BA0	CRANKCASE SUBASSEMBLY.	1	1
E01-2	90682-Z0J0110-00A0	SEAL, OIL	1	1
E01-3	37060-Z080120-00A0	SENSOR, ENGINE OIL	1	1
E01-4	28101-Z080110-00A0	PLUG, RUBBER	1	1
E01-5	37050-Z010210-00A0	PROTECTOR, OIL	1	1
E01-6	90001-0612-01A0	BOLT	1	1
E01-7	90412-Z080110-00A0	WASHER, FLAT	2	1
E01-8	11007-Z080110-00A0	BOLT, DRAIN PLUG	2	1
E01-9	90684-Z030120-00A0	CLIP	1	1
E01-10	16061-Z100110-00A0	ARM, GOVERNOR	1	1
E01-11	90682-Z100210-00A0	SEAL, OIL	1	1
E01-12	90501-Z010110-00A0	PIN	1	1
E01-13	90305-Z010210-01A0	NUT	1	1
E01-14	90001-0616-01A0	BOLT	2	1
E01-15	90412-Z080210-00A0	WASHER, FLAT	1	1
E01-16	90548-0202-CLA0	BEARIN, DEEP GROOVE BALL	1	1

FIG.2 COVER SUBASSEMBLY, CRANKCASE / GEAR ASSY, GOVERNOR (E02)

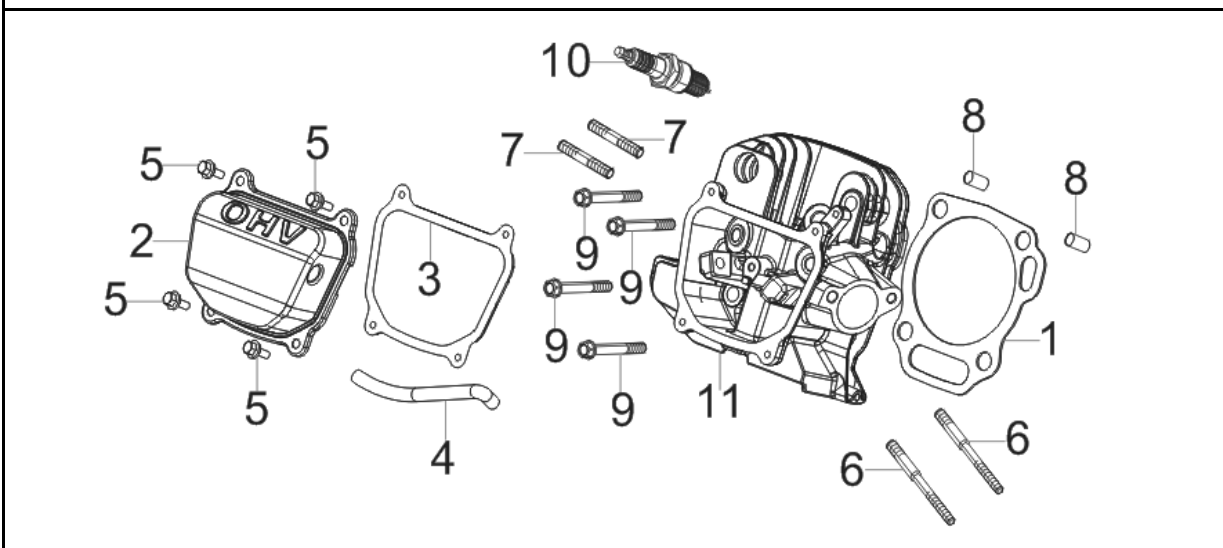
图2：曲轴箱盖部件 + 调速齿轮部件(E02)



REF.NO. 序号	PART NO 物料代码	DESCRIPTION 英文名	Q'TY 数量	包装数
E02-1	11411-Z100710-0BA0	COVER, CRANKCASE	1	1
E02-2	11001-Z100220-00A0	GASKET, CRANKCASE	1	1
E02-3	15030-Z080130-Q2A0	PLUG SUBASSEMBLY, ENGINE OIL	1	1
E02-4	15010-Z080130-Q2A0	DIPSTICK SUBASSEMBLY, OIL	1	1
E02-6	90502-0812-00A0	PIN	2	1
E02-7	90001-0840-01A0	BOLT	7	1
E02-8	90547-0207-CLA0	BEARIN, DEEP GROOVE BALL	1	1
E02-9	16400-Z0Y0110-00A0	GEAR ASSY, GOVERNOR	1	1
E02-18	90682-Z100110-00A0	SEAL, OIL	1	1
E02-19	90548-0202-CLA0	BEARIN, DEEP GROOVE BALL	1	1

FIG.3 HEAD SUBASSEMBLY, CYLINDER / PLUG,SPARK (E03)

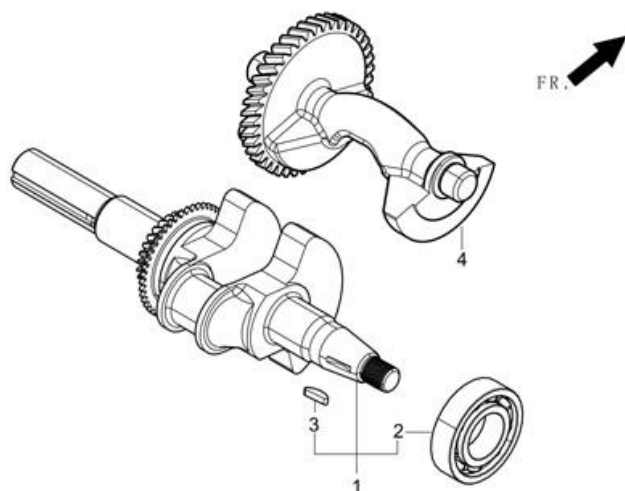
图3： 气缸头部件/火花塞 (E03)



REF.NO. 序号	PART NO 物料代码	DESCRIPTION 英文名	Q'TY 数量	包装数
E03-1	12131-Z190510-00A0	GASKET, CYLINDER HEAD	1	1
E03-2	12410-Z0J0210-00A0	COVER SUBASSEMBLY, CYLINDER HEAD	1	1
E03-3	12004-Z0J0510-00A0	GASKET, CYLINDER HEAD COVER	1	1
E03-4	17004-Z0J0110-00A0	TUBE, BREATHER	1	1
E03-5	90001-0614-01A0	BOLT	4	1
E03-6	90204-Z100210-00A0	BOLT	2	1
E03-7	90204-Z100320-00A0	BOLT	2	1
E03-8	90502-1220-00A0	PIN	2	1
E03-9	12003-Z080110-00A0	BOLT, CYLINDER HEAD	4	1
E03-10	30010-Z010110-00A0	PLUG, SPARK	1	1
E03-11	12140-Z0J0410-0BA0	HEAD SUBASSEMBLY, CYLINDER	1	1

FIG.4 ROD,CRANKSHAFT CONNETING (E04)

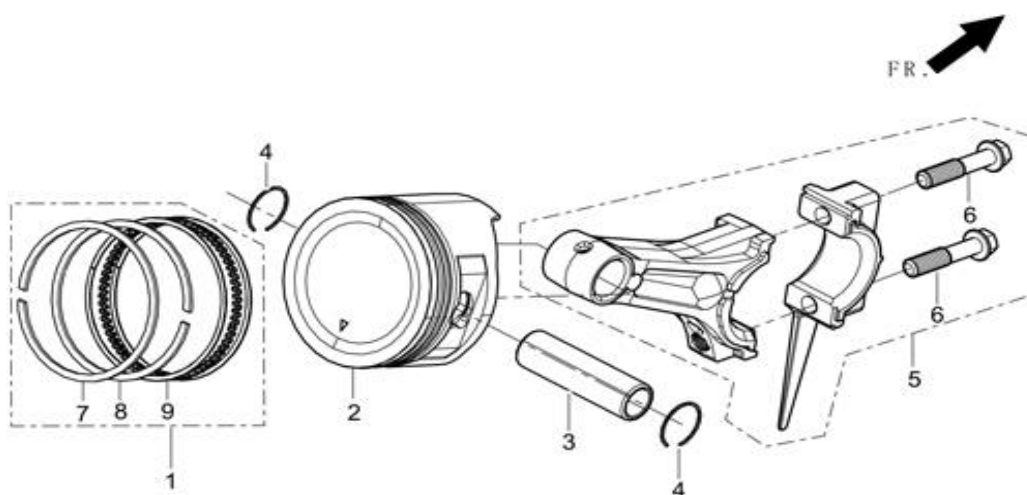
图4：曲柄连杆组件(E04)



REF.NO. 序号	PART NO 物料代码	DESCRIPTION 英文名	Q'TY 数量	包装数
E04-1	13300-Z0J0810-00A0	CRANKSHAFT ASSY.	1	1
E04-4	13400-Z190320-00A0	BALANCING SHAFT	1	1

FIG.5 RING SET,OIL / ROD,CRANKSHAFT CONNETING (E05)

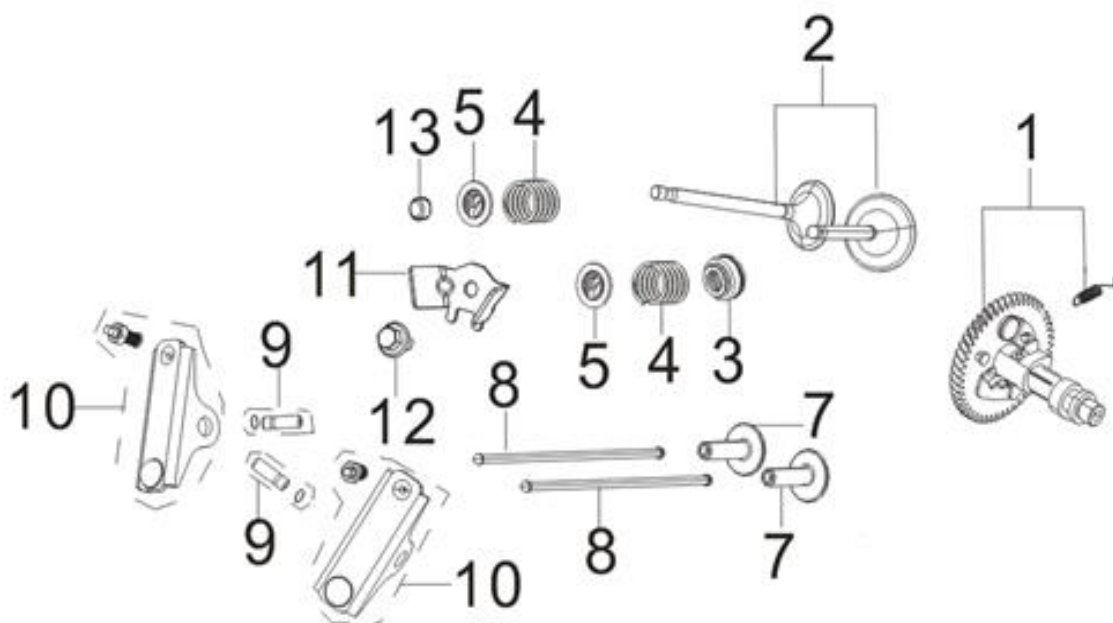
图5：油环组合/曲柄连杆组件 (E05)



REF.NO. 序号	PART NO 物料代码	DESCRIPTION 英文名	Q'TY 数量	包装数
E05-1	13200-Z0J0110-00A0	RING ASSY, PISTON	1	1
E05-2	13111-Z0J0110-00A0	PISTON	1	1
E05-3	13121-Z100110-00A0	PIN, PISTON	1	1
E05-4	13122-Z100110-00A0	CLIP, PISTON PIN	2	1
E05-5	13010-Z190120-00A0	ROD, CONNECTING	1	1

FIG.6 TRAIN,VALVE / CAMSHAFT SUBASSEMBLY 配气机构组件/凸轮轴 (E06)

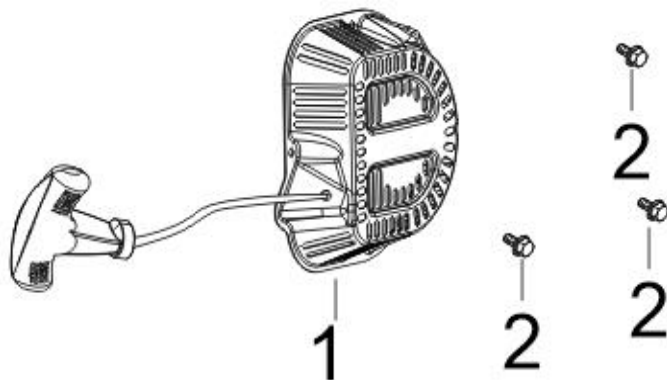
图6： 配气机构组件/凸轮轴 (E06)



REF.NO. 序号	PART NO 物料代码	DESCRIPTION 英文名	Q'TY 数量	包装数
E06-1	14200-Z1E0110-00A9	CAMSHAFT ASSY.	1	1
E06-2	12110-Z0J0310-00A0	VALVES SET	1	1
E06-3	12101-Z810110-00A0	GUIDE, SEAL	1	1
E06-4	12103-Z990110-00A0	SPRING, VALVE	2	1
E06-5	12107-Z010110-00A0	RETAINER, EXHAUST VALVE	2	1
E06-7	14081-Z080110-00A0	TAPPET, VALVE	2	1
E06-8	14070-Z0J0110-00A0	LIFTER SUBASSEMBLY, VALVE	2	1
E06-9	14318-Z990110-00A0		2	1
E06-10	14310-Z0J0110-00A0	ROCKER, VALVE	2	1
E06-11	12419-Z950210-00A0		1	1
E06-12	90007-0612-A108	BOLT	1	1
E06-13	12104-Z010110-00A0	ROTATOR, VALVE	2	1

FIG.7 STARTER,RECOIL (E07)

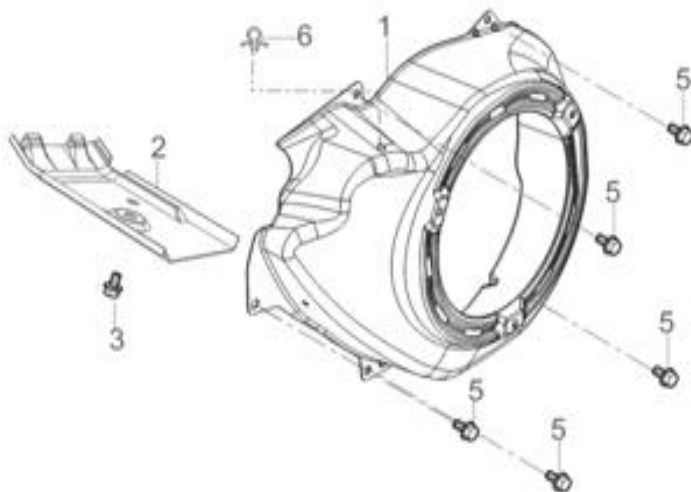
图7：手起动组件 (E07)



REF.NO. 序号	PART NO 物料代码	DESCRIPTION 英文名	Q'TY 数量	包装数
E07-1	28200-Z102210-JAA0	STARTER ASSY, RECOIL	1	1
E07-2	90001-0608-01A0	BOLT	3	1

FIG.8 SHROUD / SHIELD,LOWER (E08)

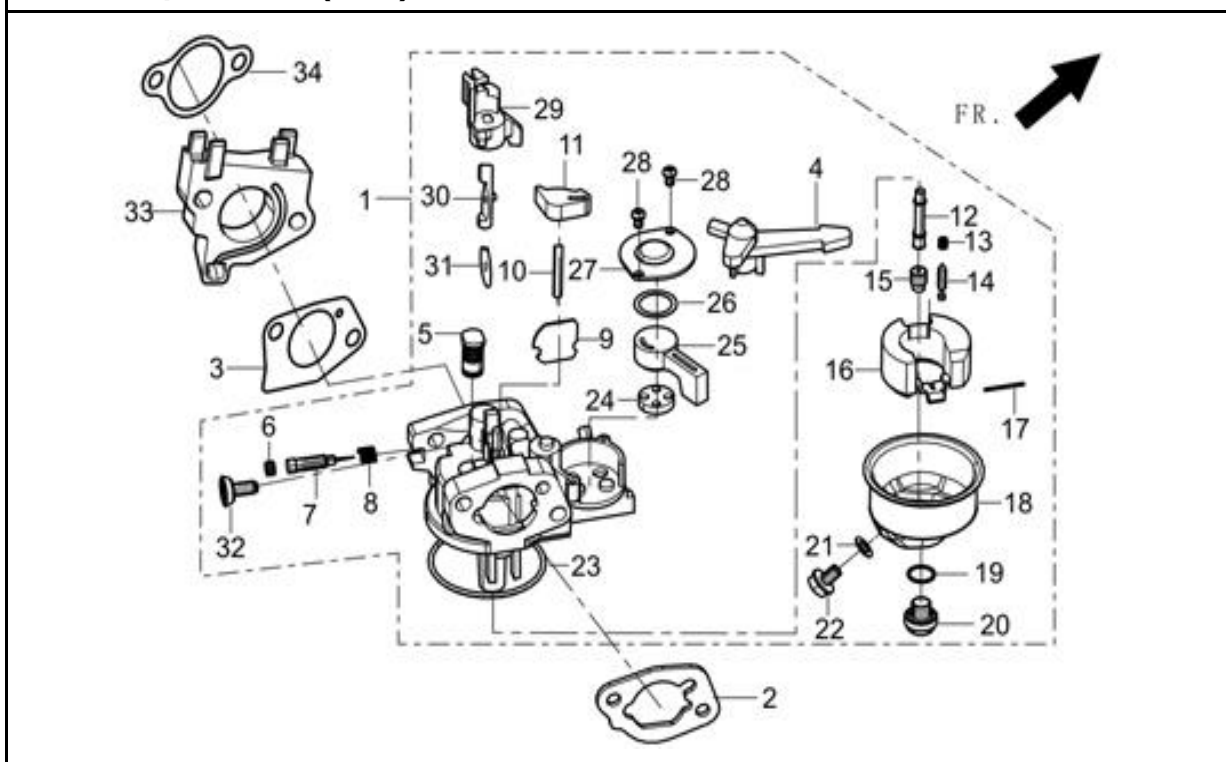
图8：缸体导风罩/下护罩 (E08)



REF.NO. 序号	PART NO 物料代码	DESCRIPTION 英文名	Q'TY 数量	包装数
E08-1	28110-Z100310-JAA0	SHROUD	1	1
E08-2	19304-Z100210-00A0	SHROUD, CYLINDER BODY	1	1
E08-3	90001-0612-01A0	BOLT	1	1
E08-5	90001-0612-01A0	BOLT	5	1
E08-6	90684-Z080110-00A0	CLIP	1	1

FIG.9 CARBURETOR ASSY. (E09)

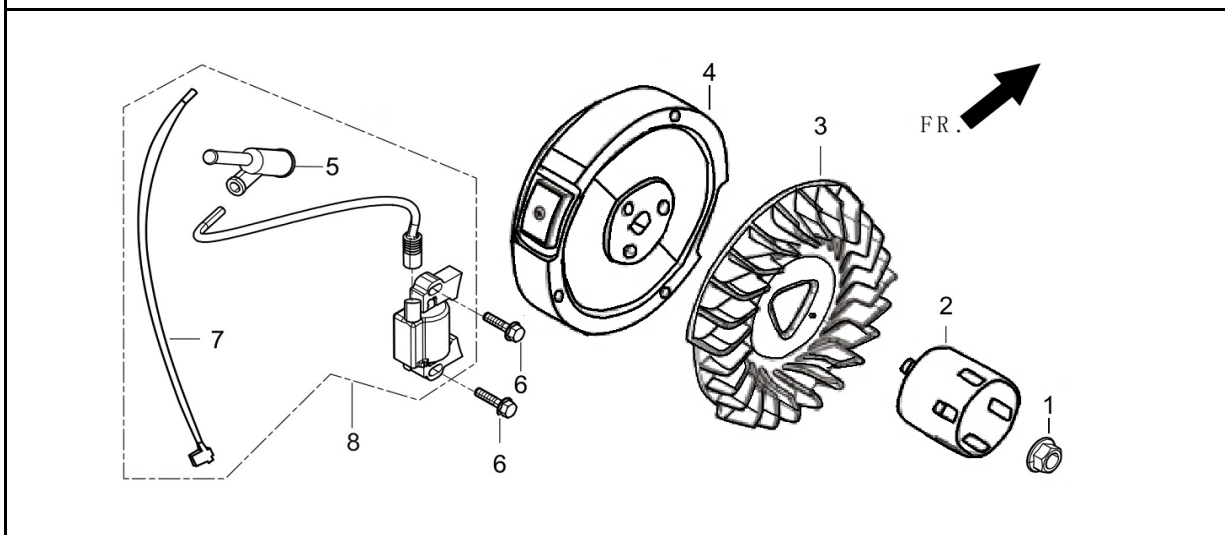
图9：化油器部件 (E09)



REF.NO. 序号	PART NO 物料代码	DESCRIPTION 英文名	Q'TY 数量	包装数
E09-1	16100-Z0J1510-00A0	CARBURETOR ASSY.	1	1
E09-2	17001-Z080210-00A0	GASKET, AIR CLEANER	1	1
E09-3	16001-Z100110-00A0	GASKET, CARBURETOR	1	1
E09-33	16003-Z100110-00A0	PLATE, CARBURETOR INSULATOR	1	1
E09-34	17002-Z100110-00A0	GASKET, INLET	1	1

FIG.10 FLYWHEEL / IMPELLER / STARTER PULLEY / IGNITION COIL (E10)

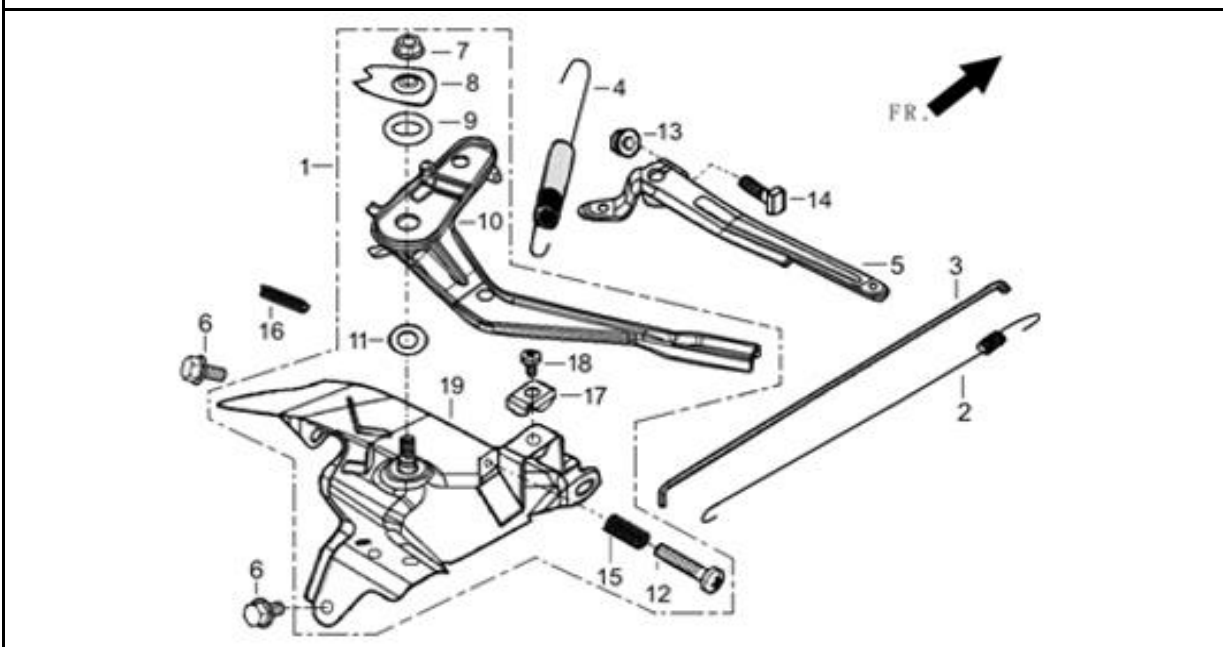
图10: 飞轮/叶轮/启动杯/点火线圈 (E10)



REF.NO. 序号	PART NO 物料代码	DESCRIPTION 英文名	Q'TY 数量	包装数
E10-1	13501-Z080110-00A0	NUT, FLYWHEEL	1	1
E10-2	28002-Z100210-00A0	PULLEY,STARTER	1	1
E10-3	19352-Z100210-00A0	IMPELLER	1	1
E10-4	13510-Z190910-00A0	FLYWHEEL SUBASSEMBLY	1	1
E10-6	90001-0628-01A0	BOLT	2	1
E10-8	30400-Z190210-00A0	COIL, IGNITION	1	1

FIG.11 CONTROL ASSY, THROTTLE (E11)

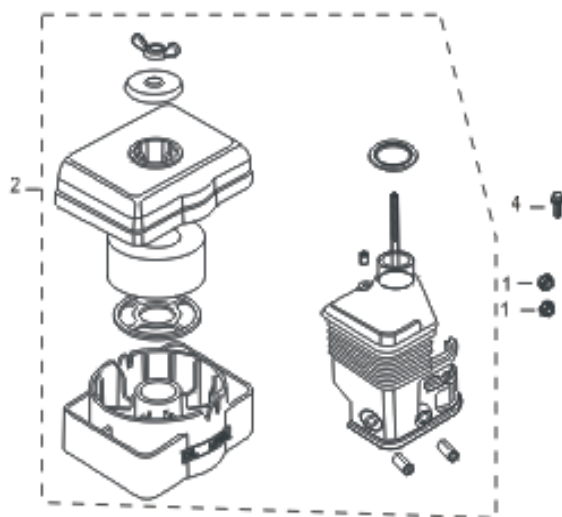
图11: 油门操纵部件 (E11)



REF.NO. 序号	PART NO 物料代码	DESCRIPTION 英文名	Q'TY 数量	包装数
E11-1	16520-Z0J1010-00A0	CONTROL ASSY, THROTTLE	1	1
E11-2	16012-Z080110-00A0	SPRING, THROTTLE VALVE RETURNING	1	1
E11-3	16062-Z100110-00A0	ROD, GOVERNEOR	1	1
E11-4	16063-Z0J0310-00A0	SPRING, GOVERNOR	1	1
E11-5	16070-Z0J0110-00A0	SUPPORT SUBASSEMBLY, GOVERNOR	1	1
E11-6	90001-0612-01A0	BOLT	2	1
E11-13	90305-0600-31A0	NUT	1	1
E11-14	16072-Z010110-00A0	BOLT, GOVERNOR SUPPORT	1	1

FIG.12 CLEANER, AIR 空滤器(F01)

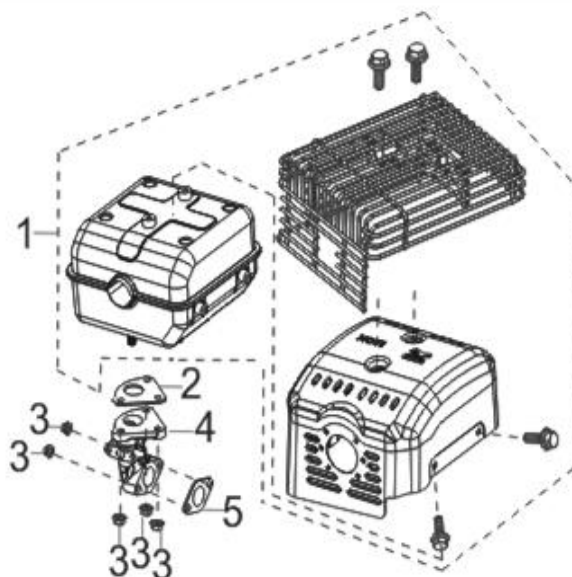
图12: 空滤器 (F01)



REF.NO. 序号	PART NO 物料代码	DESCRIPTION 英文名	Q'TY 数量	包装数
F01-1	90305-0600-31A0	NUT	2	1
F01-2	17100-Z101410-00A0	CLEANER, AIR	1	1
F01-4	90007-0620-A1A0	BOLT	1	1

FIG.13 MUFFLER ASSY.(F02)

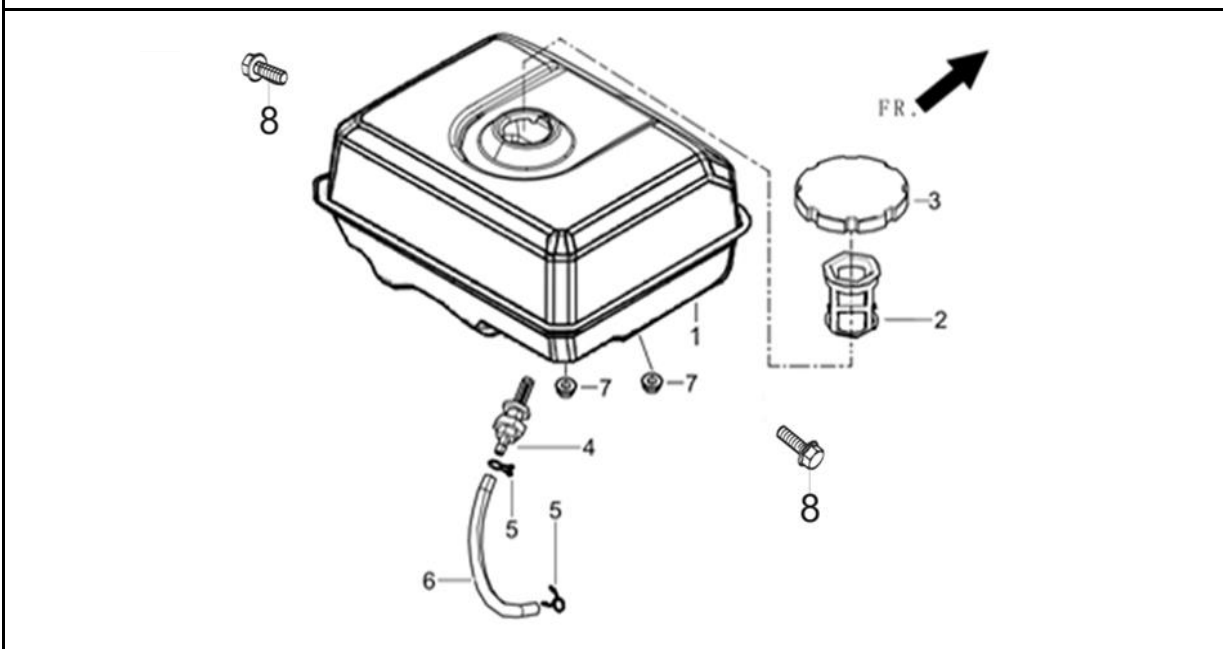
图13: 消声器部件 (F02)



REF.NO. 序号	PART NO 物料代码	DESCRIPTION 英文名	Q'TY 数量	包装数
F02-1	18100-Z101610-00A0	MUFFLER ASSY.	1	1
F02-2	18101-Z080110-00A0	GASKET, MUFFLER	1	1
F02-3	90305-0800-31A0	NUT	5	1
F02-4	18150-Z080210-00A0	PIPE, EXHAUST	1	1
F02-5	18001-Z190110-00A0	GASKET, EXHAUST OUTLET	1	1

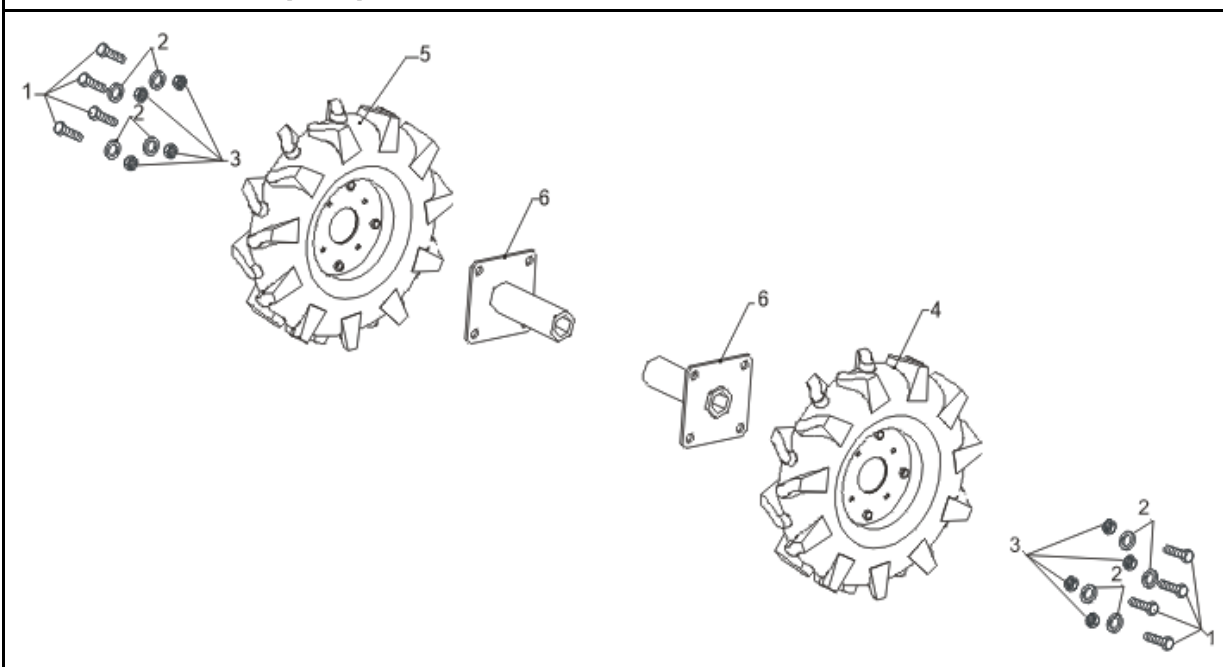
FIG.14 TANK ASSY, FUEL (F03)

图14: 油箱部件 (F03)



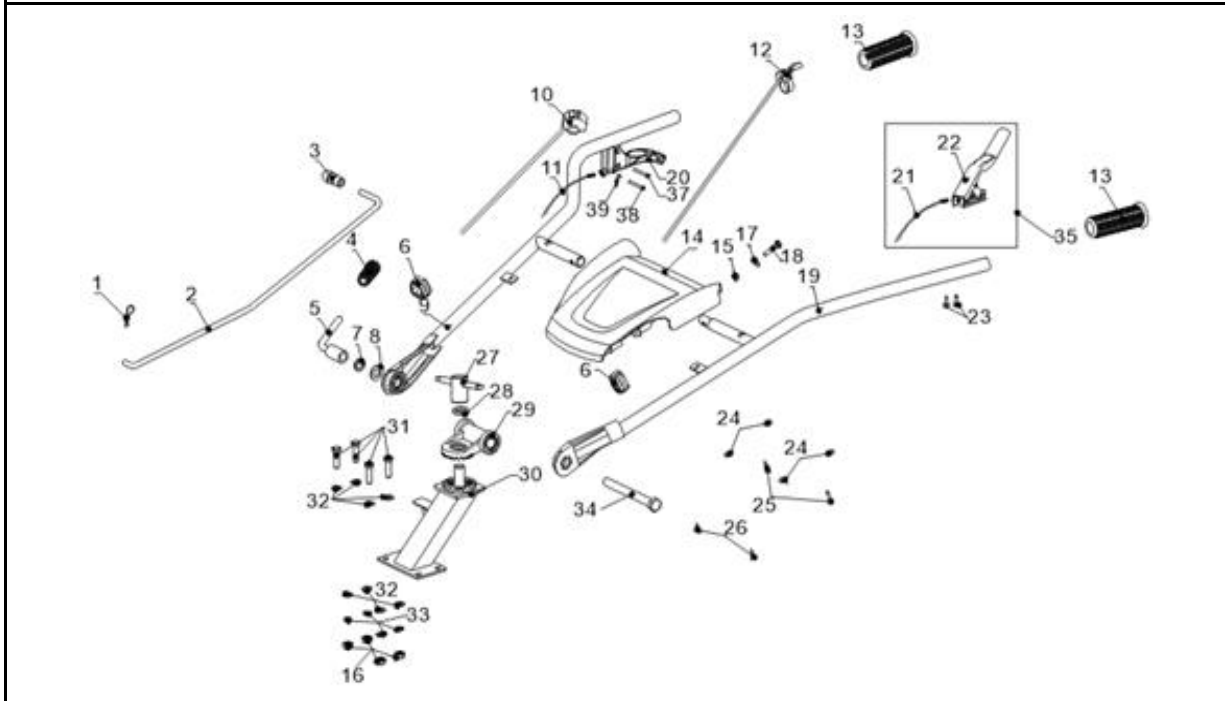
REF.NO. 序号	PART NO 物料代码	DESCRIPTION 英文名	Q'TY 数量	包装数
F03-1	16620-Z080410-YCAP	TANK, FUEL	1	1
F03-2	16652-Z010610-00A0	STRAINER, FUEL	1	1
F03-3	16730-Z300120-00A0	COVER, FUEL TANK	1	1
F03-4	16680-Z010110-00A0	OUTLET SUBASSEMBLY, FUEL TANK OIL	1	1
F03-5	90740-Z010510-00A0	COLLAR	2	1
F03-6	90686-Z520110-00A0	TUBE, FUEL	1	1
F03-7	90305-0800-31A0	NUT	2	1
F03-8	90001-0825-01A0	BOLT	2	1

FIG.15 后轮部分(F07)



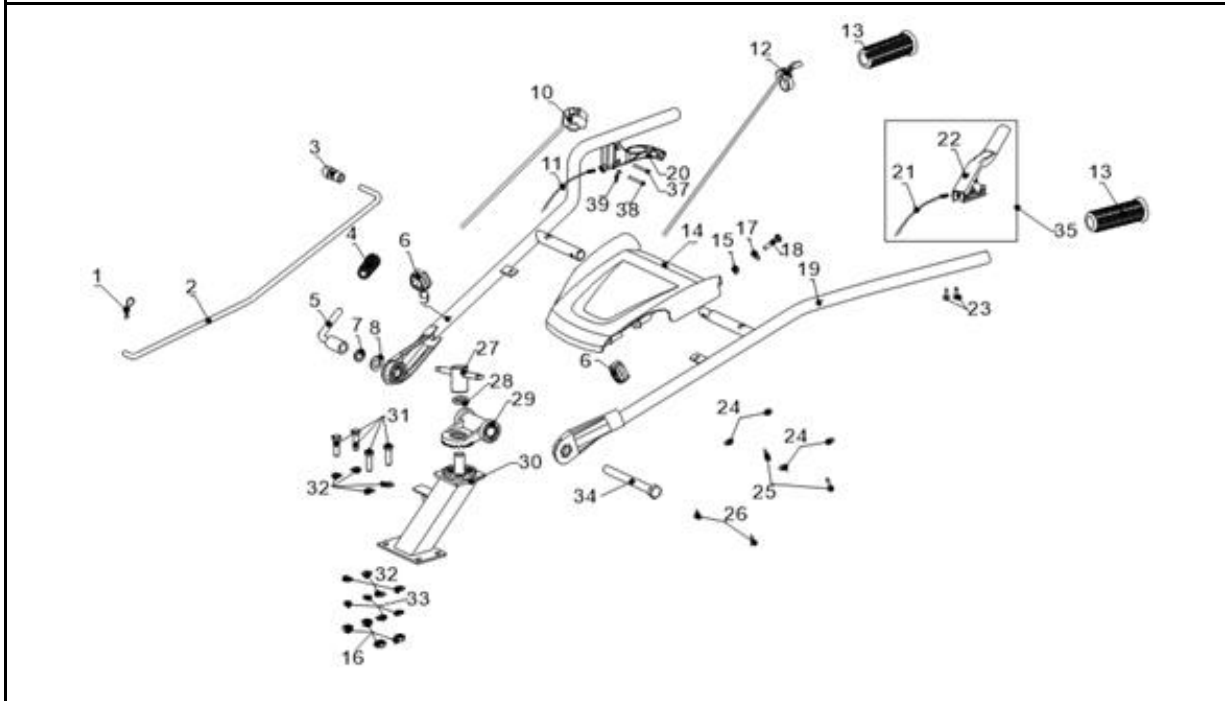
REF.NO. 序号	PART NO 物料代码	DESCRIPTION 英文名	Q'TY 数量	包装数
F07-1	90005-1025-0108		8	1
F07-2	90403-1000-0108	WASHER, FLAT	8	1
F07-3	90303-1000-3108	NUT	8	1
F07-4	76008-U090310-H300	WHEEL, TRANSPORTION	1	1
F07-5	76008-U090410-H300	WHEEL, TRANSPORTION	1	1
F07-6	42002-U090210-H300	SHAFT, REAR WHEEL	2	1

FIG.16 手把管部分 (F08) A



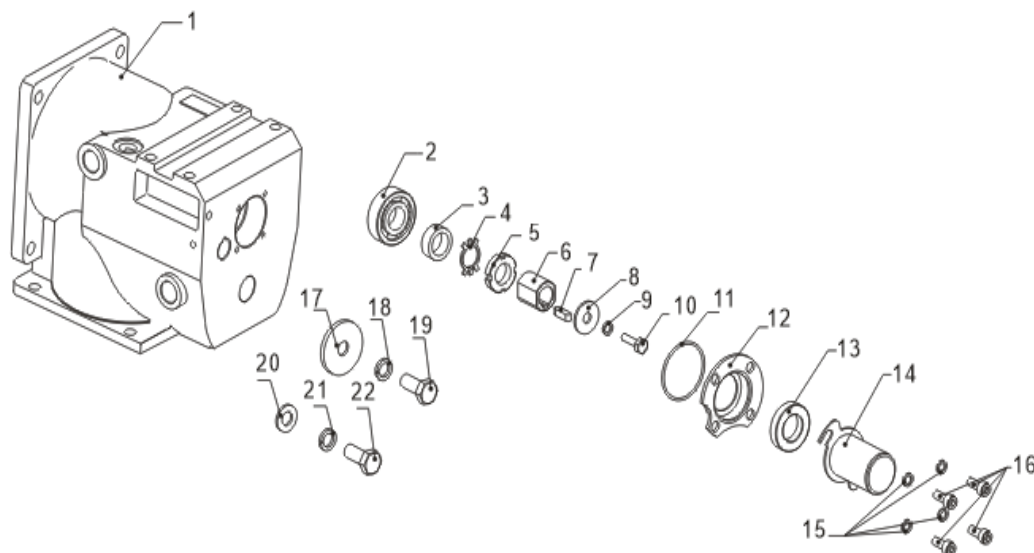
REF.NO. 序号	PART NO 物料代码	DESCRIPTION 英文名	Q'TY 数量	包装数
F08-1	90583-0238-01		1	1
F08-2	54205-U090110-0000		1	1
F08-3	54101-U080110-0000	SLEEVE, HANDLE RUBBER	1	1
F08-4	54101-U080110-0000	SLEEVE, HANDLE RUBBER	1	1
F08-5	54203-U080110-0000		1	1
F08-6	90684-U110110-0000	CLIP	2	1
F08-7	90403-1600-0108	WASHER, FLAT	1	1
F08-8	90408-1600-E108	WASHER, FLAT	1	1
F08-9	54110-U230610-YC00	HANDLE TUBE ASSY	1	1
F08-10	35540-U190210-0000	SWITCH SUBASSEMBLY, STOP ENGINE	1	1
F08-11	24006-U190111-0000	CABLE, REVERSE	1	1
F08-12	16550-U190110-0000		1	1
F08-13	54101-U060110-0000	SLEEVE, HANDLE RUBBER	2	1
F08-14	54125-U060110-Q200		1	1
F08-15	90325-0800-3108		1	1
F08-16	90303-1000-3108	NUT	4	1
F08-17	90406-0800-E108	WASHER, FLAT	1	1
F08-18	90001-0835-0108		1	1
F08-19	54110-U230510-YC00	HANDLE TUBE ASSY	1	1
F08-20	54035-U070410-H300		1	1
F08-23	90007-0630-A108	BOLT	2	1
F08-24	90406-0500-3108	WASHER, FLAT	4	1

FIG.16 手把管部分 (F08) B

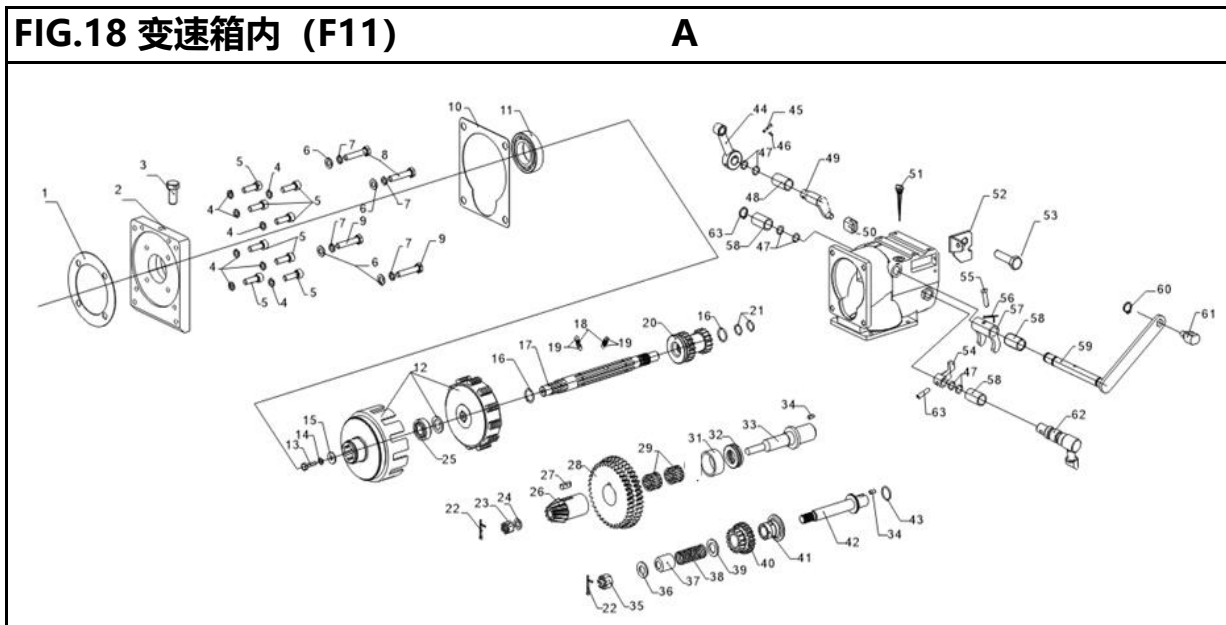


REF.NO. 序号	PART NO 物料代码	DESCRIPTION 英文名	Q'TY 数量	包装数
F08-25	90107-4819-0108	SCREW	2	1
F08-26	90107-4813-0108	SCREW	2	1
F08-27	54203-U290110-0000		1	1
F08-28	90403-2000-0108	WASHER, FLAT	1	1
F08-29	54206-U220210-YC00		1	1
F08-30	54200-U090210-YC00		1	1
F08-31	90005-1035-0108		4	1
F08-32	90408-1000-E108	WASHER, FLAT	8	1
F08-33	90403-1000-0108	WASHER, FLAT	4	1
F08-34	90004-U070110-01		1	1
F08-35	24510-U190111-RU00		1	1
F08-37	90504-0625-0108	PIN ROLL	1	1
F08-38	90504-U080110-0108	PIN ROLL	1	1
F08-39	90501-0220-0108	PIN	1	1

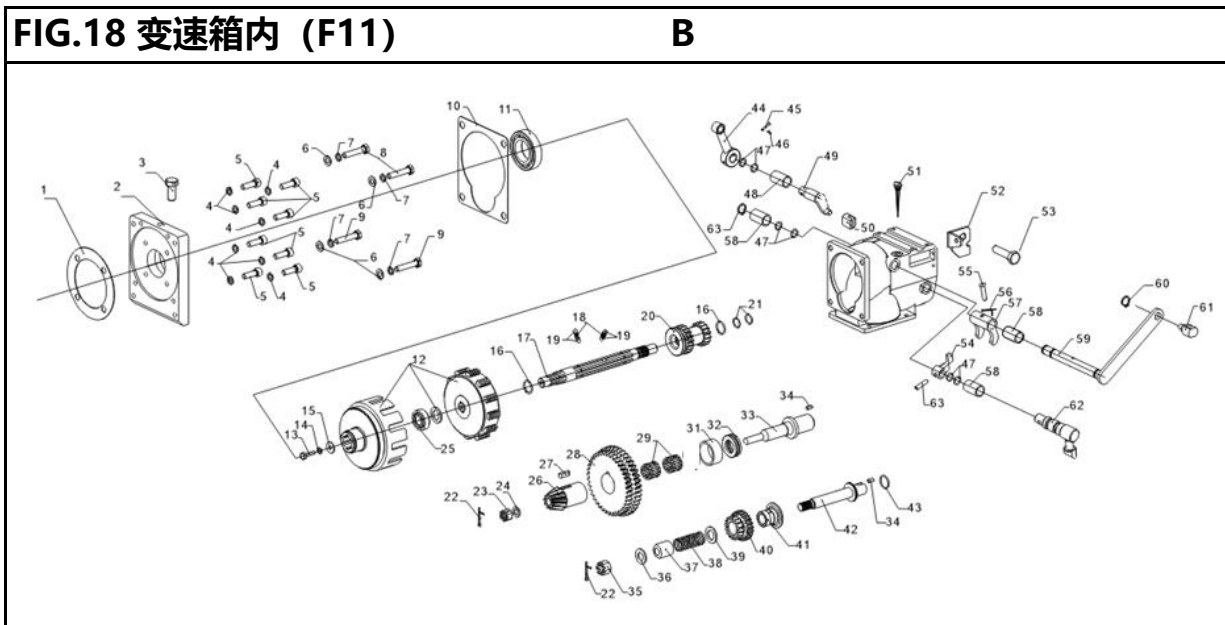
FIG.17 箱体后 (F10)



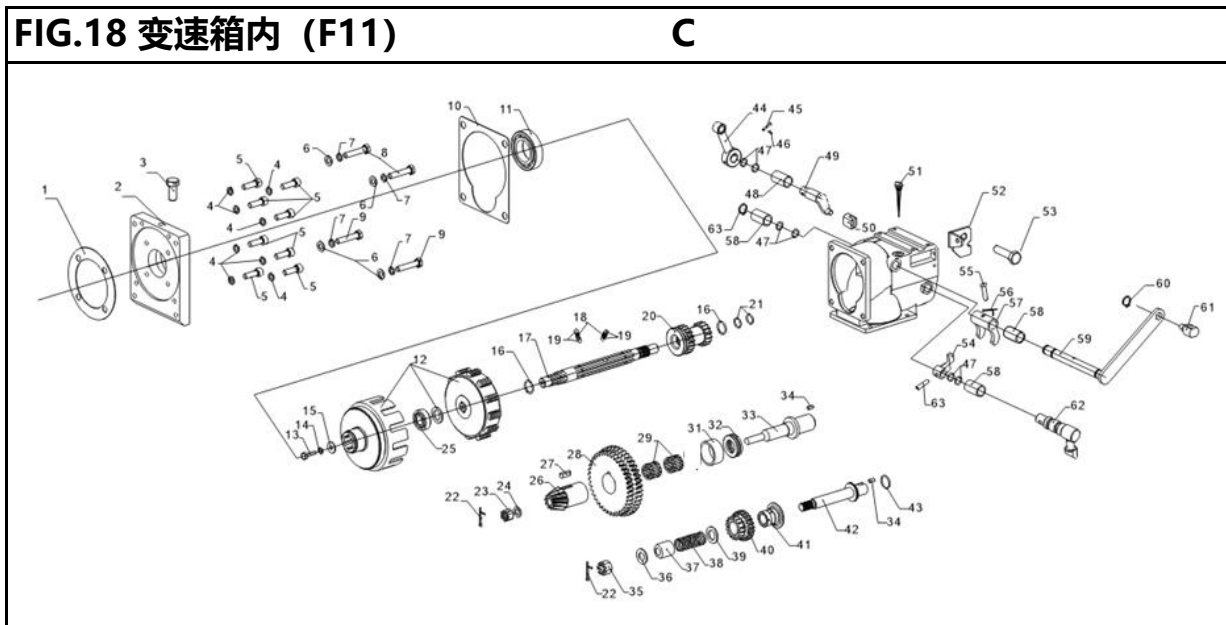
REF.NO. 序号	PART NO 物料代码	DESCRIPTION 英文名	Q'TY 数量	包装数
F10-1	76351-U090110-JA00	BOX BODY, TRANSMISSION	1	1
F10-2	90548-0204-CL	BEARIN, DEEP GROOVE BALL	1	1
F10-3	90683-U090310-0000	BUSH	1	1
F10-4	90422-2000-0608		1	1
F10-5	90317-2000-0608		1	1
F10-6	23515-U090110-0000		1	1
F10-7	90521-U080110-0000	Flat key	1	1
F10-8	90401-0800-D108		1	1
F10-9	90403-0800-Z108	WASHER, FLAT	1	1
F10-10	90005-0816-0108		1	1
F10-11	90692-U090110-0000		1	1
F10-12	23514-U090110-0000		1	1
F10-13	90682-U090110-0000	SEAL, OIL	1	1
F10-14	23513-U090110-0000		1	1
F10-15	90403-0600-0108	WASHER, FLAT	4	1
F10-16	90005-0616-0108		4	1
F10-17	90412-U090810-0000	WASHER, FLAT	1	1
F10-18	90403-1200-0108	WASHER, FLAT	1	1
F10-19	90005-1225-0108		1	1
F10-20	90408-1000-E108	WASHER, FLAT	1	1
F10-21	90403-1000-0108	WASHER, FLAT	1	1
F10-22	90005-1025-0108		1	1



REF.NO. 序号	PART NO 物料代码	DESCRIPTION 英文名	Q'TY 数量	包装数
F11-1	24307-U090210-0000		1	1
F11-2	24305-U180110-JA00		1	1
F11-3	24308-U080110-0000		1	1
F11-4	90403-0800-Z108	WASHER, FLAT	8	1
F11-5	90102-0825-0108		8	1
F11-6	90408-1000-E108	WASHER, FLAT	4	1
F11-7	90403-1000-0108	WASHER, FLAT	4	1
F11-8	90005-1040-0108		2	1
F11-9	90005-1035-0108		2	1
F11-10	24306-U090210-0000		1	1
F11-11	90548-6007-CL	BEARIN, DEEP GROOVE BALL	1	1
F11-12	22000-U090111-0000	CLUTCH	1	1
F11-13	90005-0816-0108		1	1
F11-14	90403-0800-Z108	WASHER, FLAT	1	1
F11-15	90406-0800-E108	WASHER, FLAT	1	1
F11-16	90578-2503-0608		2	1
F11-17	23501-U090110-0000	AXLE, MAIN	1	1
F11-18	24524-U090110-0000		2	1
F11-19	90543-6300-0008	BALL, STEEL	4	1
F11-20	28301-U090410-0000	GEAR, DUPLICATE	1	1

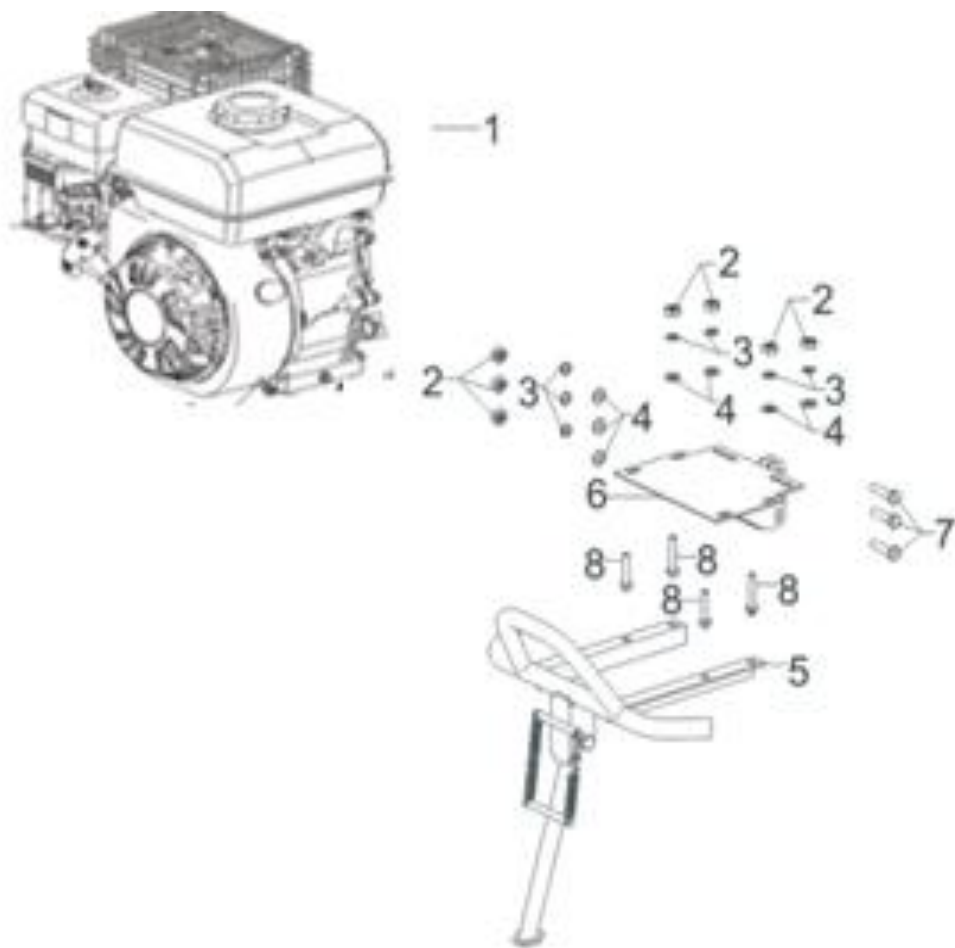


REF.NO. 序号	PART NO 物料代码	DESCRIPTION 英文名	Q'TY 数量	包装数
F11-21	90692-U090510-0000		2	1
F11-22	90501-2525-0108	PIN	2	1
F11-23	90307-1000-0108		1	1
F11-24	90412-U090110-0000	WASHER, FLAT	3	1
F11-25	90548-0202-CL	BEARIN, DEEP GROOVE BALL	1	1
F11-26	23609-U090110-0000		1	1
F11-27	90521-U080110-0000		1	1
F11-28	28301-U090410-0000	GEAR, DUPLICATE	1	1
F11-29	90565-3301-00		2	1
F11-31	90683-U090410-0000		1	1
F11-32	90555-1104-00		1	1
F11-33	23601-U090210-0000	COUNTERSHAFT	1	1
F11-34	90505-0510-0008		2	1
F11-35	90307-1200-0108		1	1
F11-36	90408-1200-E108	WASHER, FLAT	1	1
F11-37	23809-U080110-0000		1	1
F11-38	23808-U080110-0000		1	1
F11-39	90412-U090610-0000	WASHER, FLAT	1	1
F11-40	28301-U090310-0000	GEAR, DUPLICATE	1	1
F11-41	23807-U090110-0000		1	1

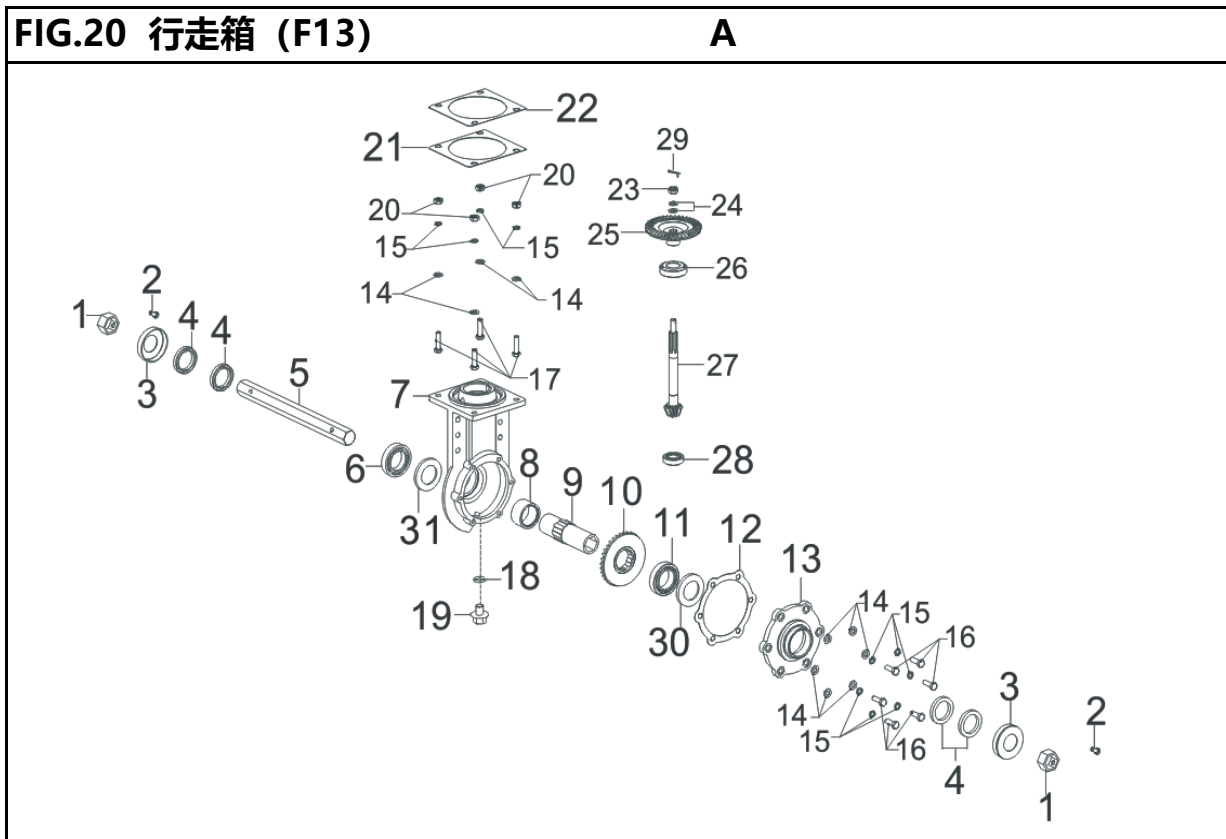


REF.NO. 序号	PART NO 物料代码	DESCRIPTION 英文名	Q'TY 数量	包装数
F11-42	23806-U090110-0000		1	1
F11-43	90692-U080610-0000		1	1
F11-44	23401-U090110-0000		1	1
F11-45	90504-0640-0108		1	1
F11-46	90501-0220-0108	PIN	1	1
F11-47	90692-U090410-0000		6	1
F11-48	90683-U090110-0000		1	1
F11-49	24420-U090210-0000	FORK SUBASSEMBLY, SHIFTS	1	1
F11-50	24421-U090310-0000	FORK, SHIFTS	1	1
F11-51	15010-U090110-G400	DIPSTICK SUBASSEMBLY, OIL	1	1
F11-52	54037-U090410-0000		1	1
F11-53	90001-0812-0108	BOLT	1	1
F11-54	24421-U090110-0000	FORK, SHIFTS	1	1
F11-55	90504-0630-0108		1	1
F11-56	90501-0220-0108	PIN	1	1
F11-57	24421-U090210-0000	FORK, SHIFTS	1	1
F11-58	90683-U090210-0000		3	1
F11-59	24420-U090310-0000	FORK SUBASSEMBLY, SHIFTS	1	1
F11-60	90573-1600-0608		1	1
F11-61	54037-U090510-0000		1	1
F11-62	24420-U090110-0000	FORK SUBASSEMBLY, SHIFTS	1	1
F11-63	90125-U090110-0000		1	1

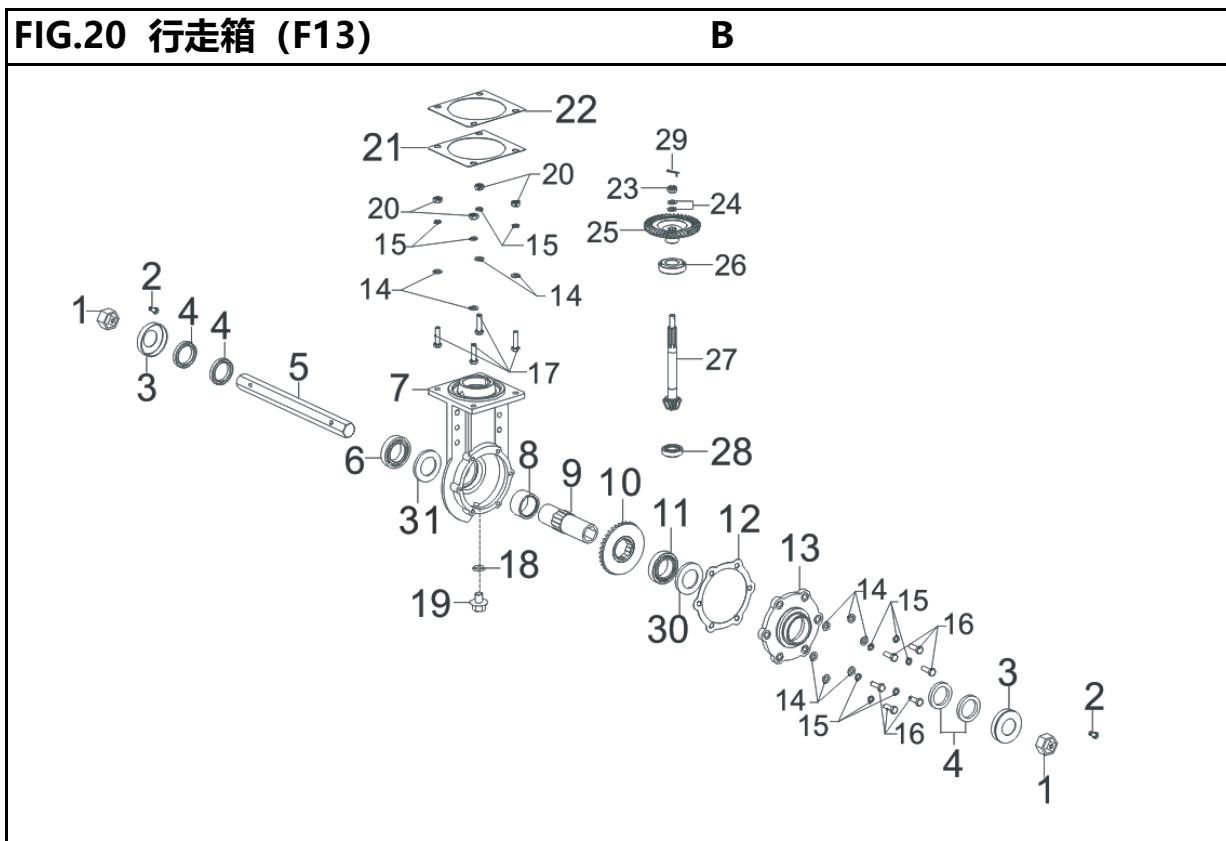
FIG.19 动力安装部分 (F12)



REF.NO. 序号	PART NO 物料代码	DESCRIPTION 英文名	Q'TY 数量	包装数
F12-1	R420-V	ENGINE	1	1
F12-2	90303-1000-3108	NUT	7	1
F12-3	90403-1000-0108	WASHER, FLAT	7	1
F12-4	90408-1000-E108	WASHER, FLAT	7	1
F12-5	58410-U180210-H300	GUARD	1	1
F12-6	76006-U180110-H300		1	1
F12-7	90005-1040-0108		3	1
F12-8	90005-1045-0108		4	1



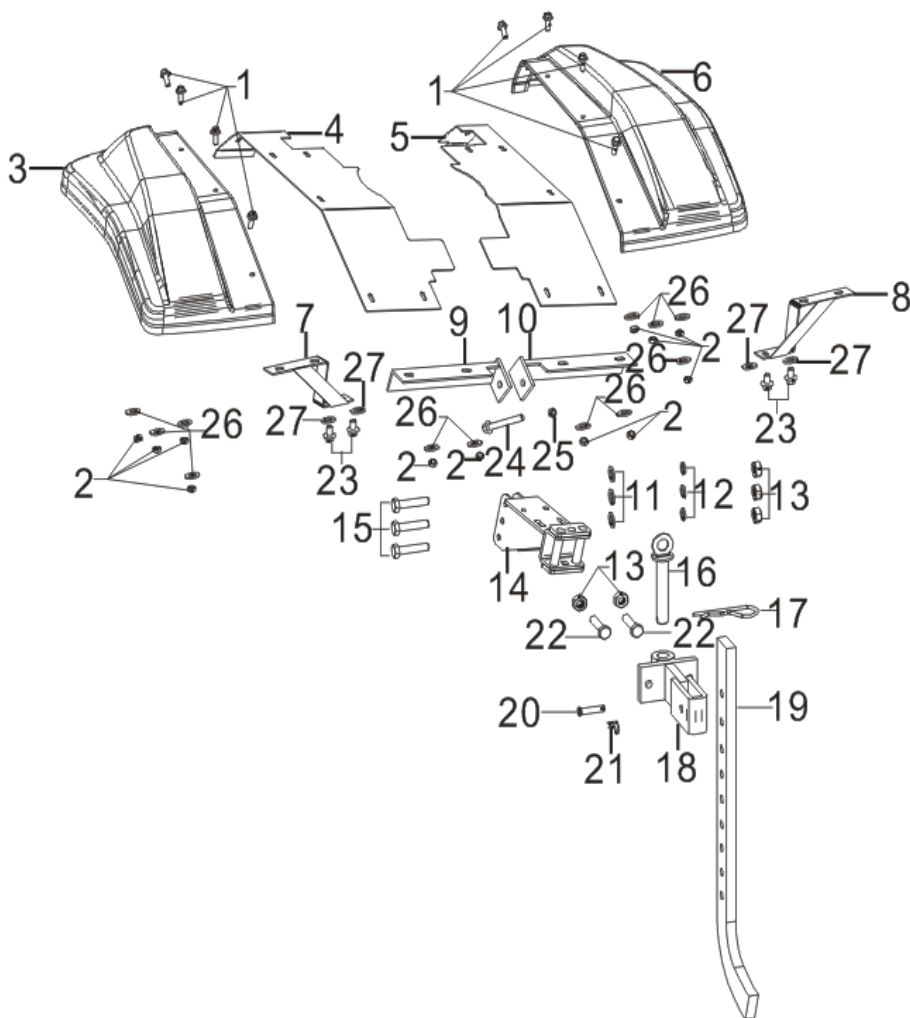
REF.NO. 序号	PART NO 物料代码	DESCRIPTION 英文名	Q'TY 数量	包装数
F13-1	76611-U090110-0000		2	1
F13-2	90005-0816-0108		2	1
F13-3	76322-U090110-0000		2	1
F13-4	90682-U090210-0000	SEAL, OIL	4	1
F13-5	76315-U090110-0000		1	1
F13-6	90548-0009-CL	BEARIN, DEEP GROOVE BALL	1	1
F13-7	76351-U090310-RU00	BOX BODY, TRANSMISSION	1	1
F13-8	76609-U090110-0000		1	1
F13-9	76608-U090110-0000		1	1
F13-10	76605-U090110-0000		1	1
F13-11	90552-2009-CL		1	1
F13-12	76602-U090110-0000		1	1
F13-13	76301-U090110-JA00	COVER, TRANSMISSION BOX	1	1
F13-14	90408-1000-E1	WASHER, FLAT	10	1
F13-15	90403-1000-01	WASHER, FLAT	10	1



REF.NO. 序号	PART NO 物料代码	DESCRIPTION 英文名	Q'TY 数量	包装数
F13-16	90005-1030-0608		6	1
F13-17	90005-1040-01		4	1
F13-18	90692-U080710-0000		1	1
F13-19	11007-U080110-0000	BOLT, DRAIN PLUG	1	1
F13-20	90303-1000-31	NUT	4	1
F13-21	76606-U090110-0000		按需	1
F13-22	76606-U090210-0000		按需	1
F13-23	90334-U090110-0000		1	1
F13-24	90408-1200-E1	WASHER, FLAT	2	1
F13-25	76604-U090110-0000		1	1
F13-26	90552-0206-CL		1	1
F13-27	76603-U090110-0000		1	1
F13-28	90552-0204-CL		1	1
F13-29	90501-2525-01	PIN	1	1
F13-30	90412-U090410-0000	WASHER, FLAT	按需	1
F13-31	90412-U090510-0000	WASHER, FLAT	按需	1

FIG.21 挡泥板部分 (F14)

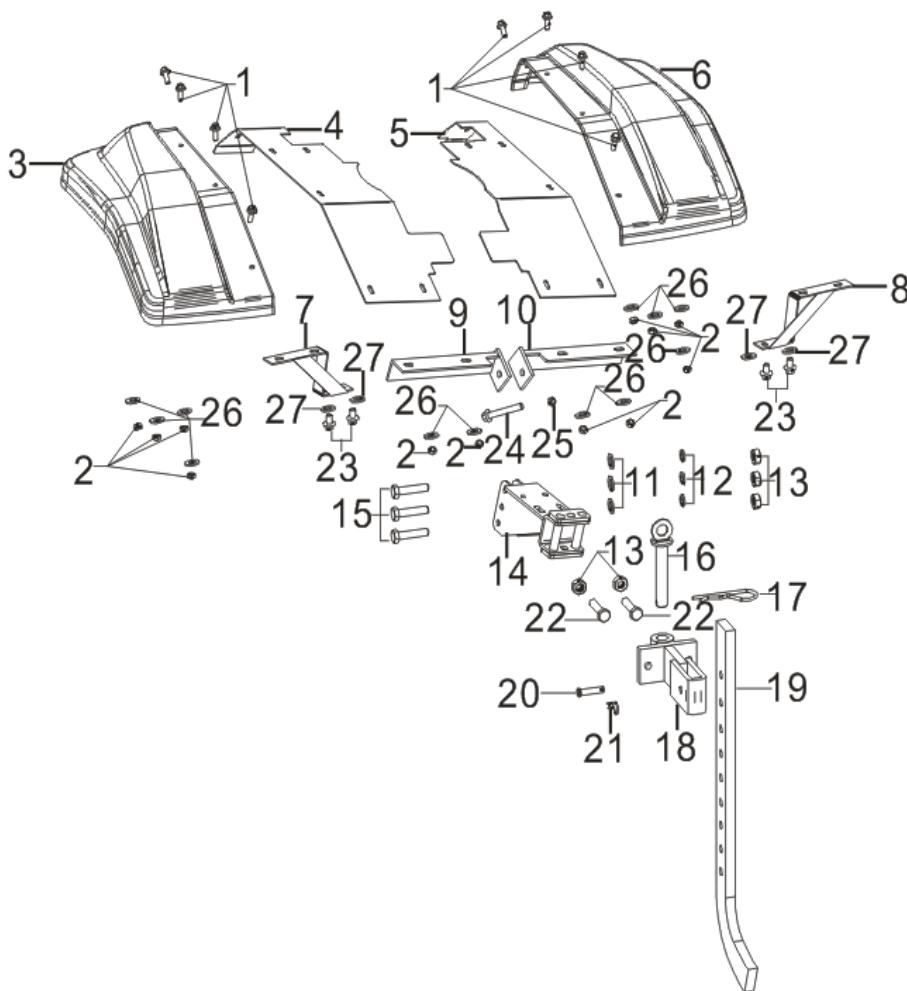
A



REF.NO. 序号	PART NO 物料代码	DESCRIPTION 英文名	Q'TY 数量	包装数
F14-1	90007-0616-A108	BOLT	12	1
F14-2	90325-0600-3108		12	1
F14-3	76007-U240110-YC00	FENDER, MINI-TILLER	1	1
F14-4	76007-U240310-YC00	FENDER, MINI-TILLER	1	1
F14-5	76007-U240410-YC00	FENDER, MINI-TILLER	1	1
F14-6	76007-U240210-YC00	FENDER, MINI-TILLER	1	1
F14-7	80009-U240110-H300	SUPPORT, FRONT FENDER	1	1
F14-8	80009-U240210-H300	SUPPORT, FRONT FENDER	1	1
F14-9	82002-U240210-H300	SUPPORT, REAR FENDER	1	1
F14-10	82002-U240310-H300	SUPPORT, REAR FENDER	2	1
F14-11	90408-1000-E108	WASHER, FLAT	3	1
F14-12	90403-1000-0108	WASHER, FLAT	3	1
F14-13	90303-1000-3108	NUT	5	1

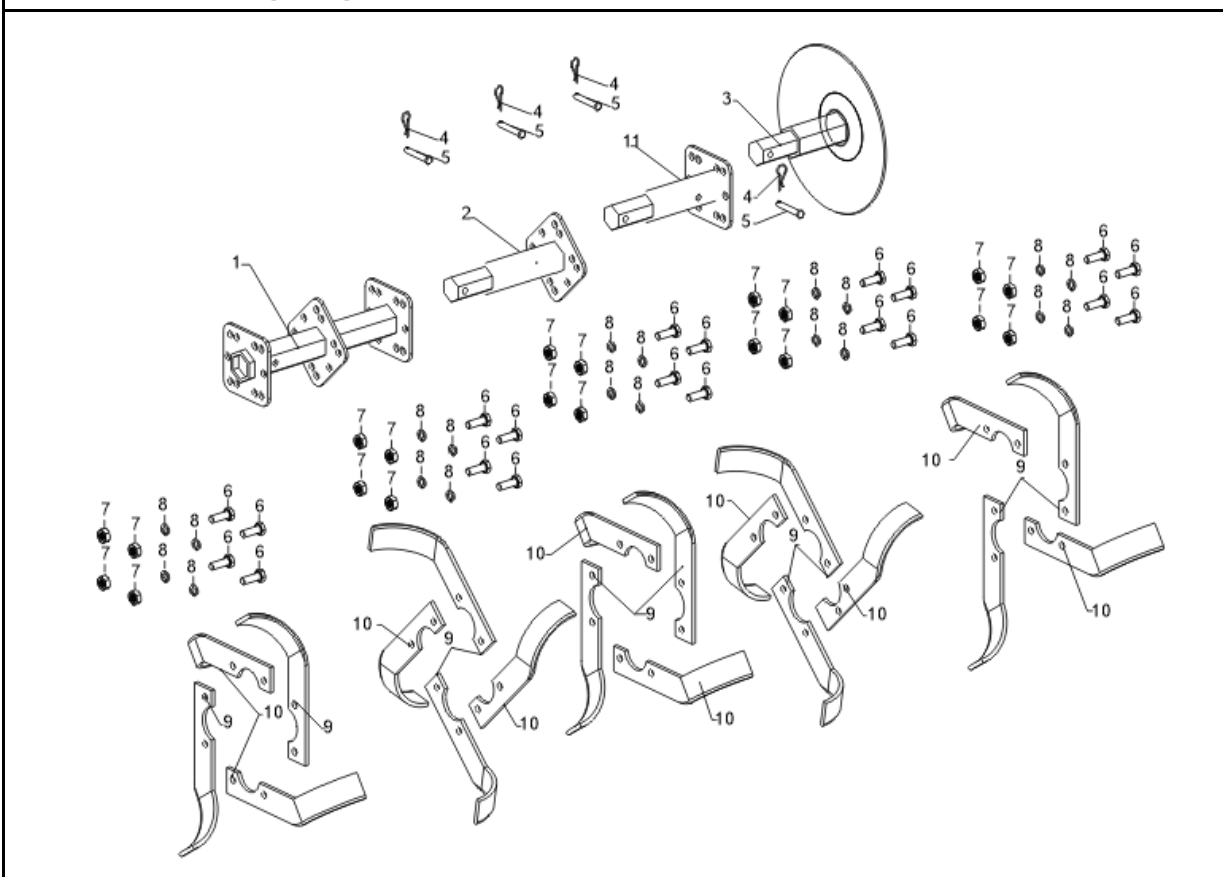
FIG.21 挡泥板部分 (F14)

B



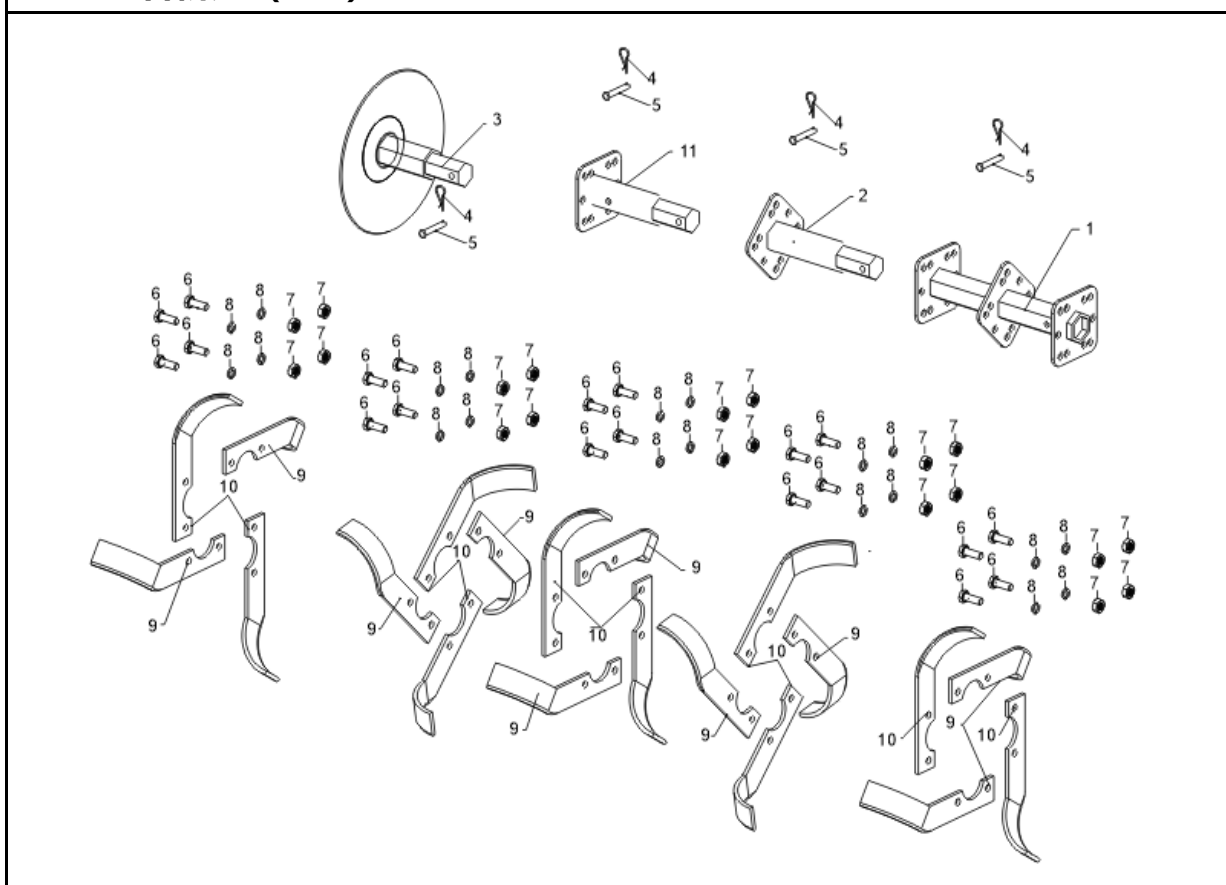
REF.NO. 序号	PART NO 物料代码	DESCRIPTION 英文名	Q'TY 数量	包装数
F14-14	76025-U240110-H300		1	1
F14-15	90005-1050-0108		3	1
F14-16	90504-U090110-0000	PIN ROLL	1	1
F14-17	90583-3581-01		1	1
F14-18	76024-U090110-H300		1	1
F14-19	76016-U080110-H300		1	1
F14-20	90504-0840-0108	PIN ROLL	1	1
F14-21	90583-0238-01		1	1
F14-22	90005-1040-0108		2	1
F14-23	90001-0816-0108	BOLT	4	1
F14-24	90001-0855-0108	BOLT	1	1
F14-25	90305-Z010110-0008	NUT	1	1
F14-26	90406-0600-E108		12	1
F14-27	90406-0800-E108	WASHER, FLAT	4	1

FIG.23 左耕刀 (F17)



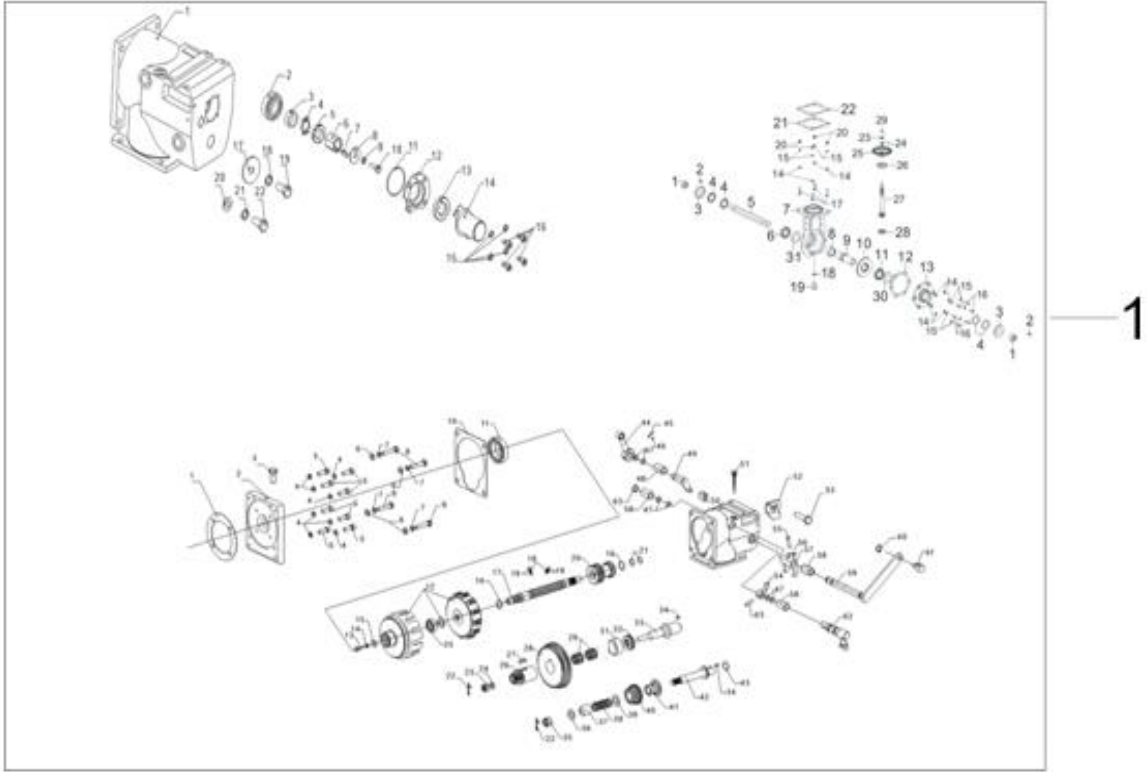
REF.NO. 序号	PART NO 物料代码	DESCRIPTION 英文名	Q'TY 数量	包装数
F17-1	76725-U500310-H300		1	1
F17-2	76725-U500410-H300		1	1
F17-3	76723-U090110-H300		1	1
F17-4	90583-0238-01		4	1
F17-5	90504-0850-0108	PIN ROLL	4	1
F17-6	90005-1030-0608		20	1
F17-7	90303-1000-3608	NUT	20	1
F17-8	90403-1000-0608	WASHER, FLAT	20	1
F17-9	76721-U070410-H300		8	1
F17-10	76721-U070310-H300		8	1
F17-11	76725-U500210-H300		1	1

FIG.24 右耕刀 (F18)



REF.NO. 序号	PART NO 物料代码	DESCRIPTION 英文名	Q'TY 数量	包装数
F18-1	76725-U500310-H300		1	1
F18-2	76725-U500410-H300		1	1
F18-3	76723-U090110-H300		1	1
F18-4	90583-0238-01		4	1
F18-5	90504-0850-0108	PIN ROLL	4	1
F18-6	90005-1030-0608		20	1
F18-7	90303-1000-3608	NUT	20	1
F18-8	90403-1000-0608	WASHER, FLAT	20	1
F18-9	76721-U070310-H300		8	1
F18-10	76721-U070310-H300		8	1
F18-11	76725-U500210-H300		1	1

FIG.24 传动箱体组合 (F19)



REF.NO. 序号	PART NO 物料代码	DESCRIPTION 英文名	Q'TY 数量	包装数
F19-1	76350-U180110-JA00	BOX SUBASSEMBLY, TRANSMISSION	1	1

