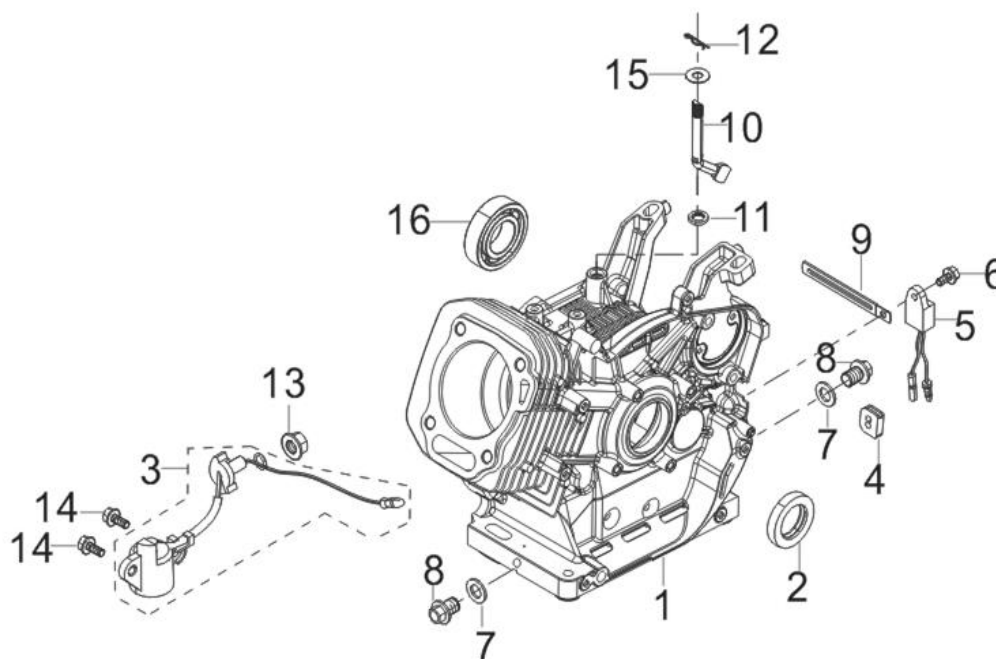


RG6.5-130Q-Z-2 (21910064)

FIG.1 CRANKCASE. (E01)

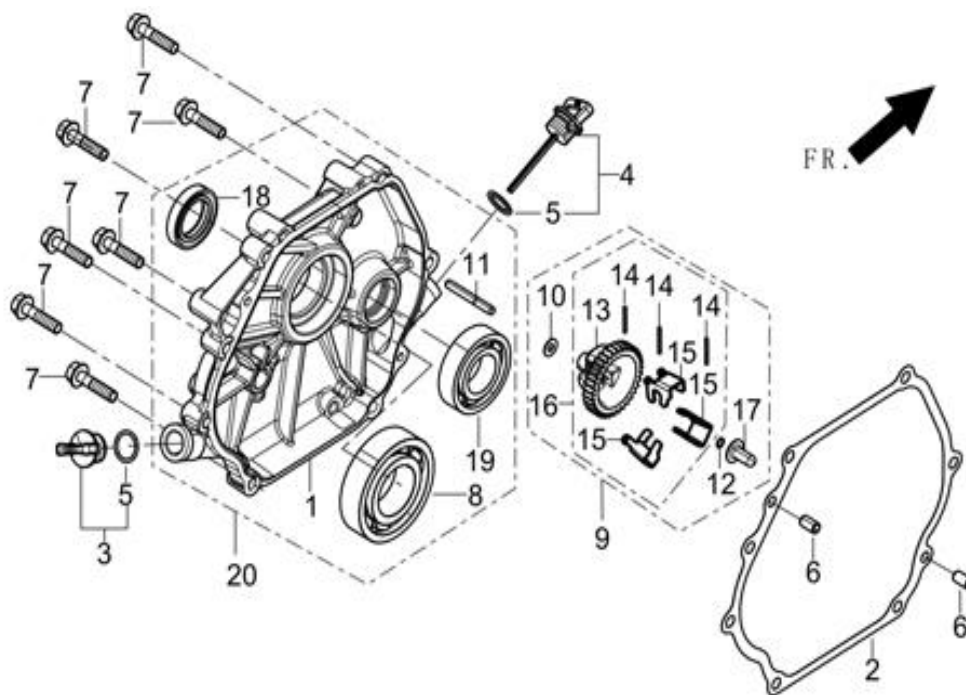
图1: 曲轴箱组件(E01)



| REF.NO. 序号 | PART NO 物料代码 | DESCRIPTION 英文名 | Q'TY 数量 | 包装数 |
|---------------|--------------------|--------------------------|------------|-----|
| E01-1 | 11310-Z101110-0BA0 | CRANKCASE SUBASSEMBLY. | 1 | 1 |
| E01-2 | 90682-Z310110-00A0 | SEAL, OIL | 1 | 1 |
| E01-3 | 37060-Z080120-00A0 | SENSOR, ENGINE OIL | 1 | 1 |
| E01-4 | 28101-Z080110-00A0 | PLUG, RUBBER | 1 | 1 |
| E01-5 | 37050-Z010210-00A0 | PROTECTOR, OIL | 1 | 1 |
| E01-6 | 90001-0612-01A0 | BOLT | 1 | 1 |
| E01-7 | 90412-Z080110-00A0 | WASHER, FLAT | 2 | 1 |
| E01-8 | 11007-Z080110-00A0 | BOLT, DRAIN PLUG | 2 | 1 |
| E01-9 | 90684-Z030120-00A0 | CLIP | 1 | 1 |
| E01-10 | 16061-Z100110-00A0 | ARM, GOVERNOR | 1 | 1 |
| E01-11 | 90682-Z100210-00A0 | SEAL, OIL | 1 | 1 |
| E01-12 | 90501-Z010110-00A0 | PIN | 1 | 1 |
| E01-13 | 90305-Z010210-01A0 | NUT | 1 | 1 |
| E01-14 | 90001-0616-01A0 | BOLT | 2 | 1 |
| E01-15 | 90412-Z080210-00A0 | WASHER, FLAT | 1 | 1 |
| E01-16 | 90548-0202-CLA0 | BEARIN, DEEP GROOVE BALL | 1 | 1 |

FIG.2 COVER SUBASSEMBLY, CRANKCASE / GEAR ASSY, GOVERNOR (E02)

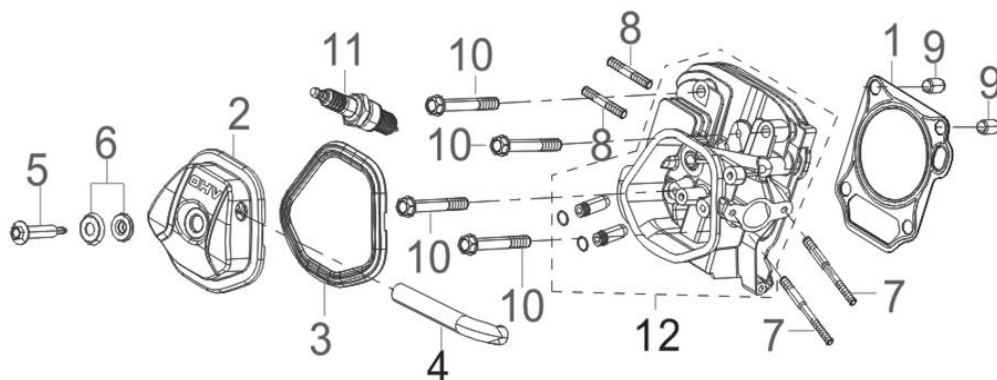
图2：曲轴箱盖部件 + 调速齿轮部件(E02)



| REF.NO. 序号 | PART NO 物料代码 | DESCRIPTION 英文名 | Q'TY 数量 | 包装数 |
|---------------|--------------------|------------------------------|------------|-----|
| E02-1 | 11411-Z100710-0BA0 | COVER, CRANKCASE | 1 | 1 |
| E02-2 | 11001-Z100120-00A0 | GASKET, CRANKCASE | 1 | 1 |
| E02-3 | 15030-Z080130-Q5A0 | PLUG SUBASSEMBLY, ENGINE OIL | 1 | 1 |
| E02-4 | 15010-Z080130-Q5A0 | DIPSTICK SUBASSEMBLY, OIL | 1 | 1 |
| E02-6 | 90502-0812-00A0 | PIN | 2 | 1 |
| E02-7 | 90001-0840-01A0 | BOLT | 7 | 1 |
| E02-8 | 90548-0207-CLA0 | BEARIN, DEEP GROOVE BALL | 1 | 1 |
| E02-9 | 16400-Z100110-00A9 | GEAR ASSY, GOVERNOR | 1 | 1 |
| E02-18 | 90682-Z310110-00A0 | SEAL, OIL | 1 | 1 |
| E02-19 | 90548-0202-CLA0 | BEARIN, DEEP GROOVE BALL | 1 | 1 |

FIG.3 HEAD SUBASSEMBLY, CYLINDER / PLUG,SPARK (E03)

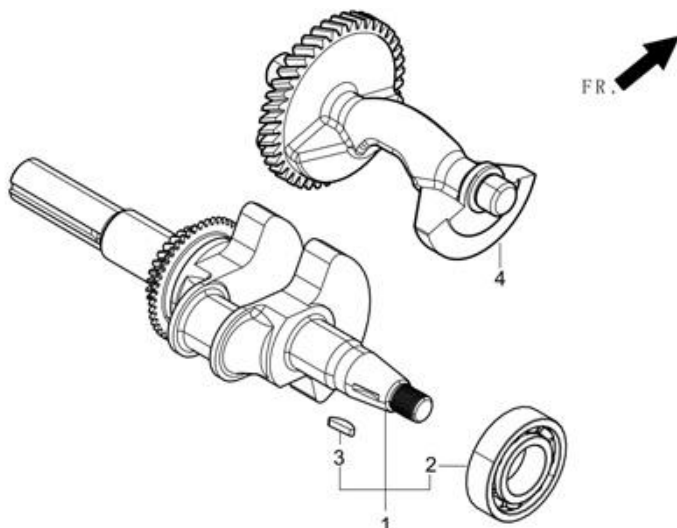
图3： 气缸头部件/火花塞 (E03)



| REF.NO. 序号 | PART NO 物料代码 | DESCRIPTION 英文名 | Q'TY 数量 | 包装数 |
|---------------|--------------------|----------------------------------|------------|-----|
| E03-1 | 12131-Z100110-00A0 | GASKET, CYLINDER HEAD | 1 | 1 |
| E03-2 | 12410-Z310110-00A0 | COVER SUBASSEMBLY, CYLINDER HEAD | 1 | 1 |
| E03-3 | 12004-Z080110-00A0 | GASKET, CYLINDER HEAD COVER | 1 | 1 |
| E03-4 | 17004-Z100110-00A0 | TUBE, BREATHER | 1 | 1 |
| E03-5 | 12032-Z080110-01A0 | BOLT, CYLINDER HEAD | 1 | 1 |
| E03-6 | 12034-Z080110-00A9 | | 1 | 1 |
| E03-7 | 90204-Z100210-01A0 | BOLT | 2 | 1 |
| E03-8 | 90204-Z100320-01A0 | BOLT | 2 | 1 |
| E03-9 | 90502-1220-00A0 | PIN | 2 | 1 |
| E03-10 | 12003-Z080110-00A0 | BOLT, CYLINDER HEAD | 4 | 1 |
| E03-11 | 30010-Z010110-00A0 | PLUG, SPARK | 1 | 1 |
| E03-12 | 12140-Z190150-0BA9 | HEAD SUBASSEMBLY, CYLINDER | 1 | 1 |

FIG.4 ROD,CRANKSHAFT CONNETING (E04)

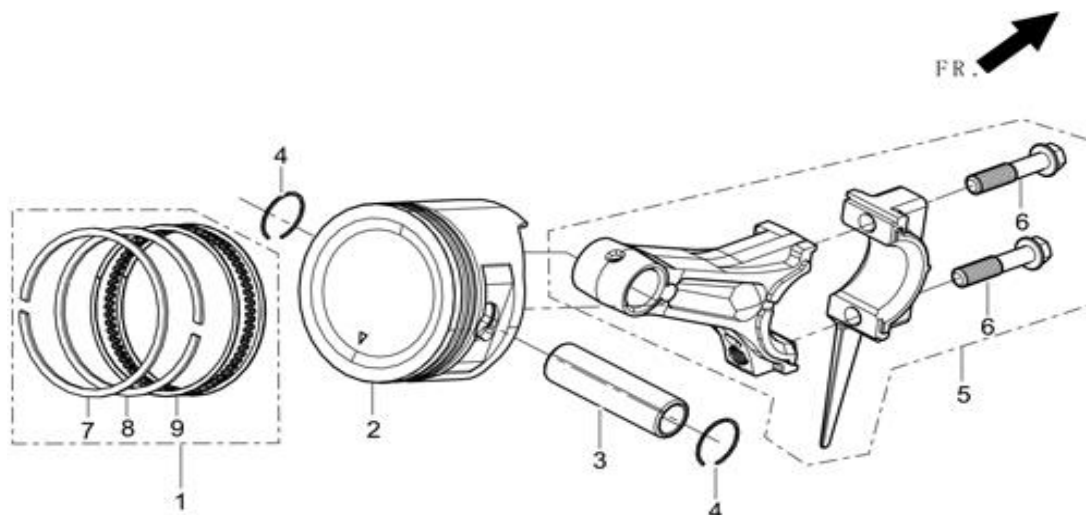
图4：曲柄连杆组件(E04)



| REF.NO. 序号 | PART NO 物料代码 | DESCRIPTION 英文名 | Q'TY 数量 | 包装数 |
|---------------|--------------------|--------------------|------------|-----|
| E04-1 | 13300-Z101210-RBA0 | CRANKSHAFT ASSY. | 1 | 1 |
| E04-4 | 13401-Z100110-00A0 | BALANCING SHAFT | 1 | 1 |

FIG.5 RING SET,OIL / ROD,CRANKSHAFT CONNETING (E05)

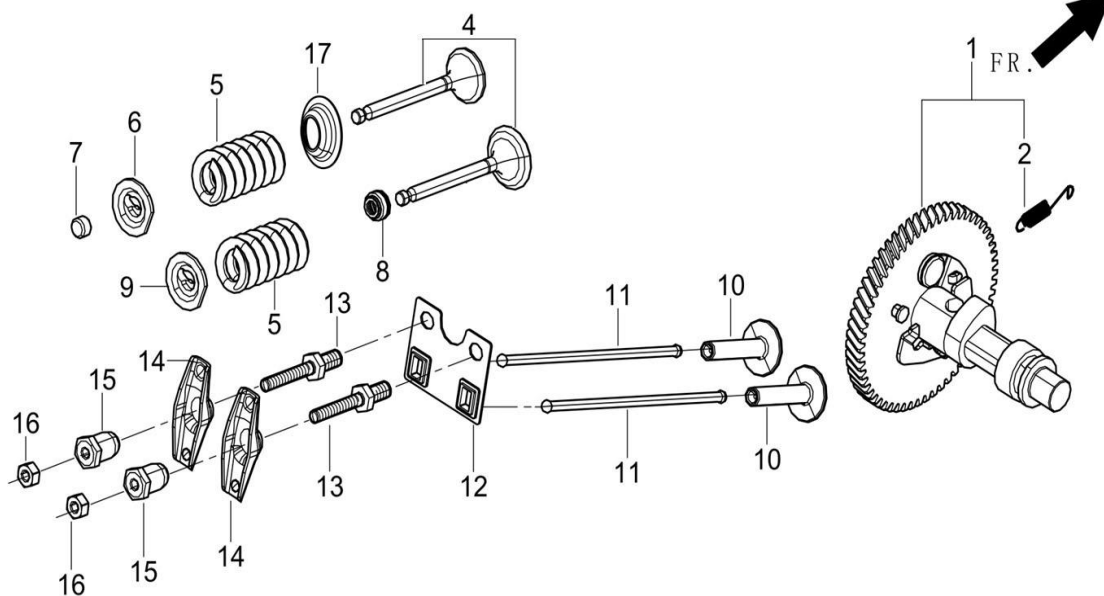
图5：油环组合/曲柄连杆组件 (E05)



| REF.NO. 序号 | PART NO 物料代码 | DESCRIPTION 英文名 | Q'TY 数量 | 包装数 |
|---------------|--------------------|--------------------|------------|-----|
| E05-1 | 13200-Z100110-00A9 | RING ASSY, PISTON | 1 | 1 |
| E05-2 | 13111-Z100410-00A9 | PISTON | 1 | 1 |
| E05-3 | 13121-Z100110-00A0 | PIN, PISTON | 1 | 1 |
| E05-4 | 13122-Z100110-00A0 | CLIP, PISTON PIN | 2 | 1 |
| E05-5 | 13010-Z100120-00A0 | ROD, CONNECTING | 1 | 1 |

FIG.6 TRAIN,VALVE / CAMSHAFT SUBASSEMBLY 配气机构组件/凸轮轴 (E06)

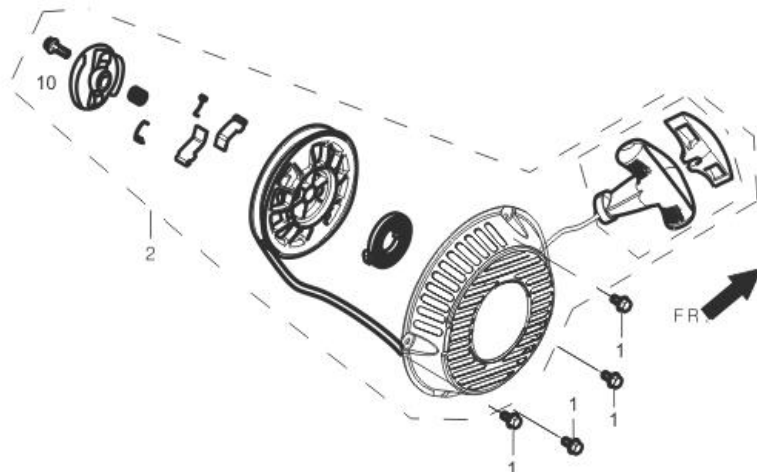
图6： 配气机构组件/凸轮轴 (E06)



| REF.NO. 序号 | PART NO 物料代码 | DESCRIPTION 英文名 | Q'TY 数量 | 包装数 |
|---------------|--------------------|-----------------------------------|------------|-----|
| E06-1 | 14200-Z100320-00A9 | CAMSHAFT ASSY. | 1 | 1 |
| E06-4 | 12110-Z190110-00A9 | VALVES SET | 1 | 1 |
| E06-5 | 12103-Z080110-00A0 | SPRING, VALVE | 2 | 1 |
| E06-6 | 12107-Z080110-00A0 | RETAINER, EXHAUST VALVE | 1 | 1 |
| E06-7 | 12104-Z080110-00A0 | ROTATOR, VALVE | 1 | 1 |
| E06-8 | 12101-Z080110-00A0 | GUIDE, SEAL | 1 | 1 |
| E06-9 | 12112-Z080110-00A0 | SEAT, VALVE SPRING | 1 | 1 |
| E06-10 | 14081-Z080110-00A0 | TAPPET, VALVE | 2 | 1 |
| E06-11 | 14070-Z100110-00A0 | LIFTER SUBASSEMBLY, VALVE | 2 | 1 |
| E06-12 | 14090-Z080110-00A0 | PLATE SUBASSEMBLY, LIFTER STOPPER | 1 | 1 |
| E06-13 | 14313-Z010110-00A0 | BOLT, ROCKER SHAFT | 2 | 1 |
| E06-14 | 14311-Z080110-00A0 | ROCKER, VALVE | 2 | 1 |
| E06-15 | 14314-Z010110-00A0 | NUT, VALVE ADJUSTING | 2 | 1 |
| E06-16 | 14312-Z010110-00A0 | NUT, VALVE LOCK | 2 | 1 |
| E06-17 | 12105-Z080110-00A0 | RETAINER, VALVE SPRING | 1 | 1 |

FIG.7 STARTER,RECOIL (E07)

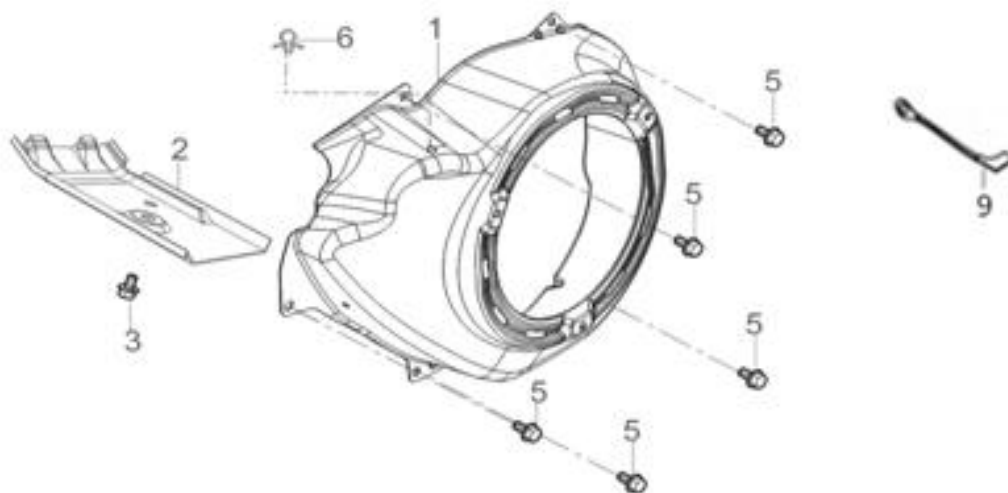
图7：手起动组件 (E07)



| REF.NO. 序号 | PART NO 物料代码 | DESCRIPTION 英文名 | Q'TY 数量 | 包装数 |
|---------------|--------------------|----------------------|------------|-----|
| E07-1 | 90001-0608-01A0 | BOLT | 3 | 1 |
| E07-2 | 28200-Z100310-RUA0 | STARTER ASSY, RECOIL | 1 | 1 |

FIG.8 SHROUD / SHIELD,LOWER (E08)

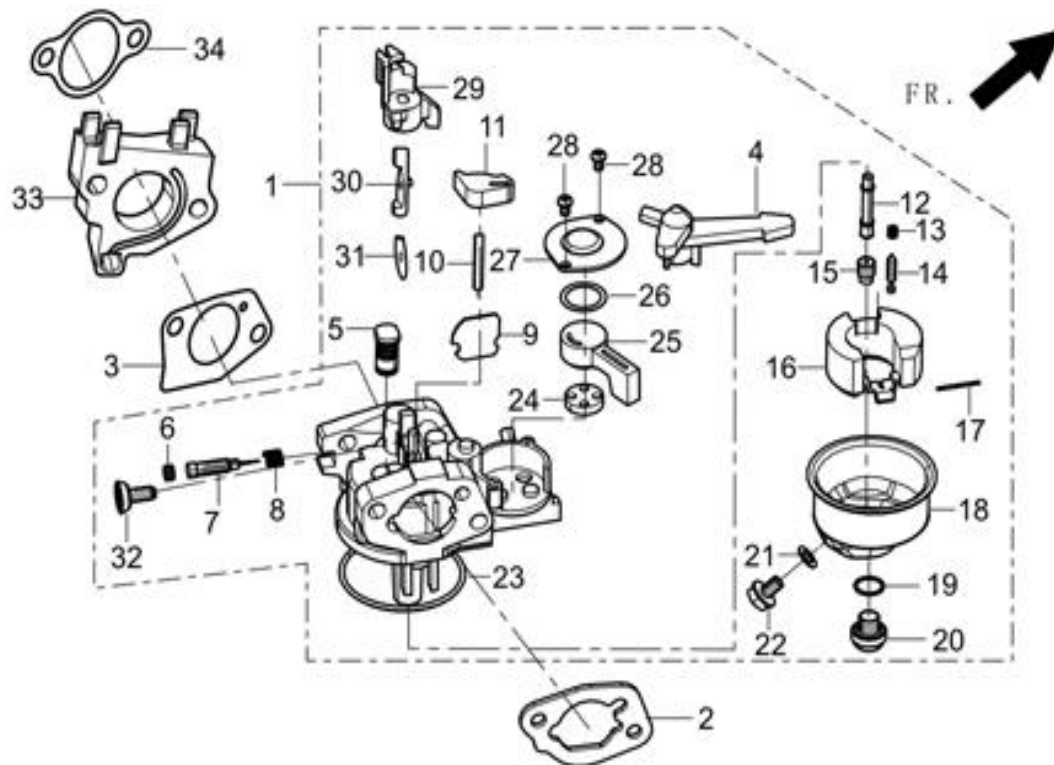
图8：缸体导风罩/下护罩 (E08)



| REF.NO. 序号 | PART NO 物料代码 | DESCRIPTION 英文名 | Q'TY 数量 | 包装数 |
|---------------|--------------------|------------------------------------|------------|-----|
| E08-1 | 28110-Z100310-RUA0 | SHROUD | 1 | 1 |
| E08-2 | 19304-Z100210-00A0 | SHROUD, CYLINDER BODY | 1 | 1 |
| E08-3 | 90001-0612-01A0 | BOLT | 1 | 1 |
| E08-5 | 90001-0612-01A0 | BOLT | 5 | 1 |
| E08-6 | 90684-Z080110-00A0 | CLIP | 1 | 1 |
| E08-9 | 35555-Z010410-00A0 | WIRE, STOP ENGINE SWITCH GROUNDING | 1 | 1 |

FIG.9 CARBURETOR ASSY. (E09)

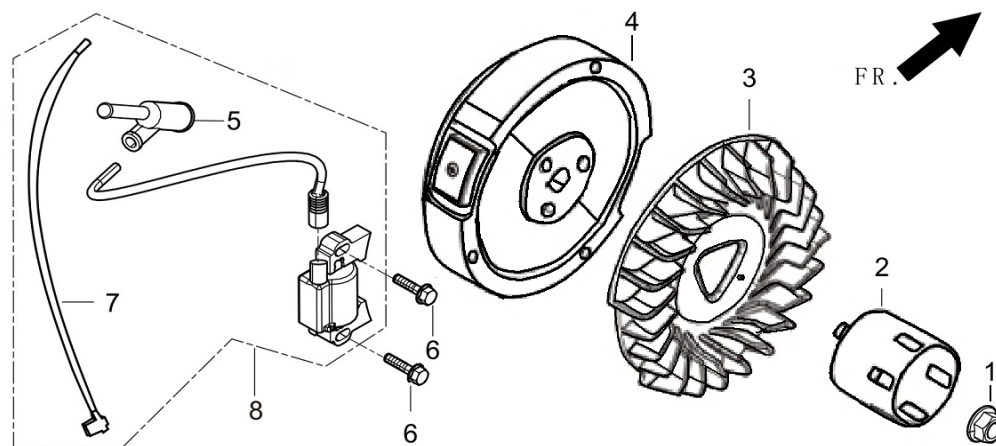
图9：化油器部件 (E09)



| REF.NO. 序号 | PART NO 物料代码 | DESCRIPTION 英文名 | Q'TY 数量 | 包装数 |
|---------------|--------------------|-----------------------------|------------|-----|
| E09-1 | 16100-Z0E0110-00A1 | CARBURETOR ASSY. | 1 | 1 |
| E09-2 | 17001-Z080210-00A0 | GASKET, AIR CLEANER | 1 | 1 |
| E09-3 | 16001-Z100110-00A0 | GASKET, CARBURETOR | 1 | 1 |
| E09-33 | 16003-Z100110-00A0 | PLATE, CARBURETOR INSULATOR | 1 | 1 |
| E09-34 | 17002-Z100110-00A0 | GASKET, INLET | 1 | 1 |

FIG.10 FLYWHEEL / IMPELLER / STARTER PULLEY / IGNITION COIL (E10)

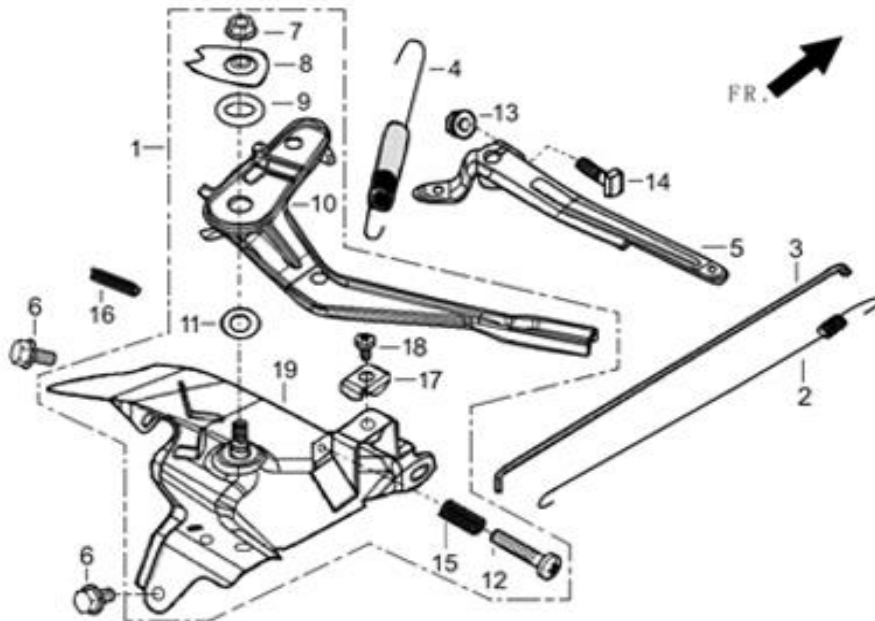
图10: 飞轮/叶轮/启动杯/点火线圈 (E10)



| REF.NO. 序号 | PART NO 物料代码 | DESCRIPTION 英文名 | Q'TY 数量 | 包装数 |
|---------------|--------------------|----------------------|------------|-----|
| E10-1 | 13501-Z080110-00A0 | NUT, FLYWHEEL | 1 | 1 |
| E10-2 | 28002-Z100210-00A0 | PULLEY,STARTER | 1 | 1 |
| E10-3 | 19352-Z100120-00A0 | IMPELLER | 1 | 1 |
| E10-4 | 13510-Z100120-00A0 | FLYWHEEL SUBASSEMBLY | 1 | 1 |
| E10-6 | 90001-0628-01A0 | BOLT | 2 | 1 |
| E10-8 | 30400-Z080910-00A0 | COIL, IGNITION | 1 | 1 |

FIG.11 CONTROL ASSY, THROTTLE (E11)

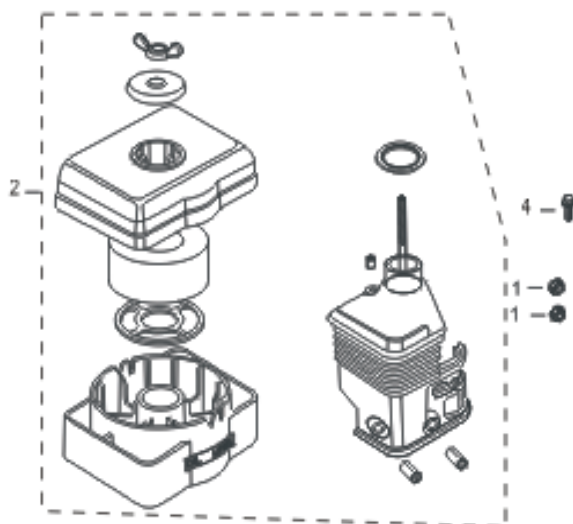
图11: 油门操纵部件 (E11)



| REF.NO. 序号 | PART NO 物料代码 | DESCRIPTION 英文名 | Q'TY 数量 | 包装数 |
|---------------|--------------------|----------------------------------|------------|-----|
| E11-1 | 16520-Z100710-00A0 | CONTROL ASSY, THROTTLE | 1 | 1 |
| E11-2 | 16012-Z080110-00A0 | SPRING, THROTTLE VALVE RETURNING | 1 | 1 |
| E11-3 | 16062-Z100110-00A0 | ROD, GOVERNEOR | 1 | 1 |
| E11-4 | 16063-Z100710-00A0 | SPRING, GOVERNOR | 1 | 1 |
| E11-5 | 16070-Z100120-00A0 | SUPPORT SUBASSEMBLY, GOVERNOR | 1 | 1 |
| E11-6 | 90001-0612-01A0 | BOLT | 2 | 1 |
| E11-13 | 90305-0600-31A0 | NUT | 1 | 1 |
| E11-14 | 16072-Z010110-00A0 | BOLT, GOVERNOR SUPPORT | 1 | 1 |

FIG.12 CLEANER, AIR 空滤器(F01)

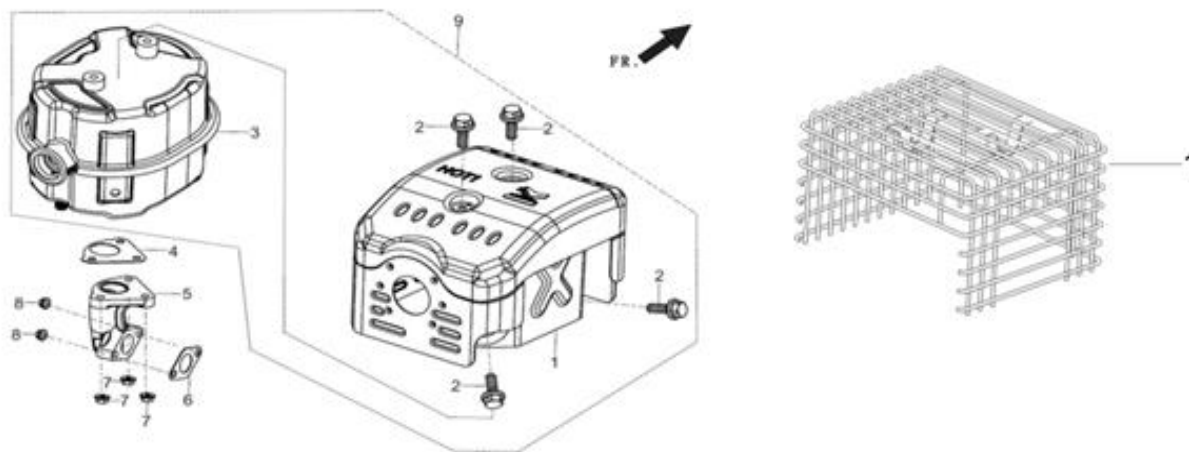
图12: 空滤器 (F01)



| REF.NO. 序号 | PART NO 物料代码 | DESCRIPTION 英文名 | Q'TY 数量 | 包装数 |
|---------------|--------------------|--------------------|------------|-----|
| F01-1 | 90305-0600-31A0 | NUT | 2 | 1 |
| F01-2 | 17100-Z101410-00A0 | CLEANER, AIR | 1 | 1 |
| F01-4 | 90007-0620-A1A0 | BOLT | 1 | 1 |

FIG.13 MUFFLER ASSY.(F02)

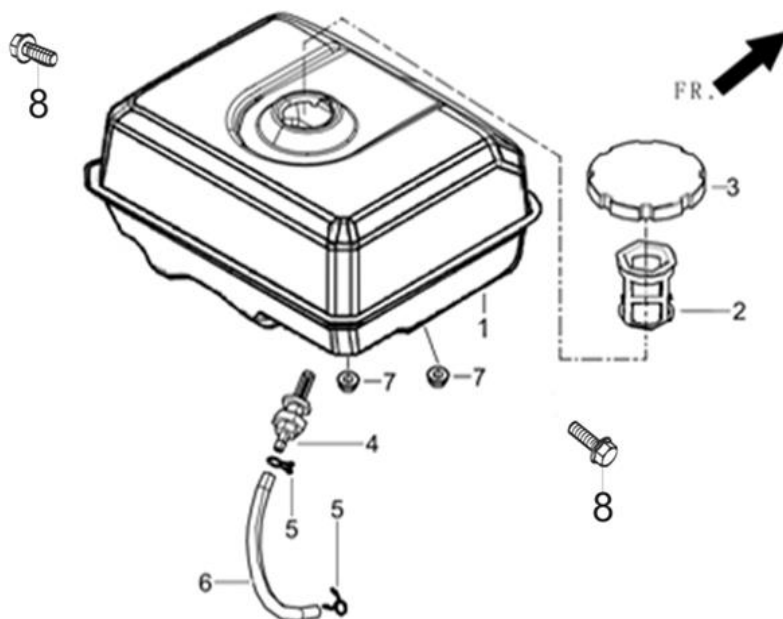
图13: 消声器部件 (F02)



| REF.NO. 序号 | PART NO 物料代码 | DESCRIPTION 英文名 | Q'TY 数量 | 包装数 |
|---------------|--------------------|------------------------|------------|-----|
| F02-1 | 18013-Z100120-00A0 | COVER, MUFFLER OUTER | 1 | 1 |
| F02-4 | 18101-Z080110-00A0 | GASKET, MUFFLER | 1 | 1 |
| F02-5 | 18150-Z080210-00A0 | PIPE, EXHAUST | 1 | 1 |
| F02-6 | 18001-Z190110-00A0 | GASKET, EXHAUST OUTLET | 1 | 1 |
| F02-7 | 90305-0800-31A0 | NUT | 3 | 1 |
| F02-8 | 90305-0800-31A0 | NUT | 2 | 1 |
| F02-9 | 18100-Z100110-00A0 | MUFFLER ASSY. | 1 | 1 |

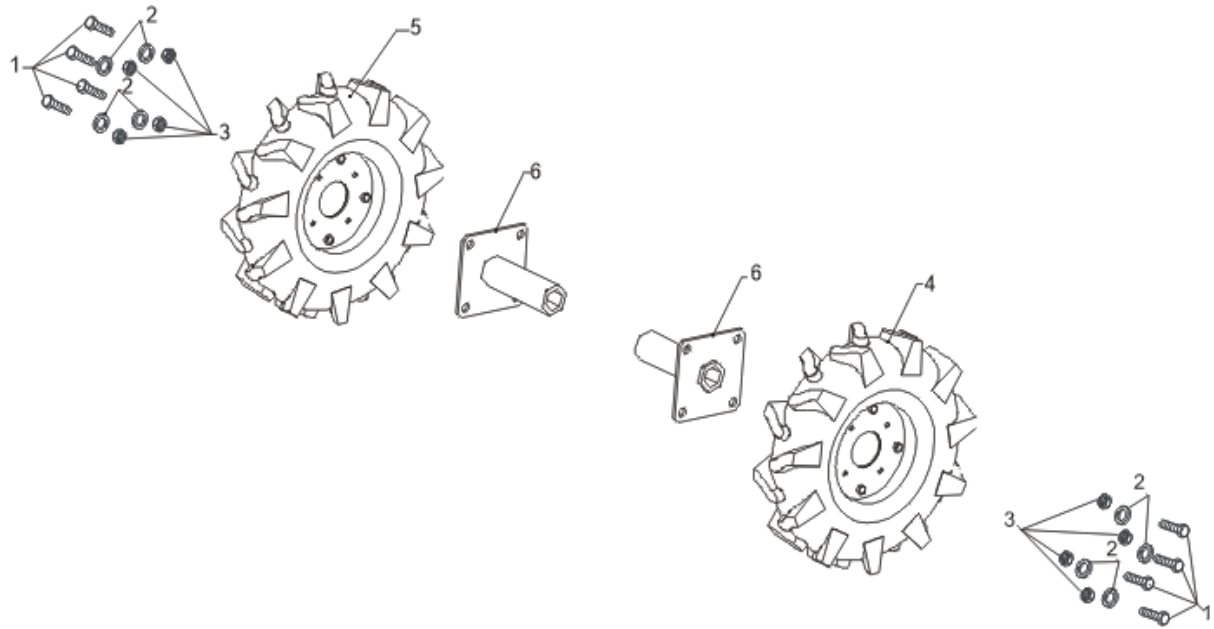
FIG.14 TANK ASSY, FUEL (F03)

图14: 油箱部件 (F03)



| REF.NO. 序号 | PART NO 物料代码 | DESCRIPTION 英文名 | Q'TY 数量 | 包装数 |
|---------------|--------------------|-----------------------------------|------------|-----|
| F03-1 | 16620-Z080410-H3AP | TANK, FUEL | 1 | 1 |
| F03-2 | 16652-Z010610-00A0 | STRAINER, FUEL | 1 | 1 |
| F03-3 | 16730-Z010820-QBA0 | COVER, FUEL TANK | 1 | 1 |
| F03-4 | 16680-Z010110-00A0 | OUTLET SUBASSEMBLY, FUEL TANK OIL | 1 | 1 |
| F03-5 | 90740-Z010210-00A0 | COLLAR | 2 | 1 |
| F03-6 | 90686-Z080910-00A0 | TUBE, FUEL | 1 | 1 |
| F03-7 | 90305-0800-31A0 | NUT | 2 | 1 |
| F03-8 | 90001-0825-01A0 | BOLT | 2 | 1 |

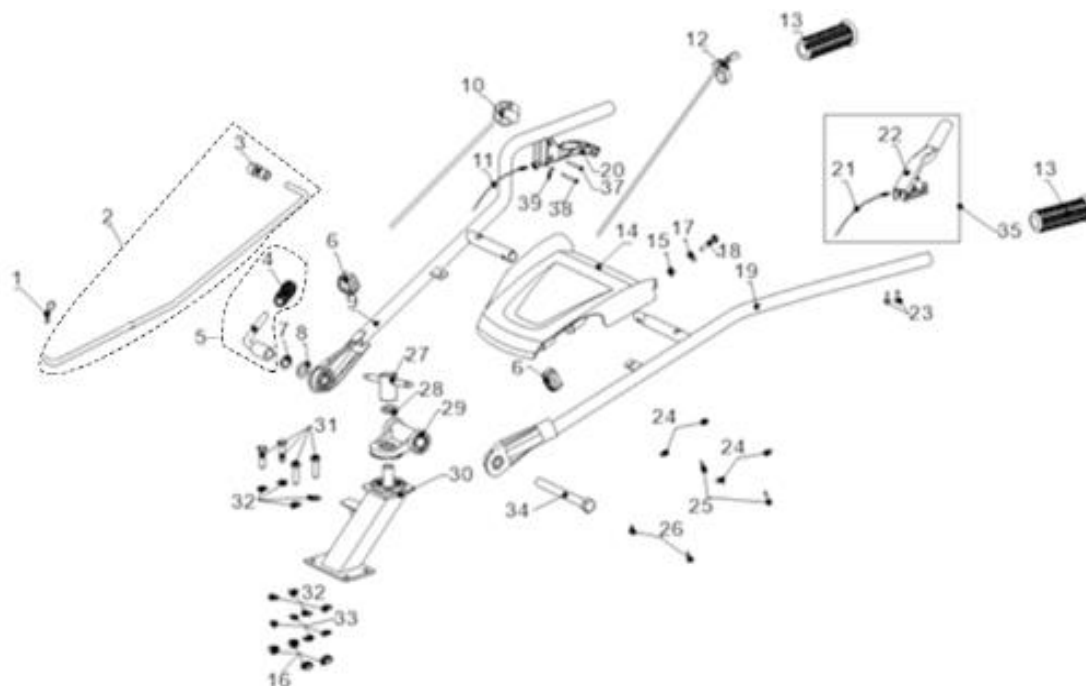
FIG.15 后轮部分(F07)



| REF.NO. 序号 | PART NO 物料代码 | DESCRIPTION 英文名 | Q'TY 数量 | 包装数 |
|---------------|--------------------|---------------------|------------|-----|
| F07-1 | 90005-1025-0108 | | 8 | 1 |
| F07-2 | 90403-1000-0108 | WASHER, FLAT | 8 | 1 |
| F07-3 | 90303-1000-3108 | NUT | 8 | 1 |
| F07-4 | 76008-U070210-H300 | WHEEL, TRANSPORTION | 1 | 1 |
| F07-5 | 76008-U070310-H300 | WHEEL, TRANSPORTION | 1 | 1 |
| F07-6 | 42002-U090110-H300 | SHAFT, REAR WHEEL | 2 | 1 |

FIG.16 手把管部分 (F08)

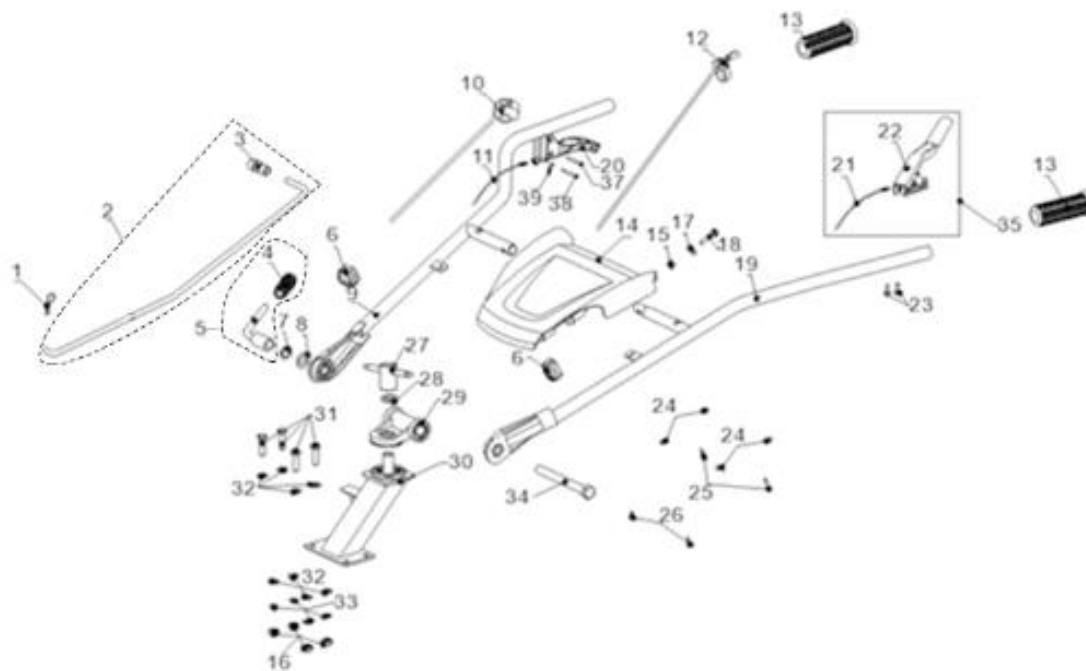
A



| REF.NO. 序号 | PART NO 物料代码 | DESCRIPTION 英文名 | Q'TY 数量 | 包装数 |
|---------------|--------------------|---------------------------------|------------|-----|
| F08-1 | 90583-0238-01 | | 1 | 1 |
| F08-2 | 54205-U090111-QC00 | | 1 | 1 |
| F08-3 | 54101-U080110-0000 | SLEEVE, HANDLE RUBBER | 1 | 1 |
| F08-4 | 54101-U080110-0000 | SLEEVE, HANDLE RUBBER | 1 | 1 |
| F08-5 | 54203-U080111-0000 | | 1 | 1 |
| F08-6 | 90684-U110111-0000 | CLIP | 2 | 1 |
| F08-7 | 90403-1600-0108 | WASHER, FLAT | 1 | 1 |
| F08-8 | 90408-1600-E108 | WASHER, FLAT | 1 | 1 |
| F08-9 | 54110-U230610-GS00 | HANDLE TUBE ASSY | 1 | 1 |
| F08-10 | 35540-U190410-0000 | SWITCH SUBASSEMBLY, STOP ENGINE | 1 | 1 |
| F08-11 | 24006-U190111-0000 | CABLE, REVERSE | 1 | 1 |
| F08-12 | 16550-U190310-0000 | | 1 | 1 |
| F08-13 | 54101-U060110-0000 | SLEEVE, HANDLE RUBBER | 2 | 1 |
| F08-14 | 54125-U060110-Q200 | | 1 | 1 |
| F08-15 | 90325-0800-3108 | | 1 | 1 |
| F08-16 | 90303-1000-3108 | NUT | 4 | 1 |
| F08-17 | 90406-0800-E108 | WASHER, FLAT | 1 | 1 |
| F08-18 | 90005-0835-0108 | | 1 | 1 |
| F08-19 | 54110-U230510-GS00 | HANDLE TUBE ASSY | 1 | 1 |
| F08-20 | 54035-U070410-H300 | | 1 | 1 |
| F08-23 | 90007-0630-A108 | BOLT | 2 | 1 |
| F08-24 | 90406-0500-3108 | WASHER, FLAT | 4 | 1 |

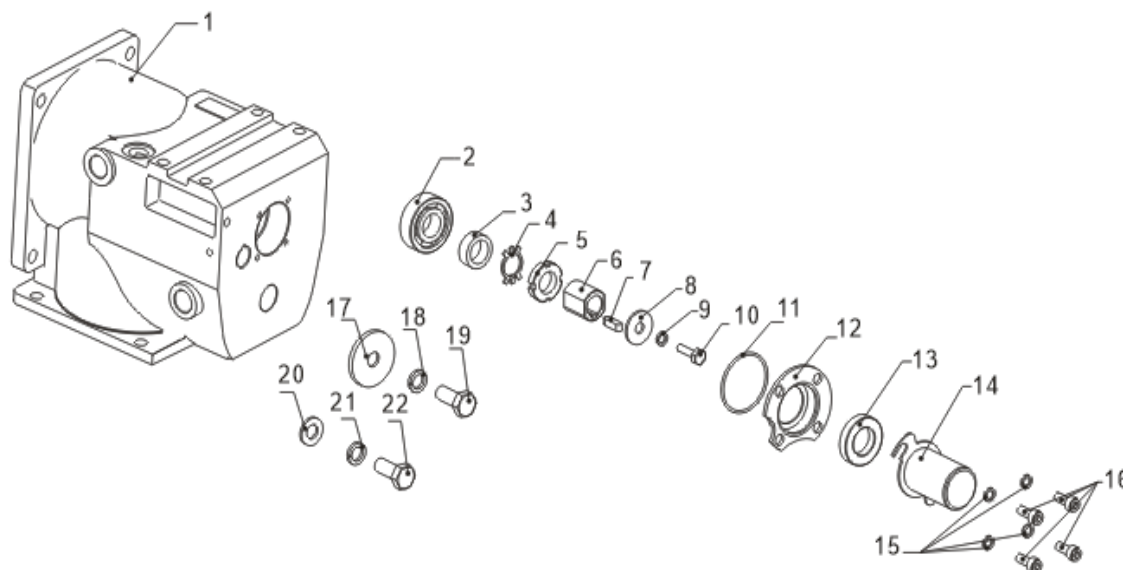
FIG.16 手把管部分 (F08)

B



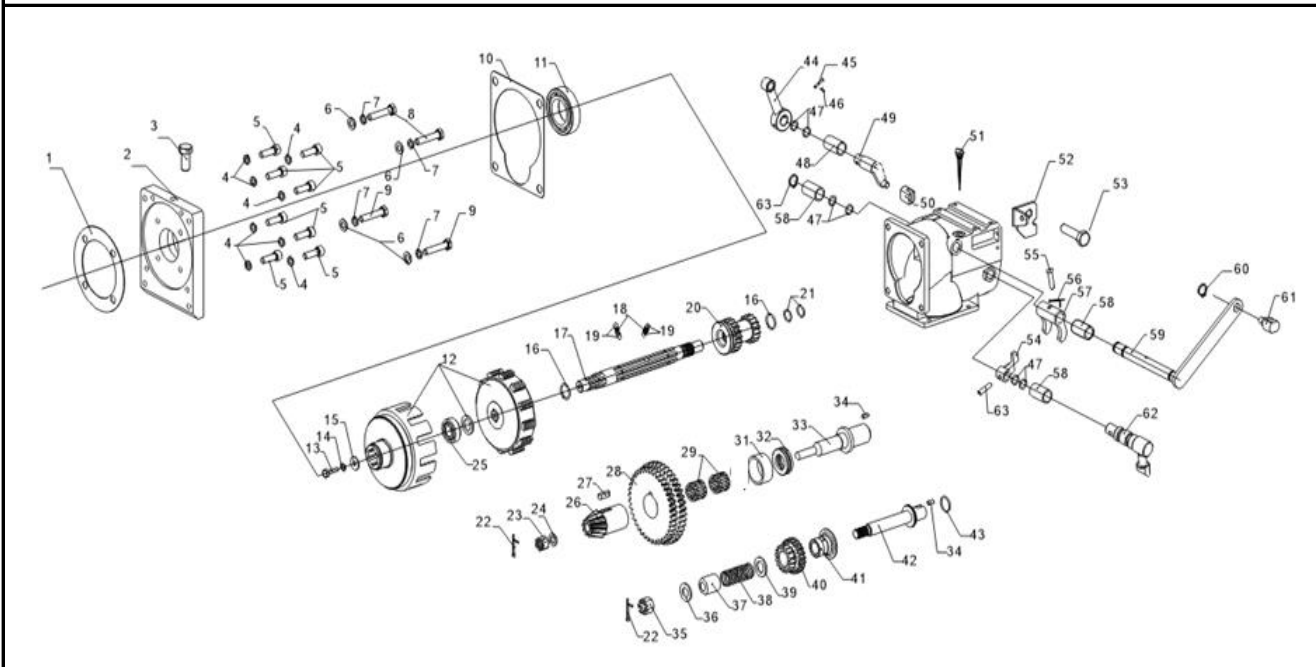
| REF.NO. 序号 | PART NO 物料代码 | DESCRIPTION 英文名 | Q'TY 数量 | 包装数 |
|---------------|--------------------|--------------------|------------|-----|
| F08-25 | 90107-4819-0108 | SCREW | 2 | 1 |
| F08-26 | 90107-4813-0108 | SCREW | 2 | 1 |
| F08-27 | 54203-U290110-0000 | | 1 | 1 |
| F08-28 | 90403-2000-0108 | WASHER, FLAT | 1 | 1 |
| F08-29 | 54206-U220210-GS00 | | 1 | 1 |
| F08-30 | 54200-U090210-GS00 | | 1 | 1 |
| F08-31 | 90005-1035-0108 | | 4 | 1 |
| F08-32 | 90408-1000-E108 | WASHER, FLAT | 8 | 1 |
| F08-33 | 90403-1000-0108 | WASHER, FLAT | 4 | 1 |
| F08-34 | 90004-U070110-01 | | 1 | 1 |
| F08-35 | 24510-U190111-RU00 | | 1 | 1 |
| F08-37 | 90504-0625-0108 | PIN ROLL | 1 | 1 |
| F08-38 | 90504-U080110-0008 | PIN ROLL | 1 | 1 |
| F08-39 | 90501-0220-0108 | PIN | 1 | 1 |

FIG.17 箱体后 (F10)

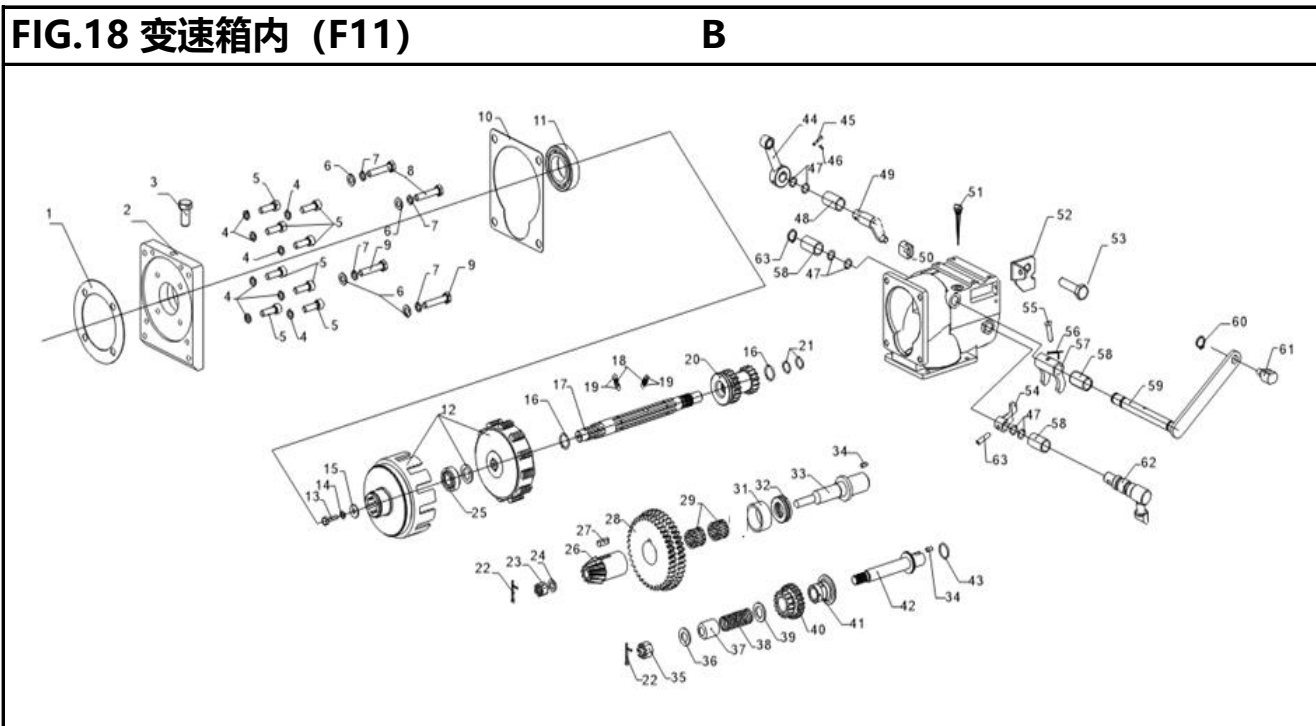


| REF.NO. 序号 | PART NO 物料代码 | DESCRIPTION 英文名 | Q'TY 数量 | 包装数 |
|---------------|--------------------|-------------------------------|------------|-----|
| F10-1 | 76350-U180110-RU00 | BOX SUBASSEMBLY, TRANSMISSION | 1 | 1 |
| F10-2 | 90548-0204-CL | BEARIN, DEEP GROOVE BALL | 1 | 1 |
| F10-3 | 90683-U090310-0000 | BUSH | 1 | 1 |
| F10-4 | 90422-2000-0608 | | 1 | 1 |
| F10-5 | 90317-2000-0608 | | 1 | 1 |
| F10-6 | 23515-U090110-0000 | | 1 | 1 |
| F10-7 | 90521-U080110-0000 | Flat key | 1 | 1 |
| F10-8 | 90401-0800-D108 | | 1 | 1 |
| F10-9 | 90403-0800-Z108 | WASHER, FLAT | 1 | 1 |
| F10-10 | 90005-0816-0108 | | 1 | 1 |
| F10-11 | 90692-U090110-0000 | | 1 | 1 |
| F10-12 | 23514-U090110-0000 | | 1 | 1 |
| F10-13 | 90682-U090110-0000 | SEAL, OIL | 1 | 1 |
| F10-14 | 23513-U090110-0000 | | 1 | 1 |
| F10-15 | 90403-0600-0108 | WASHER, FLAT | 4 | 1 |
| F10-16 | 90005-0616-0108 | | 4 | 1 |
| F10-17 | 90412-U090810-0000 | WASHER, FLAT | 1 | 1 |
| F10-18 | 90403-1200-0108 | WASHER, FLAT | 1 | 1 |
| F10-19 | 90005-1225-0108 | | 1 | 1 |
| F10-20 | 90408-1000-E108 | WASHER, FLAT | 1 | 1 |
| F10-21 | 90403-1000-0108 | WASHER, FLAT | 1 | 1 |
| F10-22 | 90005-1025-0108 | | 1 | 1 |

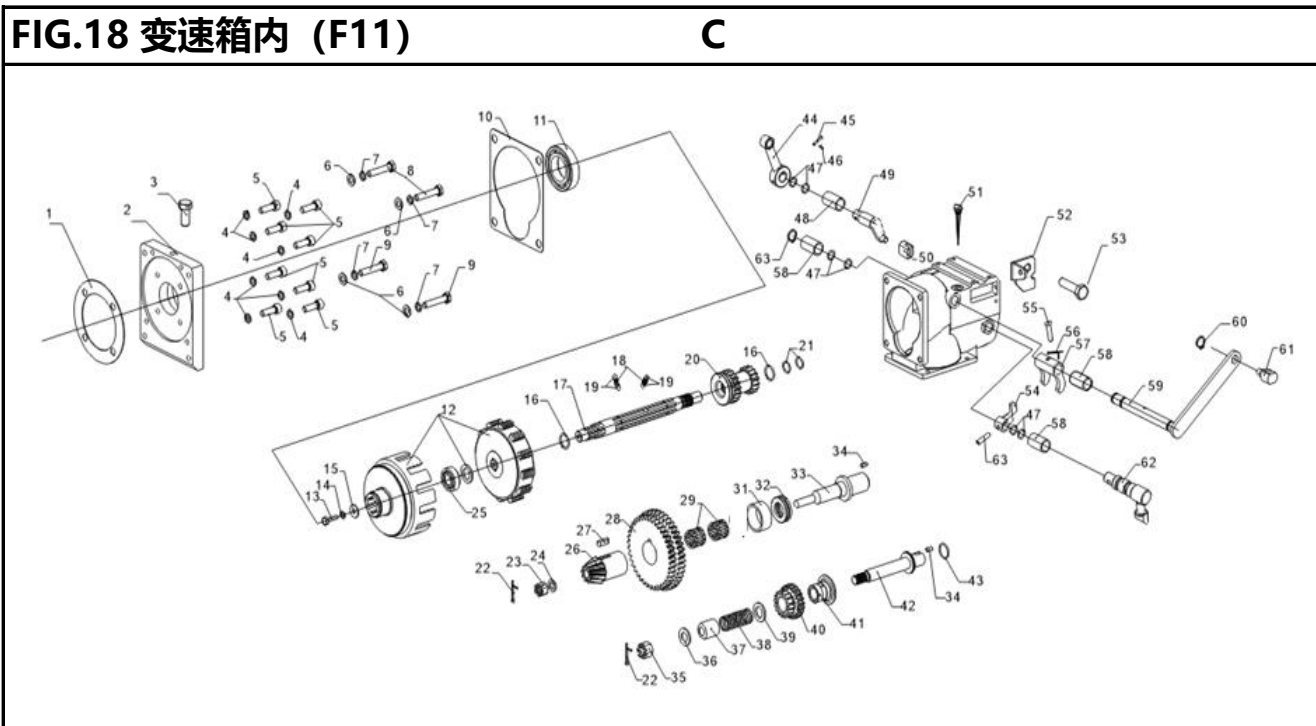
FIG.18 变速箱内 (F11) A



| REF.NO. 序号 | PART NO 物料代码 | DESCRIPTION 英文名 | Q'TY 数量 | 包装数 |
|---------------|--------------------|--------------------------|------------|-----|
| F11-1 | 24307-U090210-0000 | | 1 | 1 |
| F11-2 | 24305-U180110-RU00 | | 1 | 1 |
| F11-3 | 24308-U080110-0000 | | 1 | 1 |
| F11-4 | 90403-0800-Z108 | WASHER, FLAT | 8 | 1 |
| F11-5 | 90102-0825-0108 | | 8 | 1 |
| F11-6 | 90408-1000-E108 | WASHER, FLAT | 4 | 1 |
| F11-7 | 90403-1000-0108 | WASHER, FLAT | 4 | 1 |
| F11-8 | 90005-1040-0108 | | 2 | 1 |
| F11-9 | 90005-1035-0108 | | 2 | 1 |
| F11-10 | 24306-U090210-0000 | | 1 | 1 |
| F11-11 | 90548-6007-CL | BEARIN, DEEP GROOVE BALL | 1 | 1 |
| F11-12 | 22000-U090111-0000 | CLUTCH | 1 | 1 |
| F11-13 | 90005-0816-0108 | | 1 | 1 |
| F11-14 | 90403-0800-Z108 | WASHER, FLAT | 1 | 1 |
| F11-15 | 90406-0800-E108 | WASHER, FLAT | 1 | 1 |
| F11-16 | 90578-2503-0608 | | 2 | 1 |
| F11-17 | 23501-U090110-0000 | AXLE, MAIN | 1 | 1 |
| F11-18 | 24524-U090110-0000 | | 2 | 1 |
| F11-19 | 90543-6300-0008 | BALL, STEEL | 4 | 1 |
| F11-20 | 28301-U090410-0000 | GEAR, DUPLICATE | 1 | 1 |

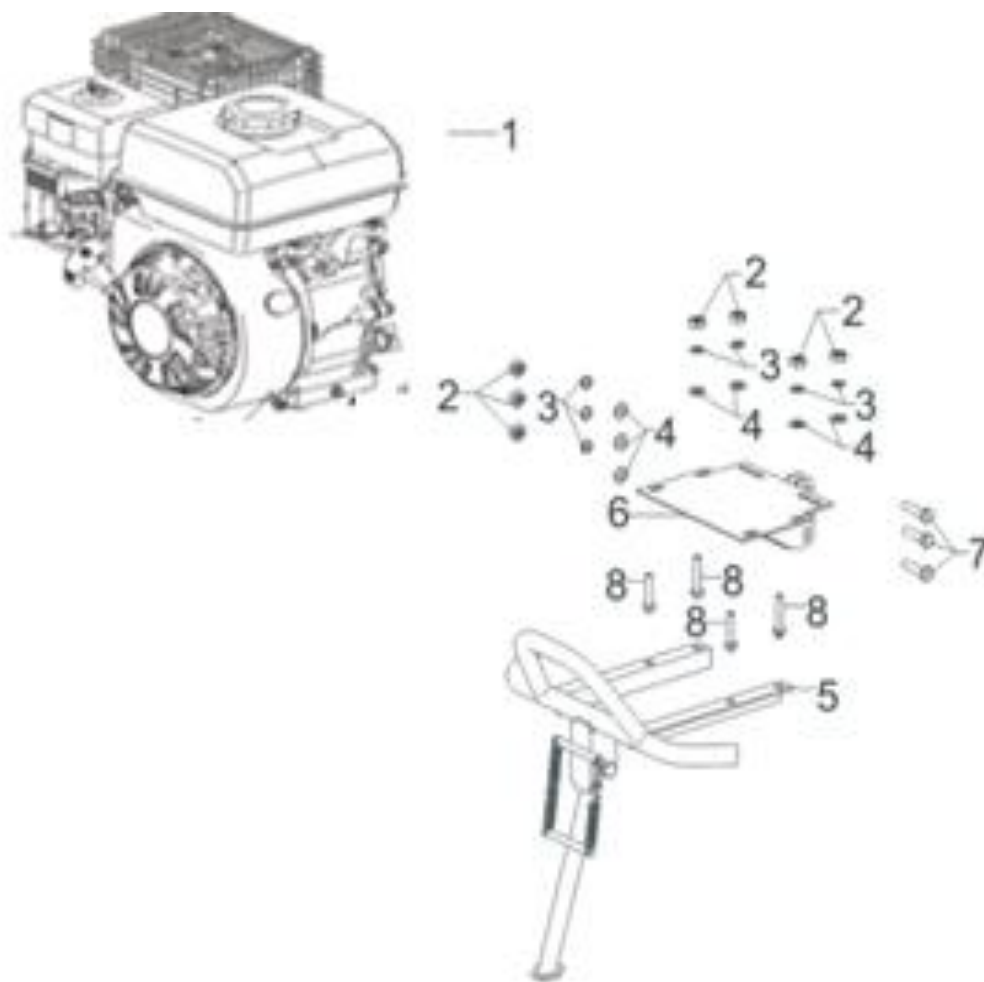


| REF.NO. 序号 | PART NO 物料代码 | DESCRIPTION 英文名 | Q'TY 数量 | 包装数 |
|---------------|--------------------|--------------------------|------------|-----|
| F11-21 | 90692-U090510-0000 | | 2 | 1 |
| F11-22 | 90501-2525-0108 | PIN | 2 | 1 |
| F11-23 | 90307-1000-0108 | | 1 | 1 |
| F11-24 | 90412-U090110-0000 | WASHER, FLAT | 3 | 1 |
| F11-25 | 90548-0202-CL | BEARIN, DEEP GROOVE BALL | 1 | 1 |
| F11-26 | 23609-U090110-0000 | | 1 | 1 |
| F11-27 | 90521-U080110-0000 | | 1 | 1 |
| F11-28 | 28301-U090410-0000 | GEAR, DUPLICATE | 1 | 1 |
| F11-29 | 90565-3301-00 | | 2 | 1 |
| F11-31 | 90683-U090410-0000 | | 1 | 1 |
| F11-32 | 90555-1104-00 | | 1 | 1 |
| F11-33 | 23601-U090210-0000 | COUNTERSHAFT | 1 | 1 |
| F11-34 | 90505-0510-0008 | | 2 | 1 |
| F11-35 | 90307-1200-0108 | | 1 | 1 |
| F11-36 | 90408-1200-E108 | WASHER, FLAT | 1 | 1 |
| F11-37 | 23809-U080110-0000 | | 1 | 1 |
| F11-38 | 23808-U080110-0000 | | 1 | 1 |
| F11-39 | 90412-U090610-0000 | WASHER, FLAT | 1 | 1 |
| F11-40 | 28301-U090310-0000 | GEAR, DUPLICATE | 1 | 1 |
| F11-41 | 23807-U090110-0000 | | 1 | 1 |



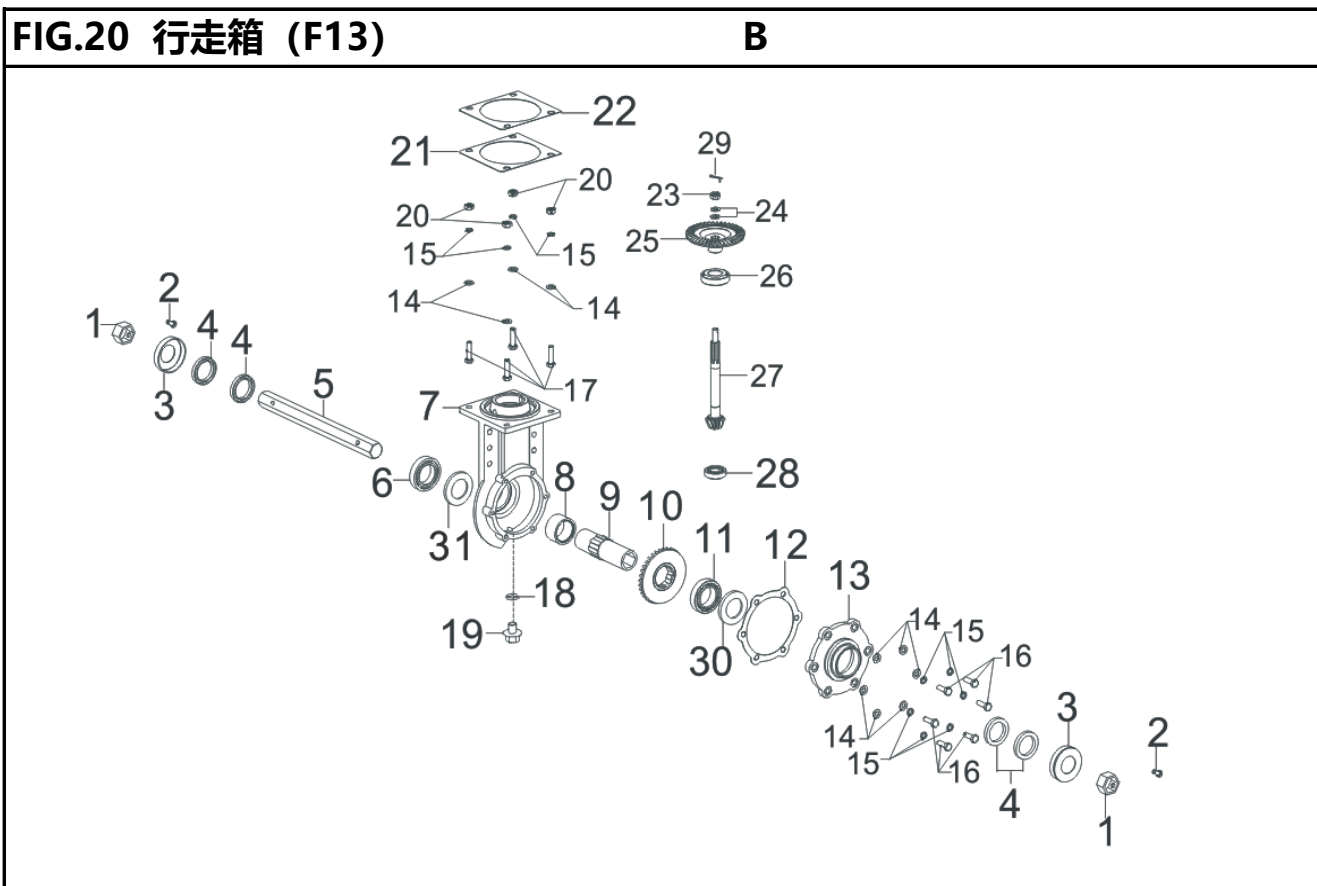
| REF.NO. 序号 | PART NO 物料代码 | DESCRIPTION 英文名 | Q'TY 数量 | 包装数 |
|---------------|--------------------|---------------------------|------------|-----|
| F11-42 | 23806-U090110-0000 | | 1 | 1 |
| F11-43 | 90692-U080610-0000 | | 1 | 1 |
| F11-44 | 23401-U090110-0000 | | 1 | 1 |
| F11-45 | 90504-0640-0108 | | 1 | 1 |
| F11-46 | 90501-0220-0108 | PIN | 1 | 1 |
| F11-47 | 90692-U090410-0000 | | 6 | 1 |
| F11-48 | 90683-U090110-0000 | | 1 | 1 |
| F11-49 | 24420-U090210-0000 | FORK SUBASSEMBLY, SHIFTS | 1 | 1 |
| F11-50 | 24421-U090310-0000 | FORK, SHIFTS | 1 | 1 |
| F11-51 | 15010-U090110-G400 | DIPSTICK SUBASSEMBLY, OIL | 1 | 1 |
| F11-52 | 54037-U090410-0000 | | 1 | 1 |
| F11-53 | 90001-0812-0108 | BOLT | 1 | 1 |
| F11-54 | 24421-U090110-0000 | FORK, SHIFTS | 1 | 1 |
| F11-55 | 90504-0630-0108 | | 1 | 1 |
| F11-56 | 90501-0220-0108 | PIN | 1 | 1 |
| F11-57 | 24421-U090210-0000 | FORK, SHIFTS | 1 | 1 |
| F11-58 | 90683-U090210-0000 | | 3 | 1 |
| F11-59 | 24420-U090310-0000 | FORK SUBASSEMBLY, SHIFTS | 1 | 1 |
| F11-60 | 90573-1600-0608 | | 1 | 1 |
| F11-61 | 54037-U090510-0000 | | 1 | 1 |
| F11-62 | 24420-U090110-0000 | FORK SUBASSEMBLY, SHIFTS | 1 | 1 |
| F11-63 | 90125-U090110-0000 | | 1 | 1 |

FIG.19 动力安装部分 (F12)

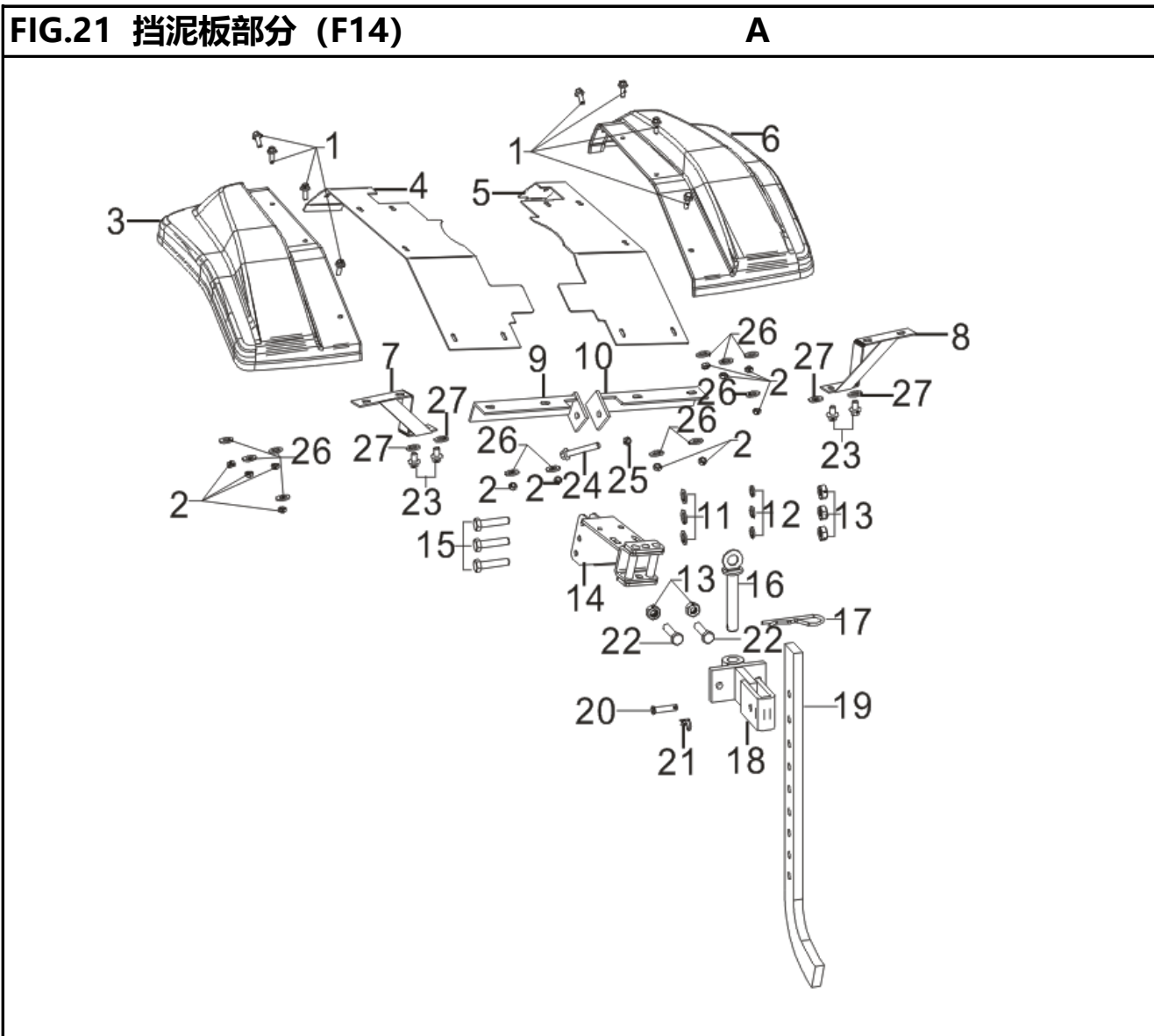


| REF.NO. 序号 | PART NO 物料代码 | DESCRIPTION 英文名 | Q'TY 数量 | 包装数 |
|---------------|--------------------|------------------------|------------|-----|
| F12-1 | R390MR000W6-AGO301 | ENGINE | 1 | 1 |
| F12-2 | 90303-1000-3108 | NUT | 7 | 1 |
| F12-3 | 90403-1000-0108 | WASHER, FLAT | 7 | 1 |
| F12-4 | 90408-1000-E108 | WASHER, FLAT | 7 | 1 |
| F12-5 | 58410-U180310-H300 | GUARD | 1 | 1 |
| F12-6 | 76006-U180111-H300 | SEAT, ENGINE CONNETING | 1 | 1 |
| F12-7 | 90005-1040-0108 | | 3 | 1 |
| F12-8 | 90005-1045-0108 | | 4 | 1 |

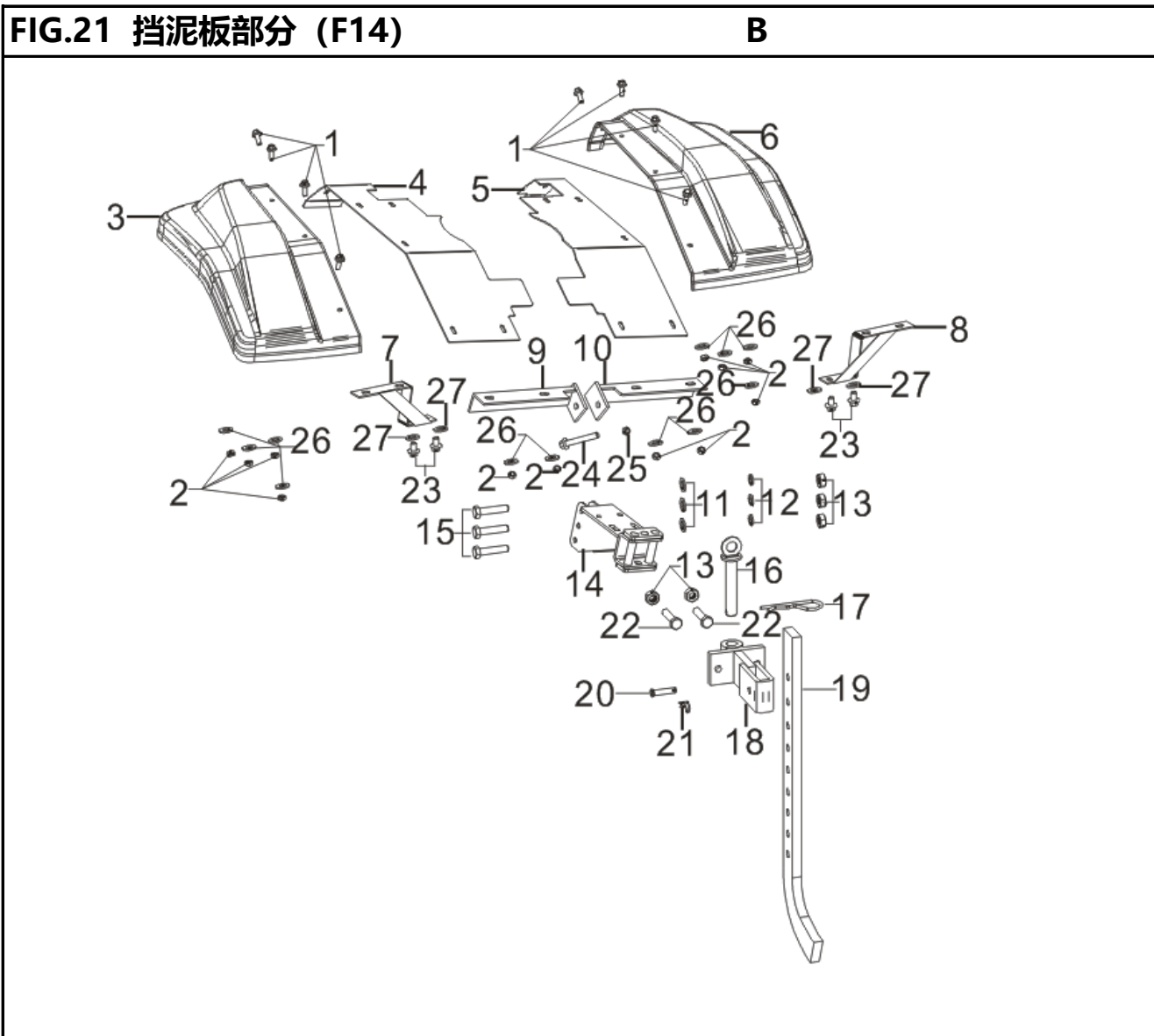
| FIG.20 行走箱 (F13) A | | | | |
|---------------------------|--------------------|--------------------------|------------|-----|
| | | | | |
| REF.NO. 序号 | PART NO 物料代码 | DESCRIPTION 英文名 | Q'TY 数量 | 包装数 |
| F13-1 | 76611-U090110-0000 | | 2 | 1 |
| F13-2 | 90005-0816-0108 | | 2 | 1 |
| F13-3 | 76322-U090110-0000 | | 2 | 1 |
| F13-4 | 90682-U090210-0000 | SEAL, OIL | 4 | 1 |
| F13-5 | 76315-U090110-0000 | | 1 | 1 |
| F13-6 | 90548-0009-CL | BEARIN, DEEP GROOVE BALL | 1 | 1 |
| F13-7 | 76351-U090310-RU00 | BOX BODY, TRANSMISSION | 1 | 1 |
| F13-8 | 76609-U090110-0000 | | 1 | 1 |
| F13-9 | 76608-U090110-0000 | | 1 | 1 |
| F13-10 | 76605-U090110-0000 | | 1 | 1 |
| F13-11 | 90552-2009-CL | | 1 | 1 |
| F13-12 | 76602-U090110-0000 | | 1 | 1 |
| F13-13 | 76301-U090110-RU00 | COVER, TRANSMISSION BOX | 1 | 1 |
| F13-14 | 90408-1000-E1 | WASHER, FLAT | 10 | 1 |
| F13-15 | 90403-1000-01 | WASHER, FLAT | 10 | 1 |



| REF.NO. 序号 | PART NO 物料代码 | DESCRIPTION 英文名 | Q'TY 数量 | 包装数 |
|---------------|--------------------|--------------------|------------|-----|
| F13-16 | 90005-1030-0608 | | 6 | 1 |
| F13-17 | 90005-1040-01 | | 4 | 1 |
| F13-18 | 90692-U080710-0000 | | 1 | 1 |
| F13-19 | 11007-U080110-0000 | BOLT, DRAIN PLUG | 1 | 1 |
| F13-20 | 90303-1000-31 | NUT | 4 | 1 |
| F13-21 | 76606-U090110-0000 | | 按需 | 1 |
| F13-22 | 76606-U090210-0000 | | 按需 | 1 |
| F13-23 | 90334-U090110-0000 | | 1 | 1 |
| F13-24 | 90408-1200-E1 | WASHER, FLAT | 2 | 1 |
| F13-25 | 76604-U090110-0000 | | 1 | 1 |
| F13-26 | 90552-0206-CL | | 1 | 1 |
| F13-27 | 76603-U090110-0000 | | 1 | 1 |
| F13-28 | 90552-0204-CL | | 1 | 1 |
| F13-29 | 90501-2525-01 | PIN | 1 | 1 |
| F13-30 | 90412-U090410-0000 | WASHER, FLAT | 按需 | 1 |
| F13-31 | 90412-U090510-0000 | WASHER, FLAT | 按需 | 1 |

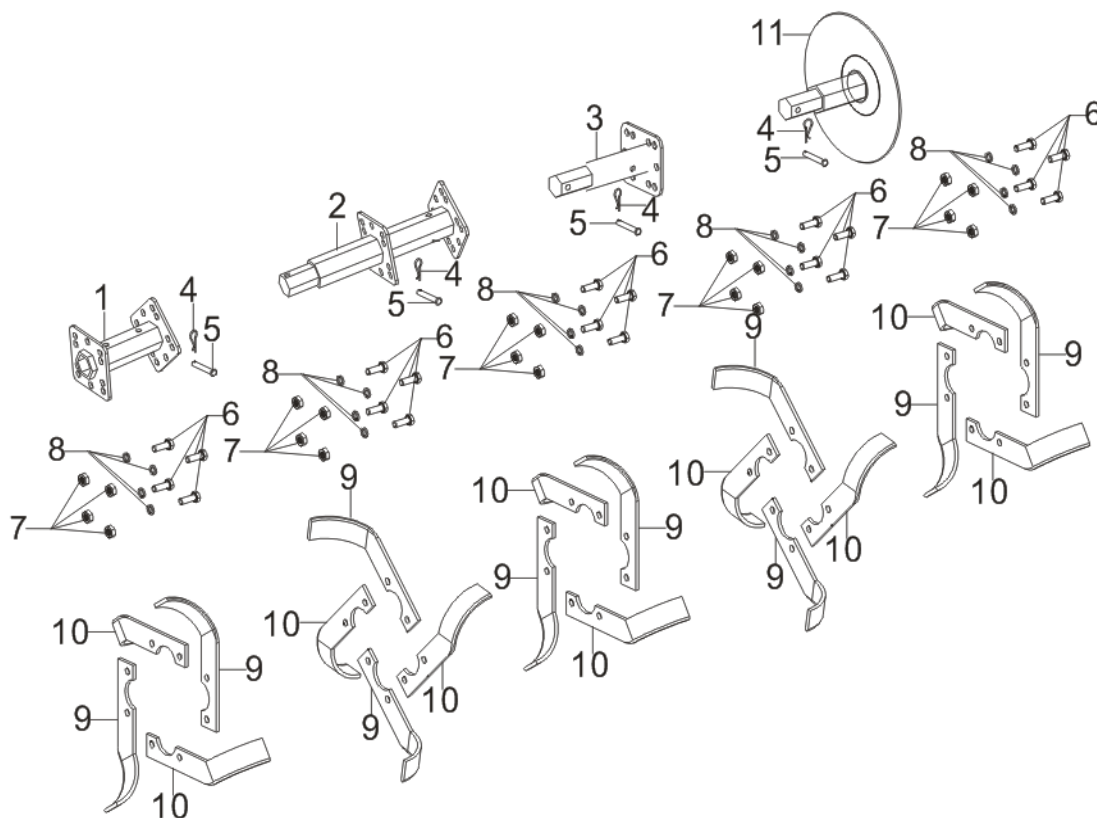


| REF.NO. 序号 | PART NO 物料代码 | DESCRIPTION 英文名 | Q'TY 数量 | 包装数 |
|---------------|--------------------|-----------------------|------------|-----|
| F14-1 | 90007-0616-A108 | BOLT | 12 | 1 |
| F14-2 | 90325-0600-3108 | | 12 | 1 |
| F14-3 | 76007-U240110-GS00 | FENDER, MINI-TILLER | 1 | 1 |
| F14-4 | 76007-U240310-GS00 | FENDER, MINI-TILLER | 1 | 1 |
| F14-5 | 76007-U240410-GS00 | FENDER, MINI-TILLER | 1 | 1 |
| F14-6 | 76007-U240210-GS00 | FENDER, MINI-TILLER | 1 | 1 |
| F14-7 | 80009-U240110-H300 | SUPPORT, FRONT FENDER | 1 | 1 |
| F14-8 | 80009-U240210-H300 | SUPPORT, FRONT FENDER | 1 | 1 |
| F14-9 | 82002-U240210-H300 | SUPPORT, REAR FENDER | 1 | 1 |
| F14-10 | 82002-U240310-H300 | SUPPORT, REAR FENDER | 2 | 1 |
| F14-11 | 90408-1000-E108 | WASHER, FLAT | 3 | 1 |
| F14-12 | 90403-1000-0108 | WASHER, FLAT | 3 | 1 |
| F14-13 | 90303-1000-3108 | NUT | 5 | 1 |



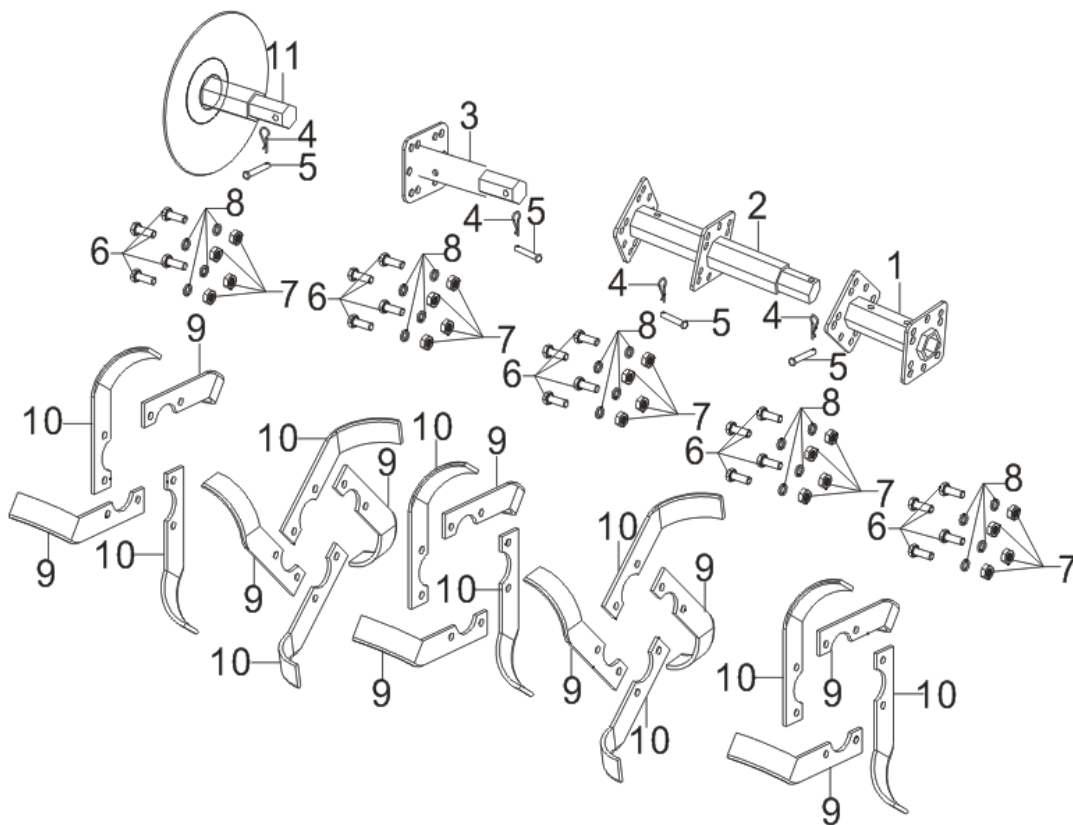
| REF.NO. 序号 | PART NO 物料代码 | DESCRIPTION 英文名 | Q'TY 数量 | 包装数 |
|---------------|--------------------|--------------------|------------|-----|
| F14-14 | 76025-U240210-H300 | | 1 | 1 |
| F14-15 | 90005-1050-0108 | | 3 | 1 |
| F14-16 | 90504-U090210-0000 | PIN ROLL | 1 | 1 |
| F14-17 | 90583-3581-01 | | 1 | 1 |
| F14-18 | 76024-U080211-H300 | | 1 | 1 |
| F14-19 | 76016-U080110-H300 | | 1 | 1 |
| F14-20 | 90504-0840-0108 | PIN ROLL | 1 | 1 |
| F14-21 | 90583-0238-01 | | 1 | 1 |
| F14-22 | 90005-1040-0108 | | 2 | 1 |
| F14-23 | 90001-0816-0108 | BOLT | 4 | 1 |
| F14-24 | 90001-0855-0108 | BOLT | 1 | 1 |
| F14-25 | 90305-Z010110-0008 | NUT | 1 | 1 |
| F14-26 | 90406-0600-E108 | | 12 | 1 |
| F14-27 | 90406-0800-E108 | WASHER, FLAT | 4 | 1 |

FIG.23 左耕刀 (F17)



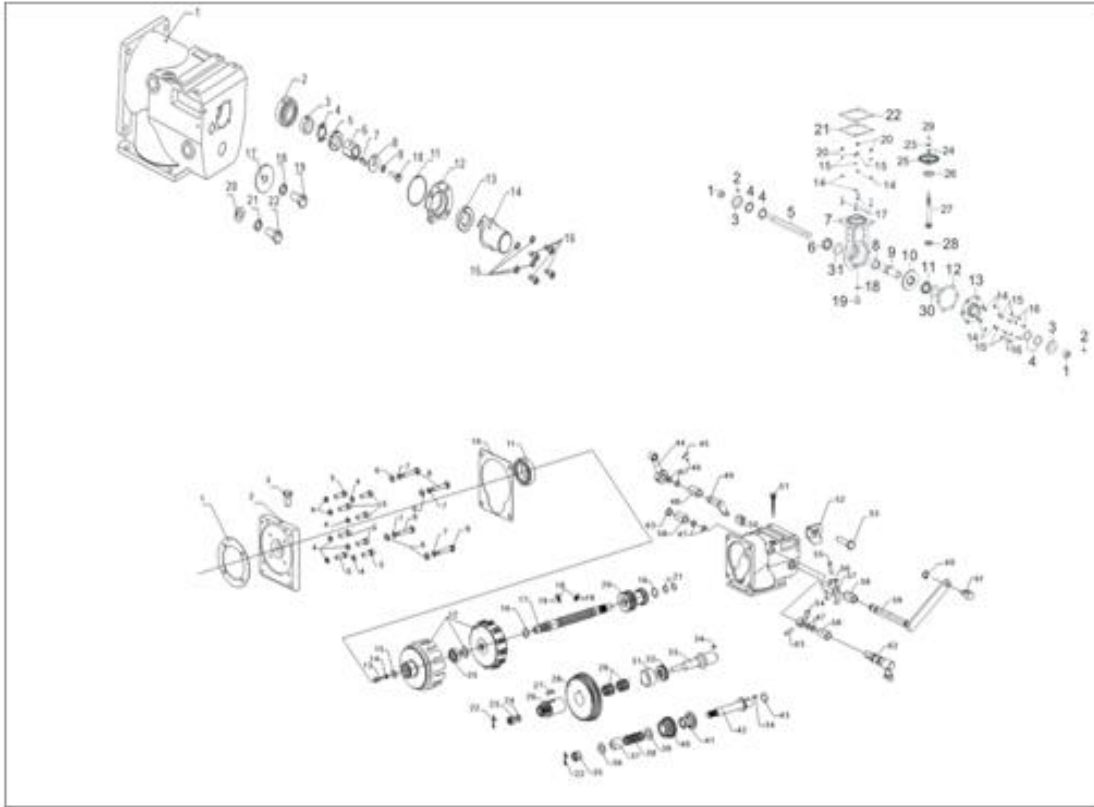
| REF.NO. 序号 | PART NO 物料代码 | DESCRIPTION 英文名 | Q'TY 数量 | 包装数 |
|---------------|--------------------|-------------------------------------|------------|-----|
| F17-1 | 76725-U500510-H300 | | 1 | 1 |
| F17-2 | 76725-U500610-H300 | | 1 | 1 |
| F17-3 | 76725-U500210-H300 | | 1 | 1 |
| F17-4 | 90504-0850-0108 | PIN ROLL | 6 | 1 |
| F17-5 | 90583-0238-01 | | 6 | 1 |
| F17-6 | 90005-1030-0608 | | 24 | 1 |
| F17-7 | 90303-1000-3608 | NUT | 20 | 1 |
| F17-8 | 90403-1000-0608 | WASHER, FLAT | 20 | 1 |
| F17-9 | 76721-U070410-H300 | | 12 | 1 |
| F17-10 | 76721-U070310-H300 | | 12 | 1 |
| F17-11 | 76723-U090110-H300 | | 1 | 1 |
| | 76700-U091610-H300 | DEVICE SUBASSEMBLY, REVOLVE TILLING | 1 | 1 |

FIG.24 右耕刀 (F18)



| REF.NO. 序号 | PART NO 物料代码 | DESCRIPTION 英文名 | Q'TY 数量 | 包装数 |
|---------------|--------------------|-------------------------------------|------------|-----|
| F18-1 | 76725-U500510-H300 | | 1 | 1 |
| F18-2 | 76725-U500610-H300 | | 1 | 1 |
| F18-3 | 76725-U500210-H300 | | 1 | 1 |
| F18-4 | 90504-0850-0108 | PIN ROLL | 4 | 1 |
| F18-5 | 90583-0238-01 | | 4 | 1 |
| F18-6 | 90005-1030-0608 | | 20 | 1 |
| F18-7 | 90303-1000-3608 | NUT | 20 | 1 |
| F18-8 | 90403-1000-0608 | WASHER, FLAT | 20 | 1 |
| F18-9 | 76721-U070410-H300 | | 12 | 1 |
| F18-10 | 76721-U070310-H300 | | 12 | 1 |
| F18-11 | 76723-U090110-H300 | | 1 | 1 |
| | 76700-U091710-H300 | DEVICE SUBASSEMBLY, REVOLVE TILLING | 1 | 1 |

FIG.24 传动箱体组合 (F19)



| REF.NO. 序号 | PART NO 物料代码 | DESCRIPTION 英文名 | Q'TY 数量 | 包装数 |
|---------------|--------------------|-------------------------------|------------|-----|
| F19-1 | 76350-U180110-RU00 | BOX SUBASSEMBLY, TRANSMISSION | 1 | 1 |

