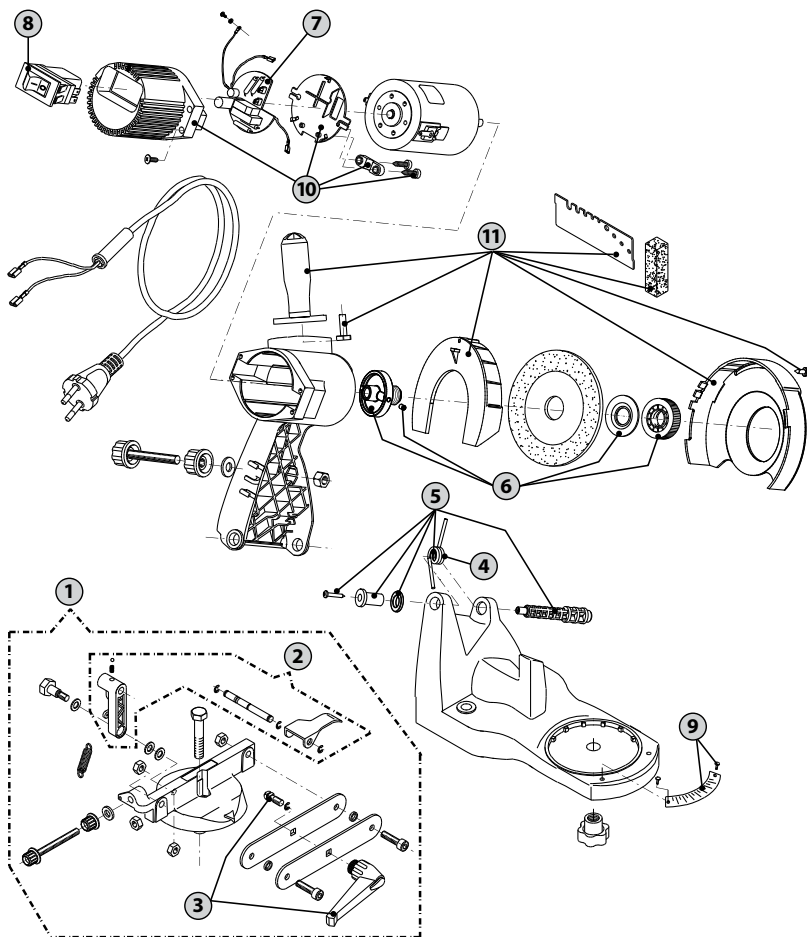


EASYGrinder

electric chain grinder 120 V - 230 V



► SPARE PARTS



P/N	DESCRIPTION	ORDER MULTIPLES OF:
1	1190014 Complete vise	1 pc
2	K00200361 Chain stop retrofit kit	1 pc
3	K00200362 Vise position/tension adjustment knob	1 pc
4	1185123 Return spring, grind lever	1 pc
5	K00200304 Spring arm return set	1 pc
6	1190046 Aluminium arbor retrofit kit	1 pc
7	1190107 120V-230V electric cardboard	1 pc
8	K00200157 230V switch	1 pc
	K00500048 120V switch	1 pc
9	1190050 Vise screws and plate kit	1 pc
10	1190128 Cover and holding plate kit	1 pc
11	K00200358 Equipment kit	1 pc

PACKAGING:
Nylon Bag

